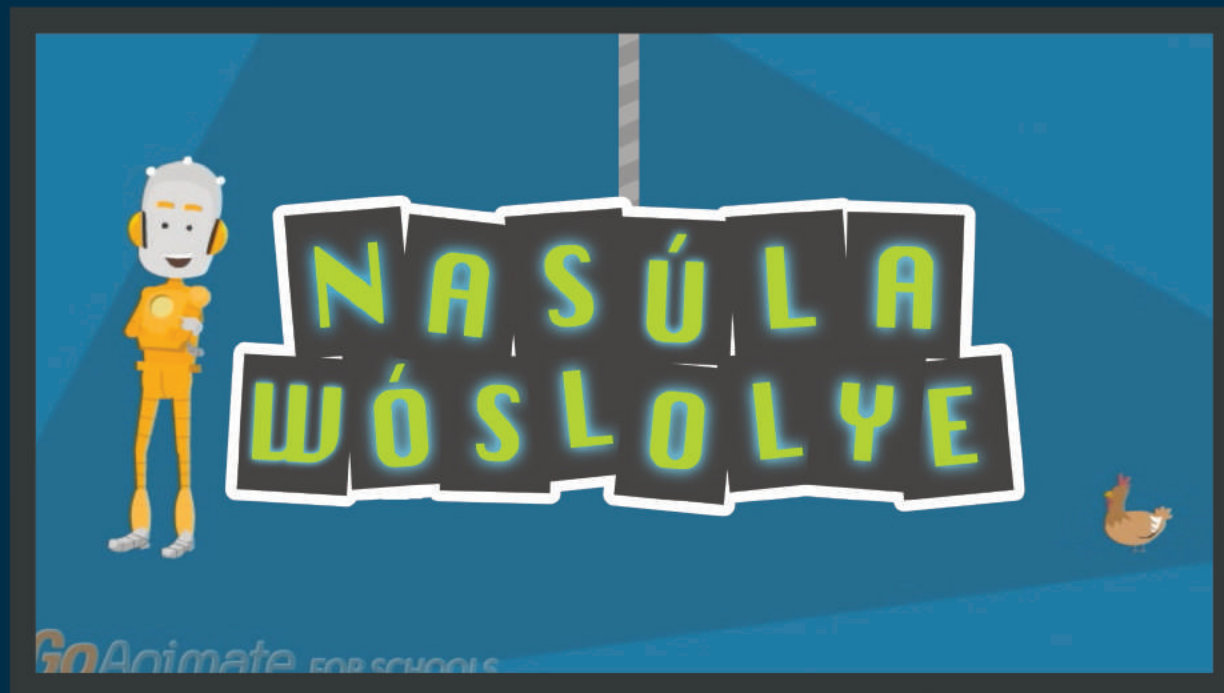


**NASÚLA
WÓSLOLYE**

Wamníomni Třánka

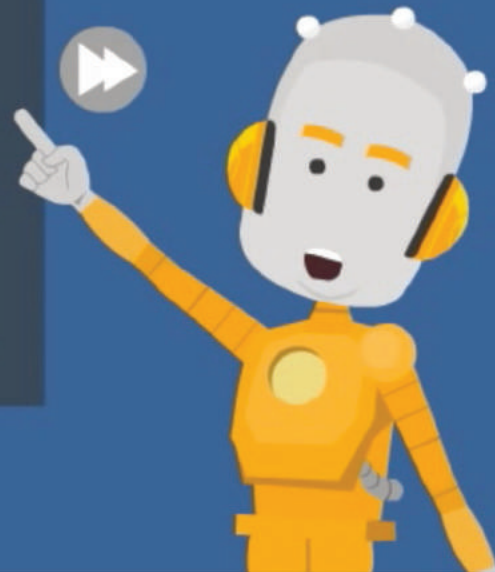
GoAnimate FOR SCHOOLS



Wamníomni Thánka



Háu! Mas'wíchaša hemácha na Nasúla emáçiyape ló.



GoAnimate FOR SCHOOLS

Na takúku wamníomni thánka ečíyatanhan očíčiyakapi wačíh.



GoAnimate FOR SCHOOLS

Wamníomni thánka kiňhán maňpíya-taňhaň khútakiya makhá iyágleya hihúňni
na šna líglila kahómnimniyaň hé.



GoAnimate FOR SCHOOLS



GoAnimate FOR SCHOOLS

Na makhá kiη théhanl ópta yá okíhi.

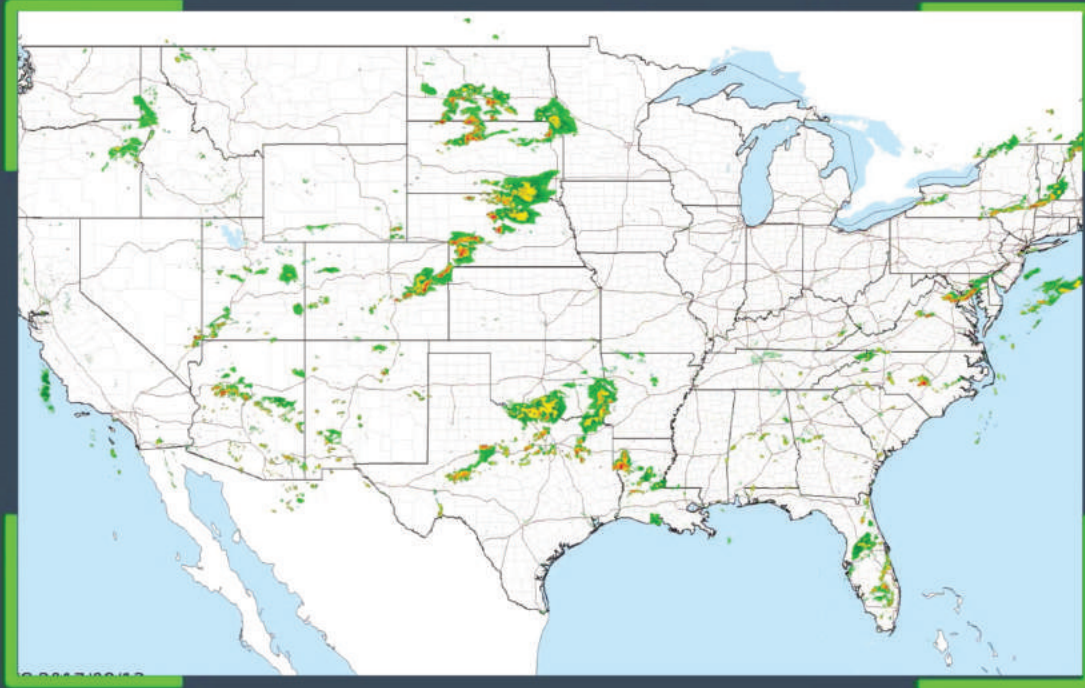


Waŋží mní ópta yé háŋtaŋš, “mní-wamníomni thánka” eyápe ló.



GoAnimate FOR SCHOOLS

Třaté ayáta wičháša na wínyan kiŋ iwákhita héčha úŋpi,
na héčhel wamníomni thánka kiŋ ablézapi na šna otháphapi.



GoAnimate FOR SCHOOLS

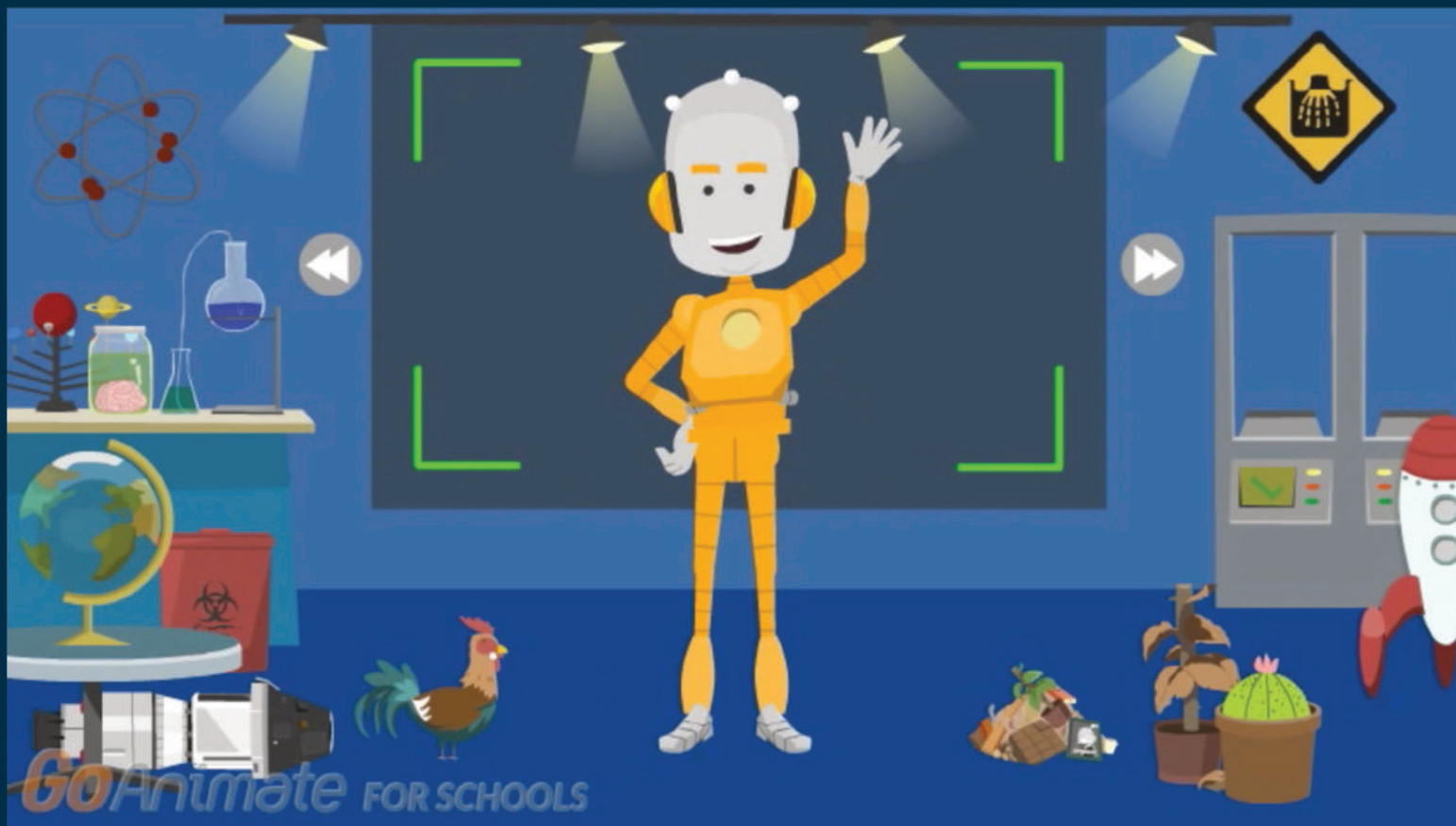


GoAnimate FOR SCHOOLS

Wamníomni thánka wanží nikhíyela ú séhíngle kinqhán,
ináñni thihúkhtakiya iyáyapi na yukšála naíč'íziñ yanká po.



Hé kiksúye-phičá yeló!
Nasúla kiŋ waná namáhomni!



Hó čha wamniomni thánka akhíta po. Na ečháš kúpi nahán akhé
Nasúla Wóslolye eyápi wanží yunáyečhičhíyapi kte! Nasúla miyé yeló.