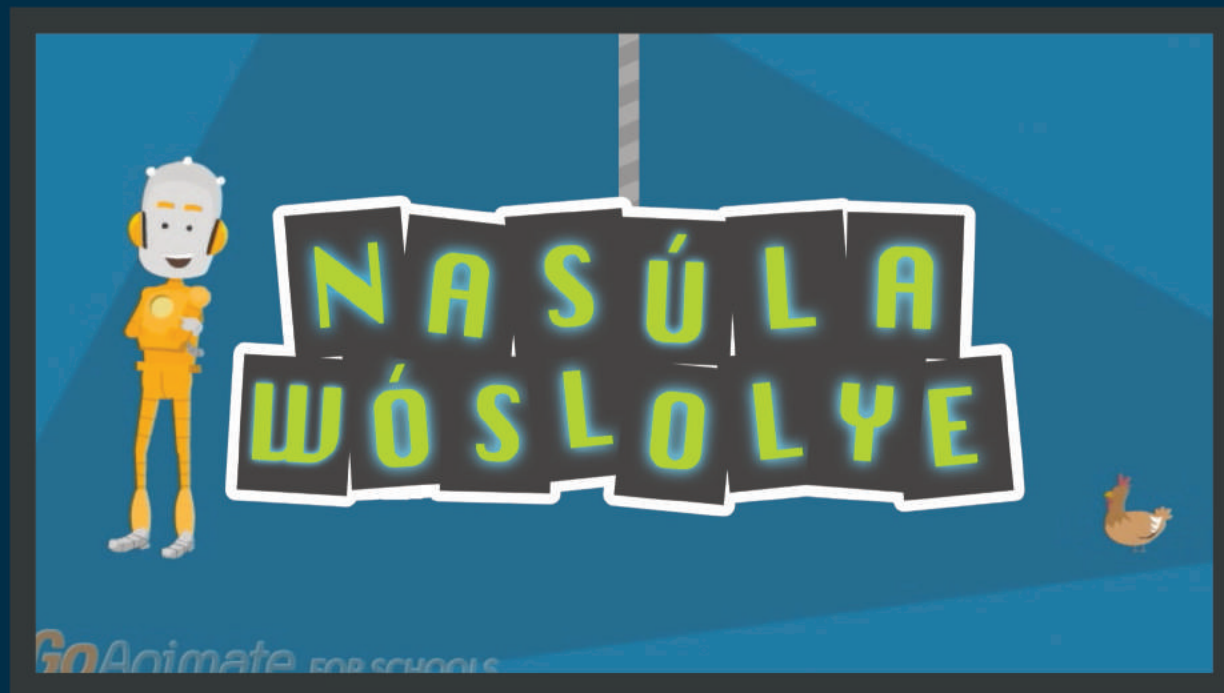


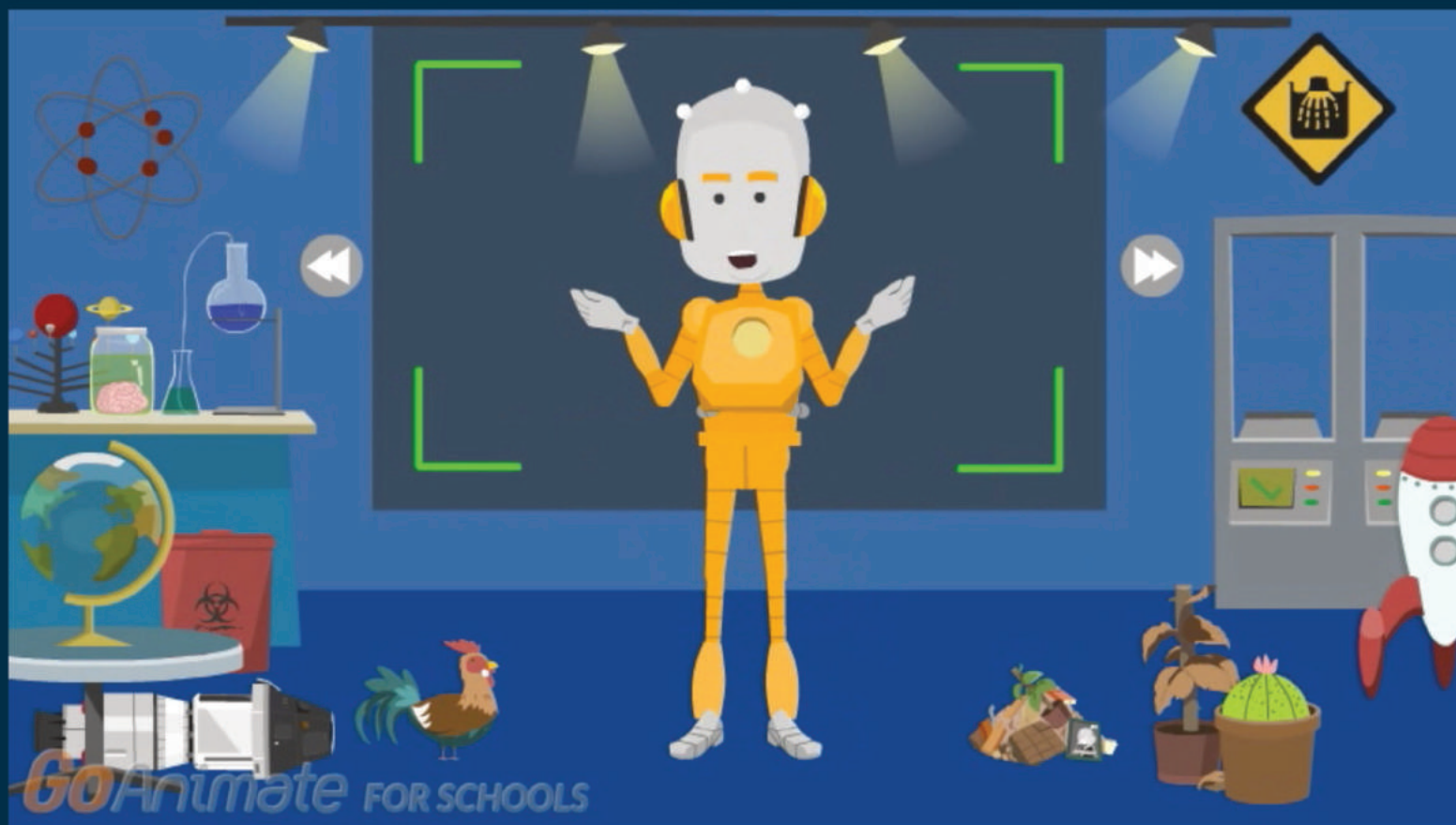
NASÚLA
WÓSLOLYE

Kimímela

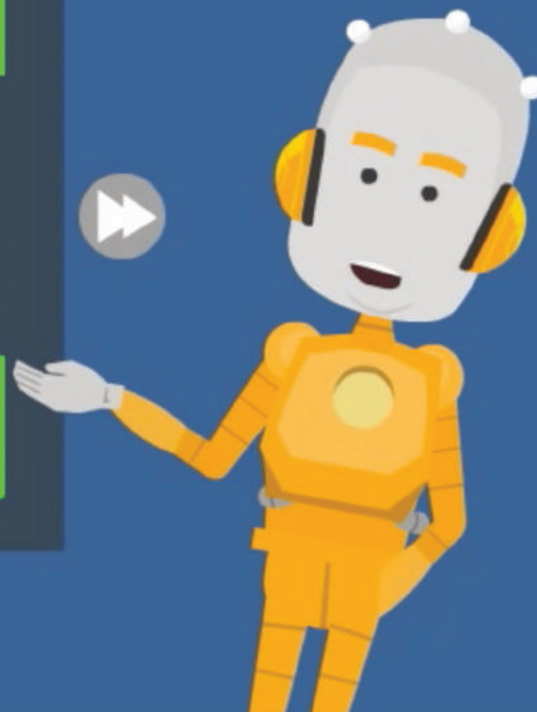
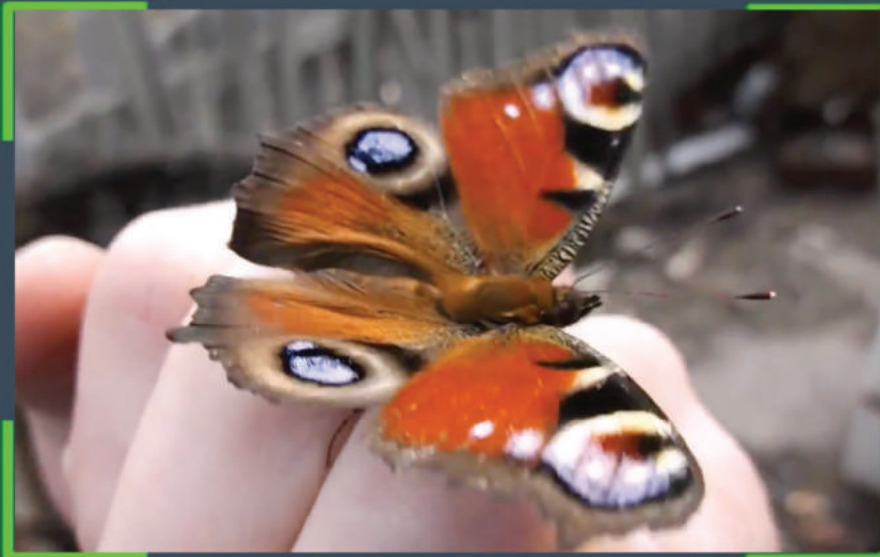
GoAnimate FOR SCHOOLS



Kimímela



Háu! Mas'wíchaša hemácha na Nasúla emáçiyape ló.



GoAnimate FOR SCHOOLS

Na kimímela ečhíyatanhan takúku očíčiyakapi wačhín.



GoAnimate FOR SCHOOLS

Kimímela kinqhán wablúška héčhapi na wígmunke s'e oówa ótapi.



*Go*Animate FOR SCHOOLS



GoAnimate FOR SCHOOLS

Sí uᅇ wóyute yul-íyuthapi okíhipi.



GoAnimate FOR SCHOOLS



GoAnimate FOR SCHOOLS

Eyášna wanáhča hanpí yatkáŋpi.



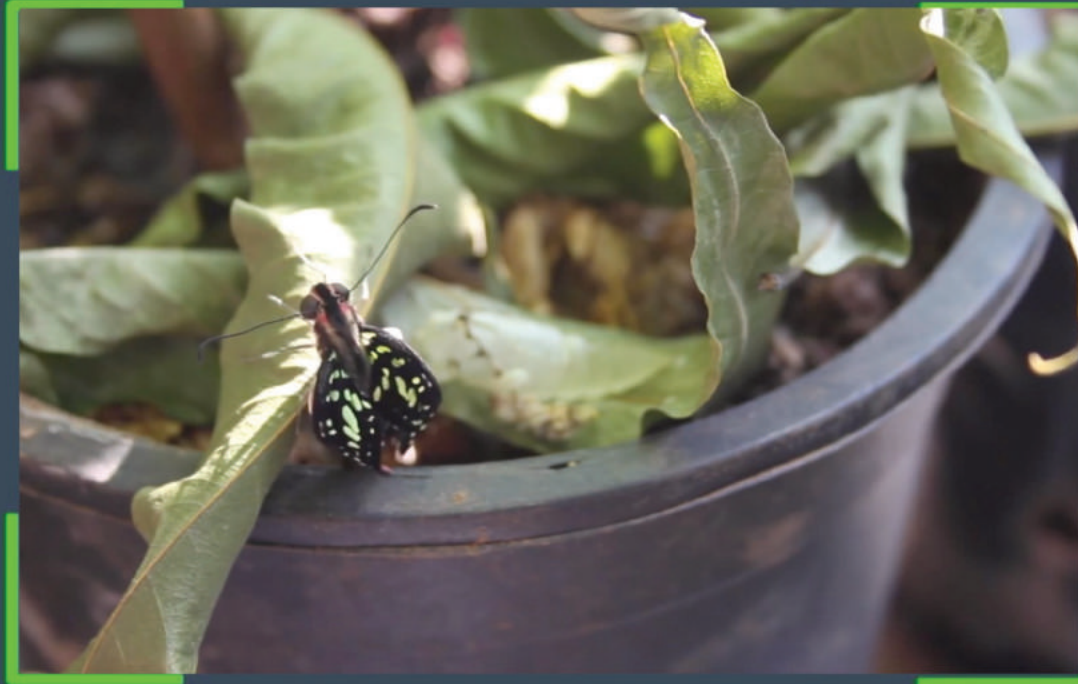
*Go*Animate FOR SCHOOLS

Kimímela kin iyúha waglúla héchapi tkhá.



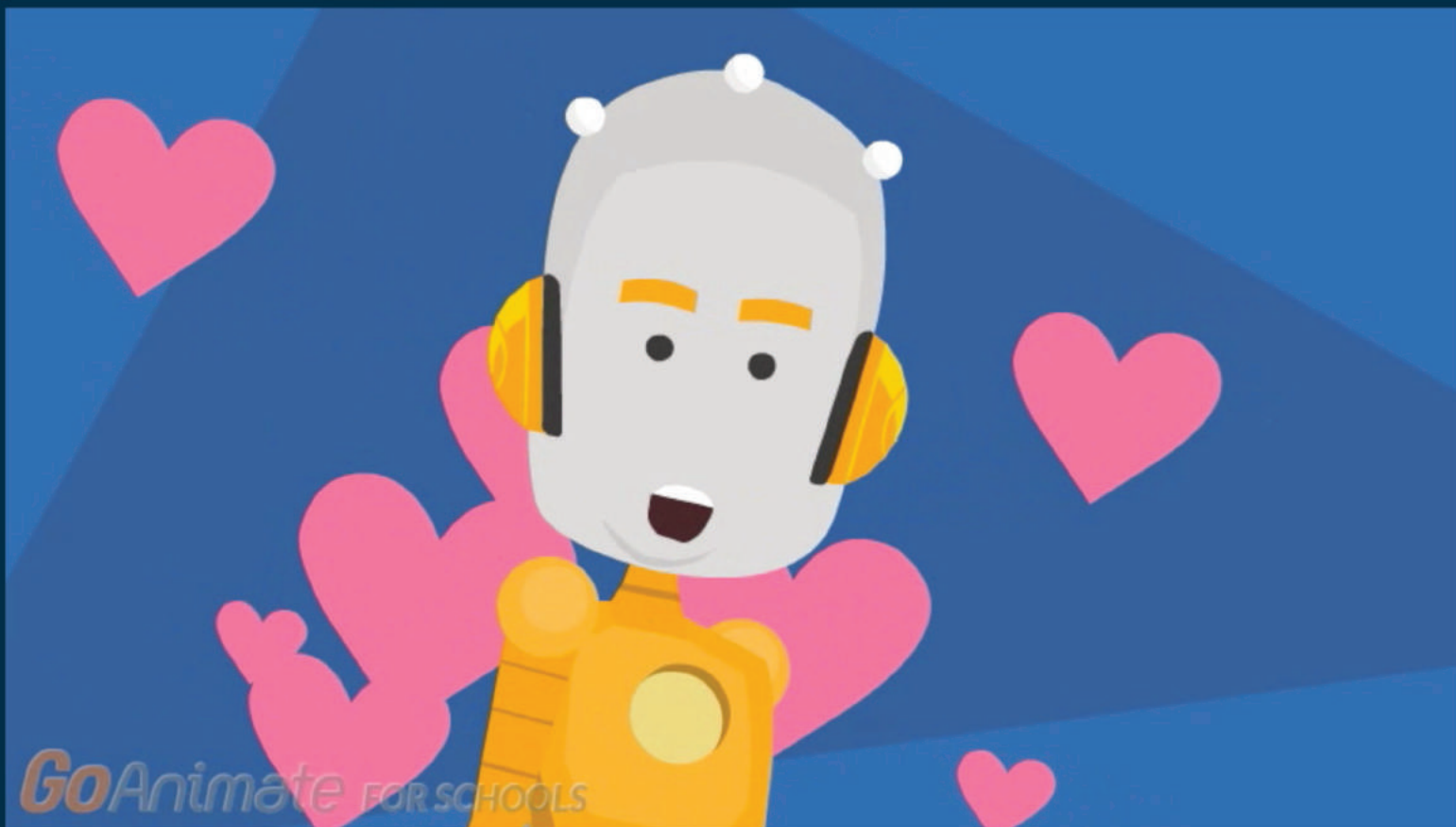
*Go*Animate FOR SCHOOLS

Waglúla kíj lená wítka etánhan íkpákpí na ečhél wičhátħunpi.



GoAnimate FOR SCHOOLS

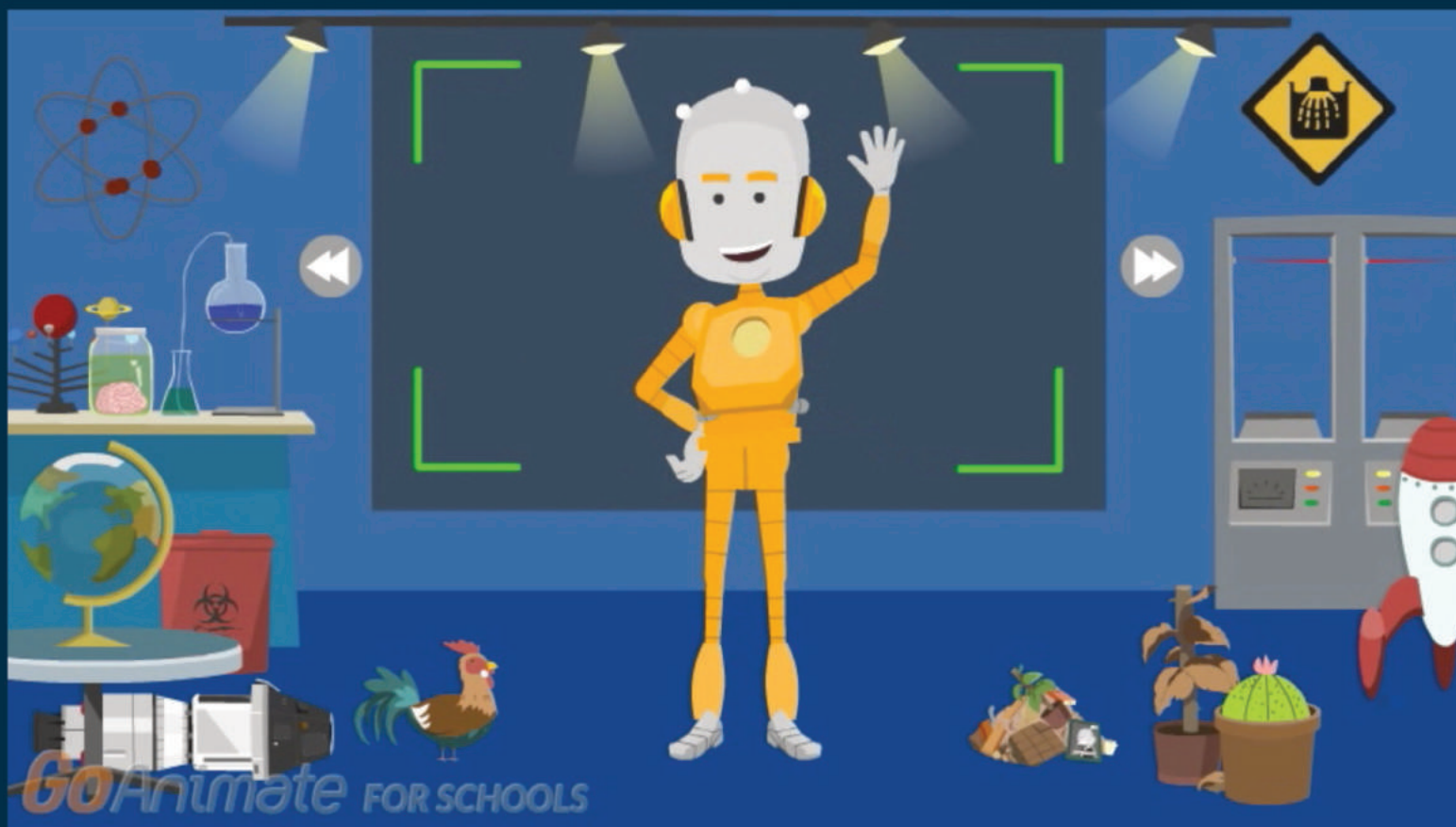
Icháǵapi yunǵhán wamníyomni aǵluwipi na owátohan yunǵhán
kimímela kaǵyá glinápǵhapi!



Kimímela kin ihánkeya wablúška ówanyang wašté héčhapi!



Yathí kin ilázata húnĥ óúnyanpi séče.



Wóle yápi na hehánl kúpi na akhé Nasúla Wóslolye eyápi húngh
yunáyečhičhiyapi kte ló.