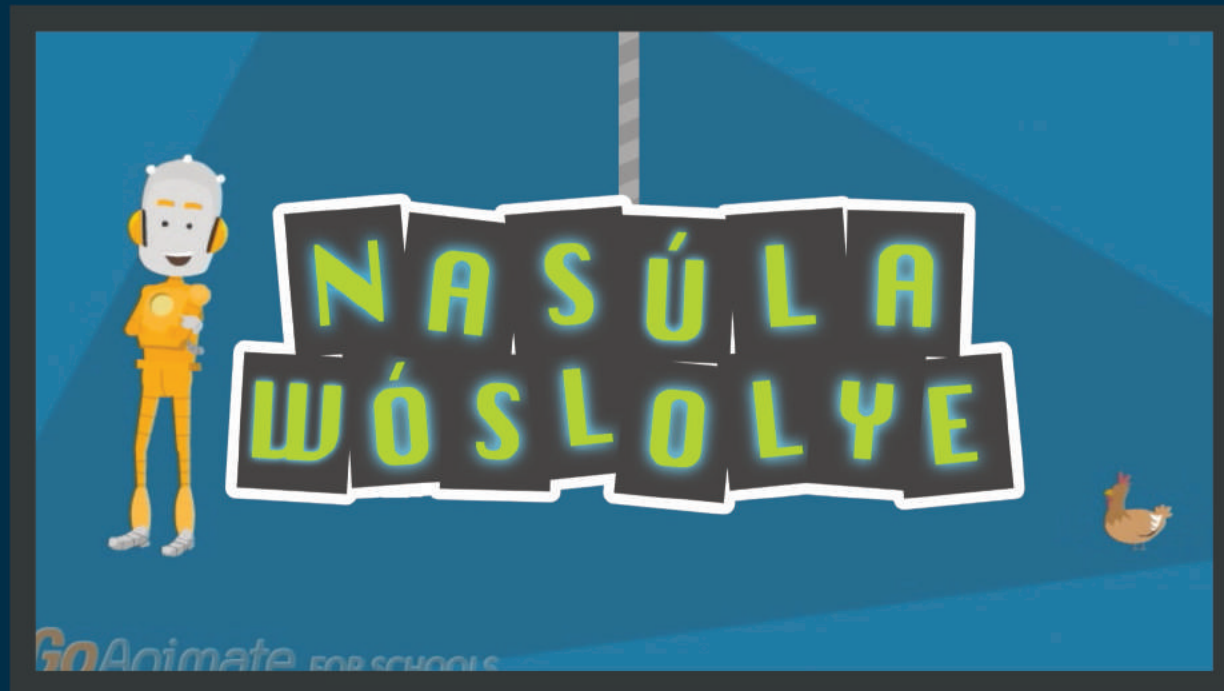


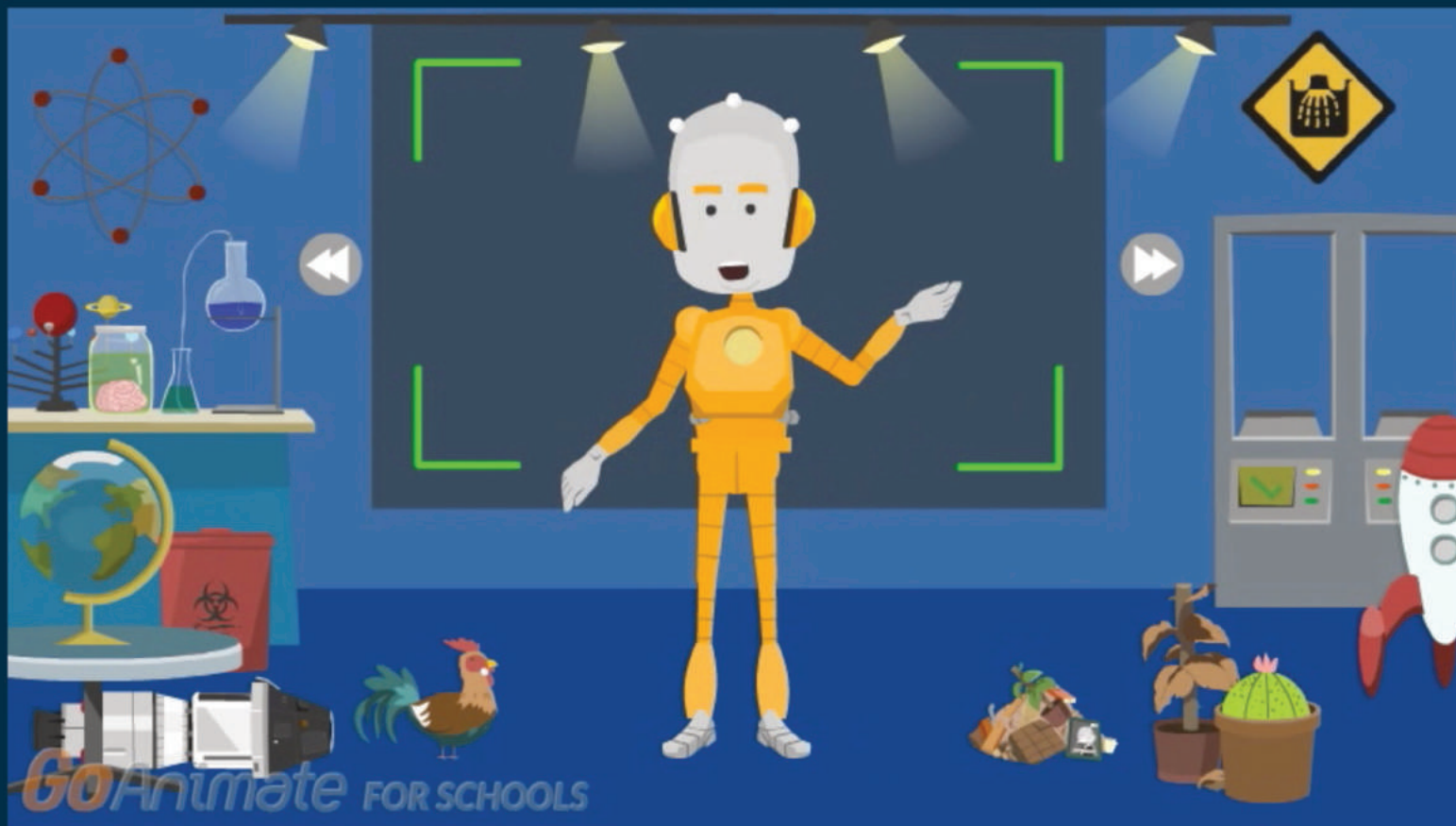
**NASÚLA
WOSLOLYE**

Mázaškaŋškaŋ

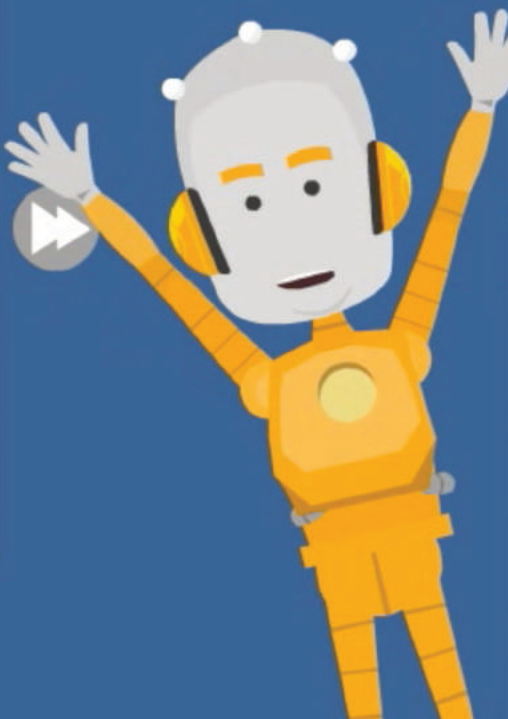
GoAnimate FOR SCHOOLS



Mázaškanškan



Háu! Mas'wíchaša hemácha na Nasúla emáçiyape ló.



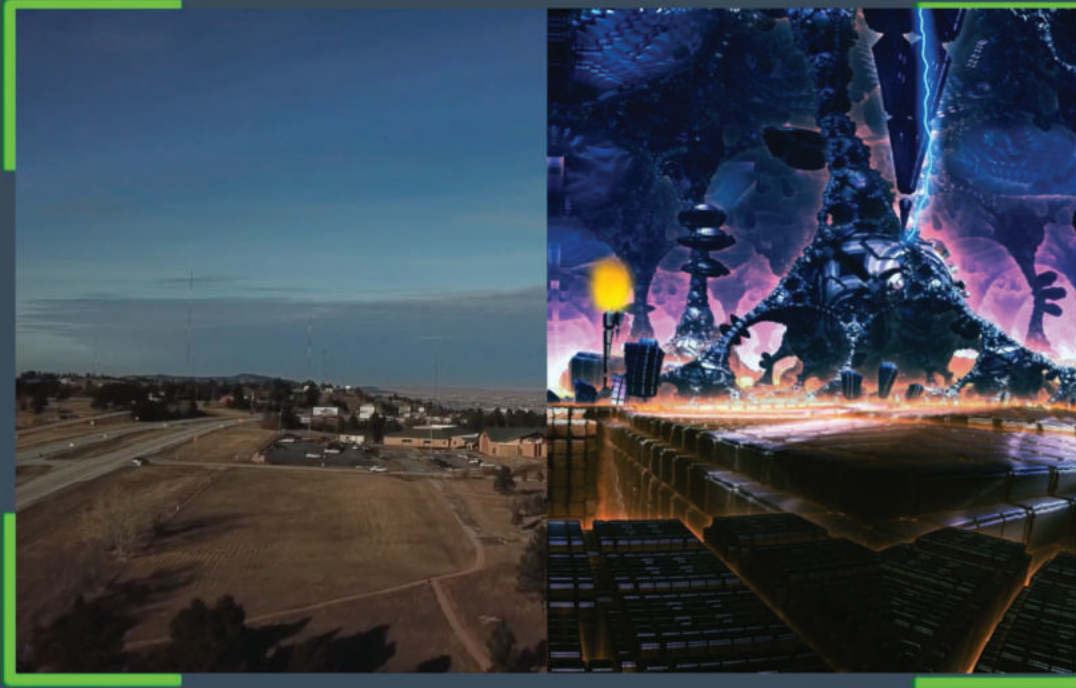
GoAnimate FOR SCHOOLS

Na mázaškaňškanj ečhíyatanhanj takúku očhíčiyakapi wačhínj.



GoAnimate FOR SCHOOLS

Mázaškaňškaň uň oápħe kiň uňkíyuthápi uňkókihipi.



GoAnimate FOR SCHOOLS



GoAnimate FOR SCHOOLS

Mázaškaňškaň uň waná toháňtu kiň slo'úňyaňpi.



GoAnimate FOR SCHOOLS



GoAnimate FOR SCHOOLS

Ehánk'ehañ, oyáte kiŋ wí kiŋ é na čhasmú-wíyuthápi uŋ oápĥe kiŋ slolyéič'iyapi.



*Go*Animate FOR SCHOOLS



GoAnimate FOR SCHOOLS

Aḡpétu waḡží éł oápḡe wikčémna núm sáḡm tób yukḡé. Oápḡe waḡží éł, oápḡe čík'ala wikčémna šákpe yukḡé. Naháḡ oápḡe čík'ala waḡží éł, okpí wikčémna šákpe yukḡé.



GoAnimate FOR SCHOOLS

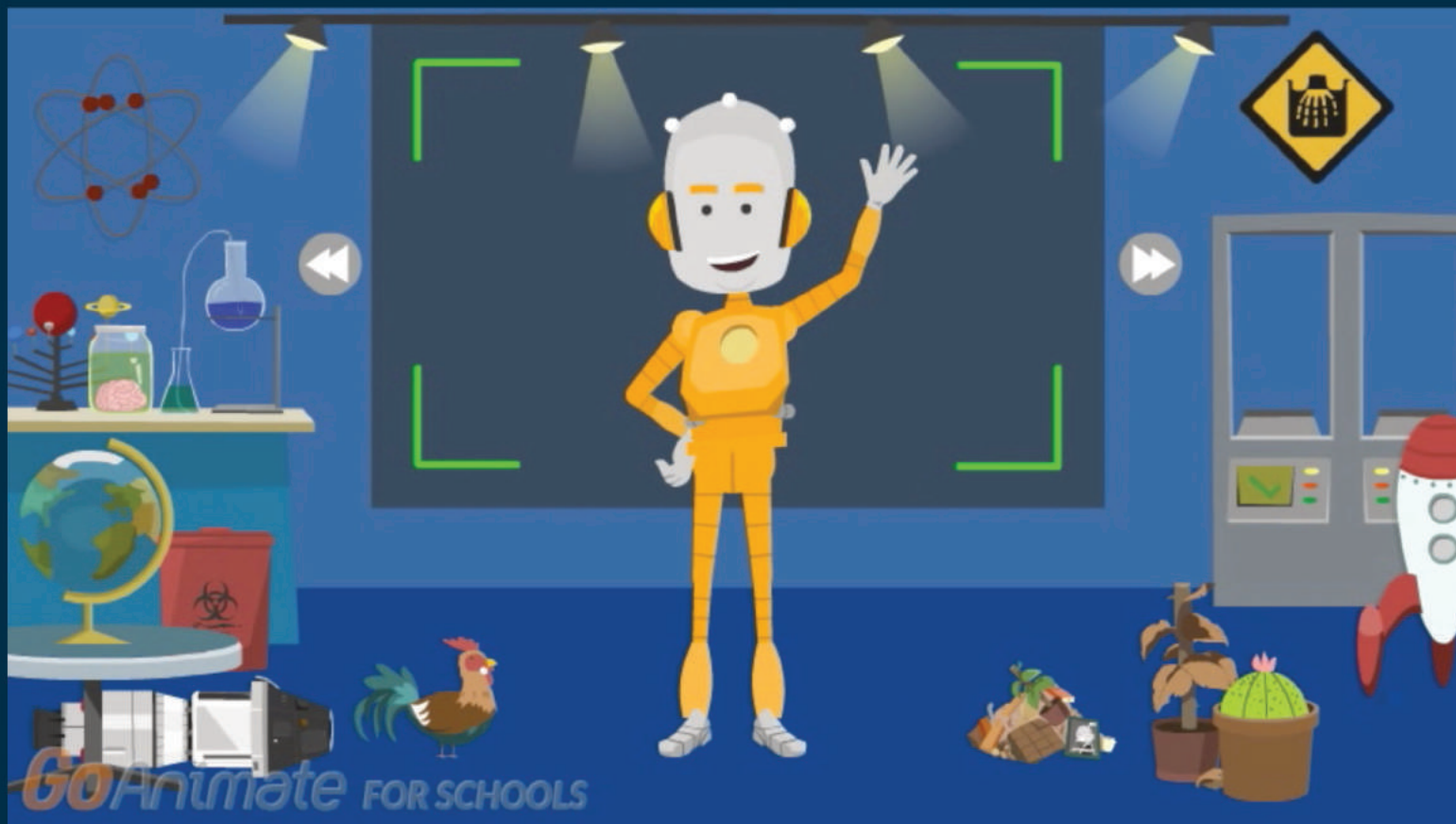
Na agná eháñni, hañhépi wí uñ oápħe kiñ slolyéič'iyapi.



Hé wóiyukčan hécha yeló.



Huňhuňhé! Nakéš mázaškaňškaň kiň awábleze!



Oápħe kiŋ waná imíçihuŋni éyaš eçháš kúpi na akhé Nasúla Wóslolye eyápi húŋħ yunáyeçhiçhiyapi kte ló.