

**Witka Ikrákpipi**

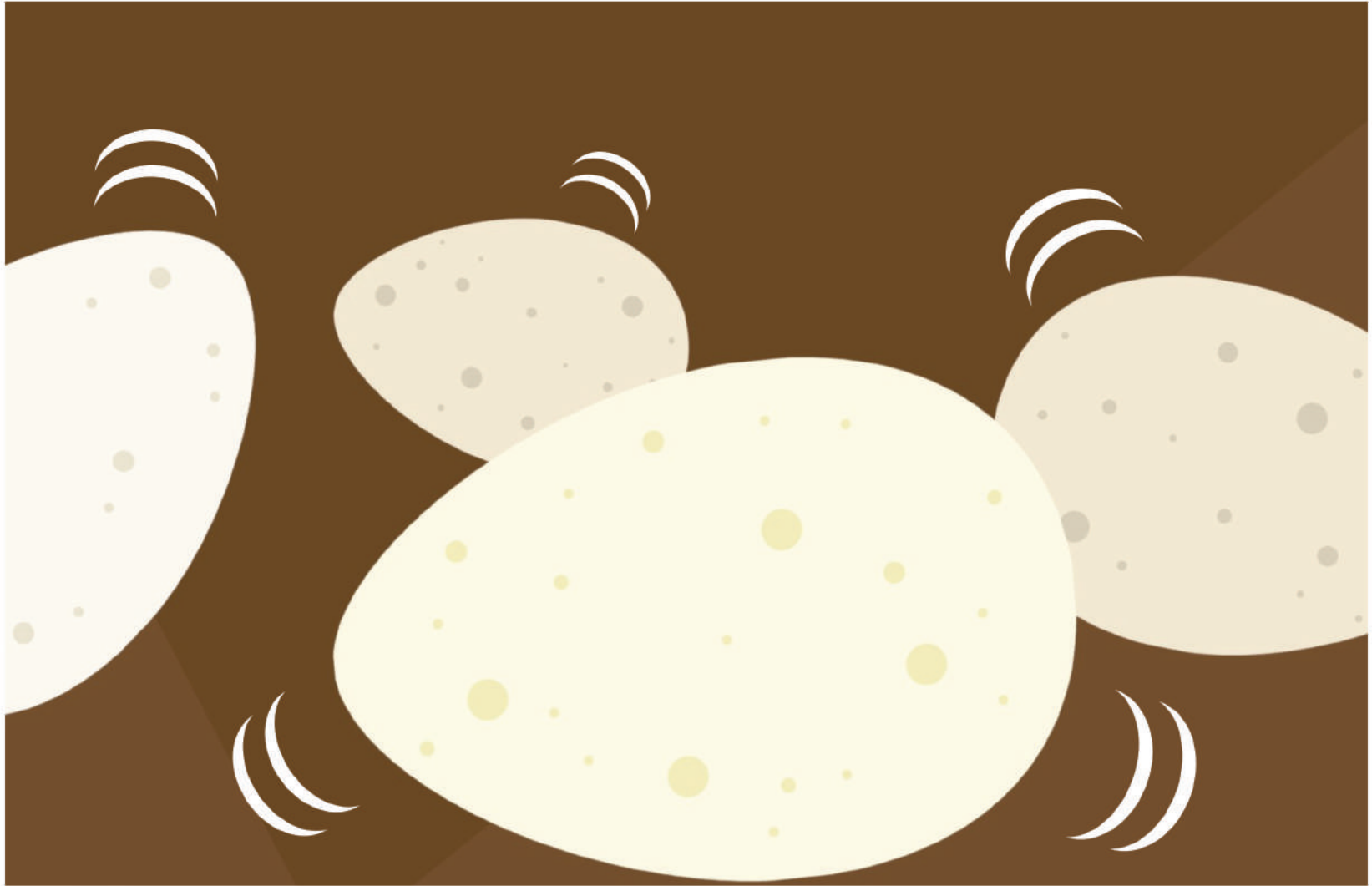


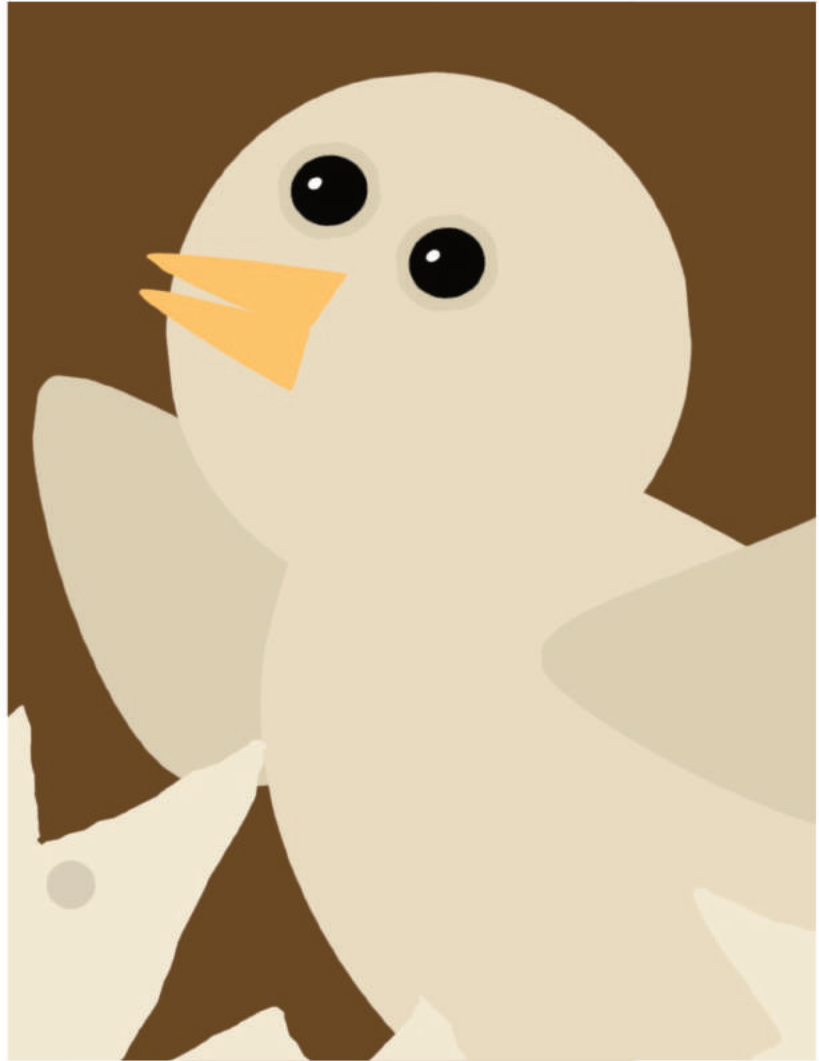
Witka Ikrákpipi

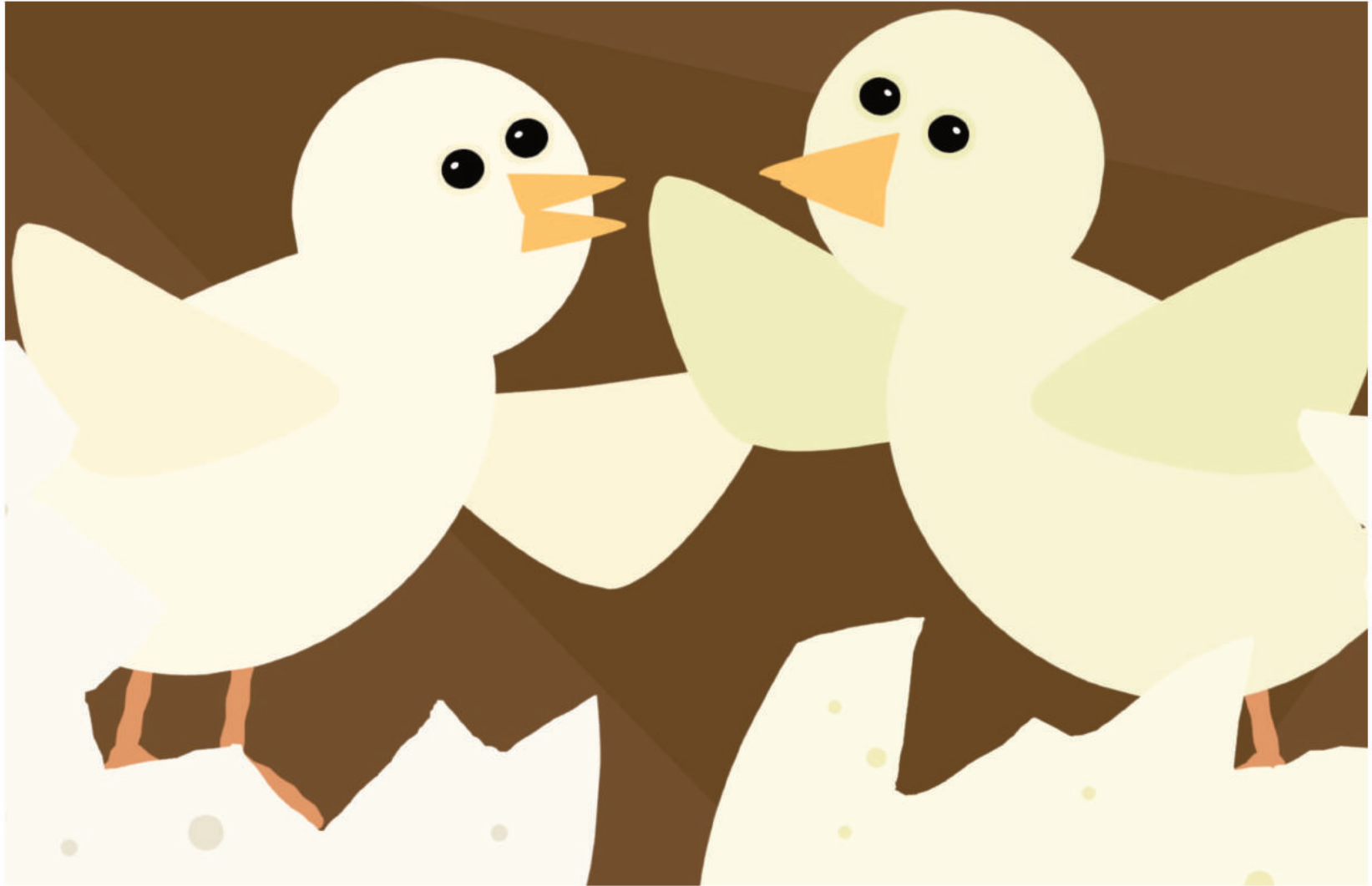


Wanyánka po/pe!  
Waná uŋžíčala kiŋ ikpákpi.

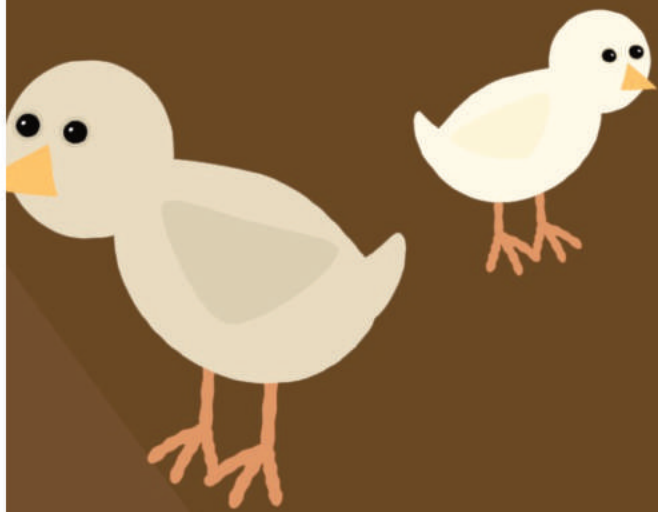




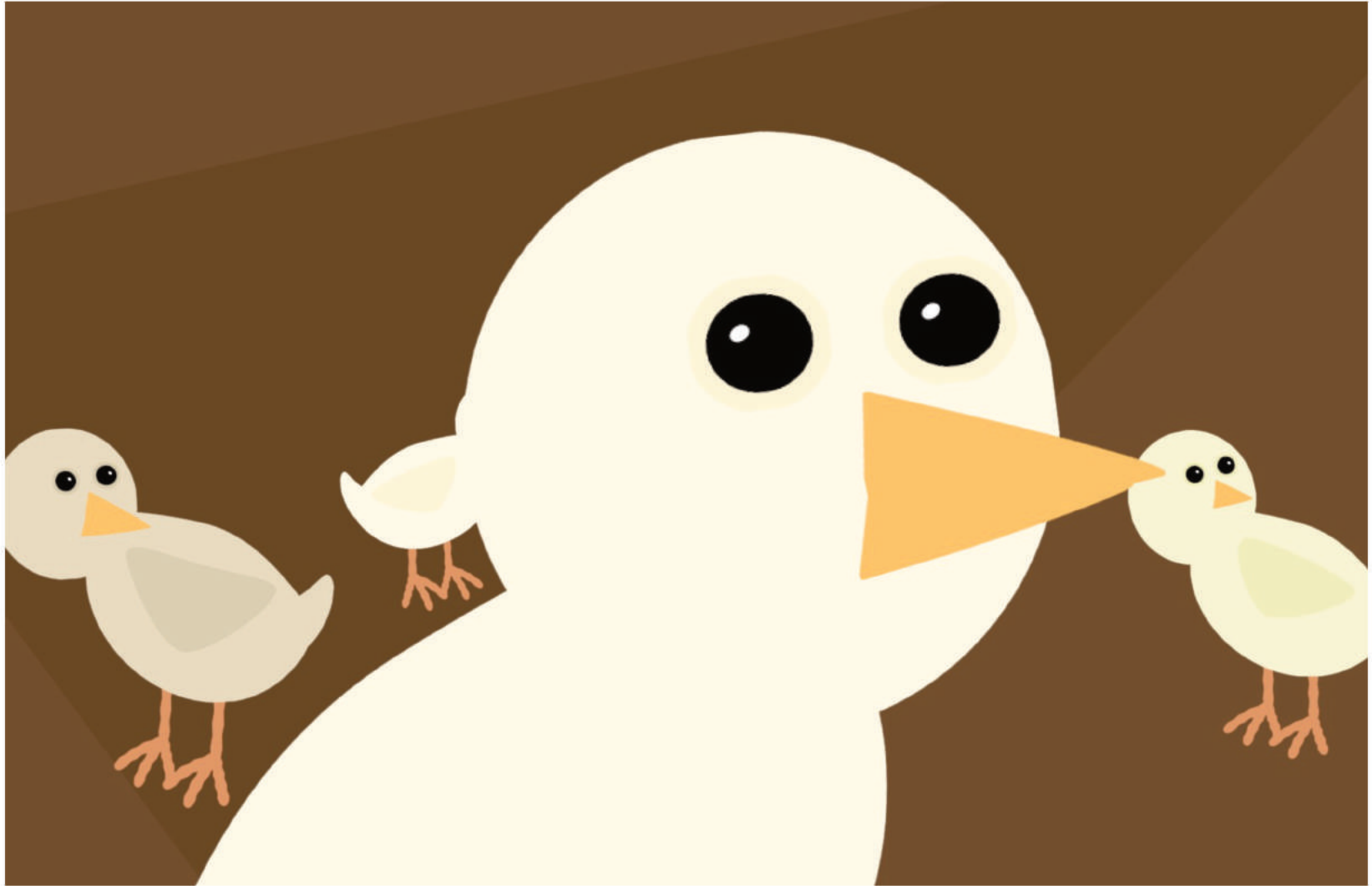




Líla waštéštebla!

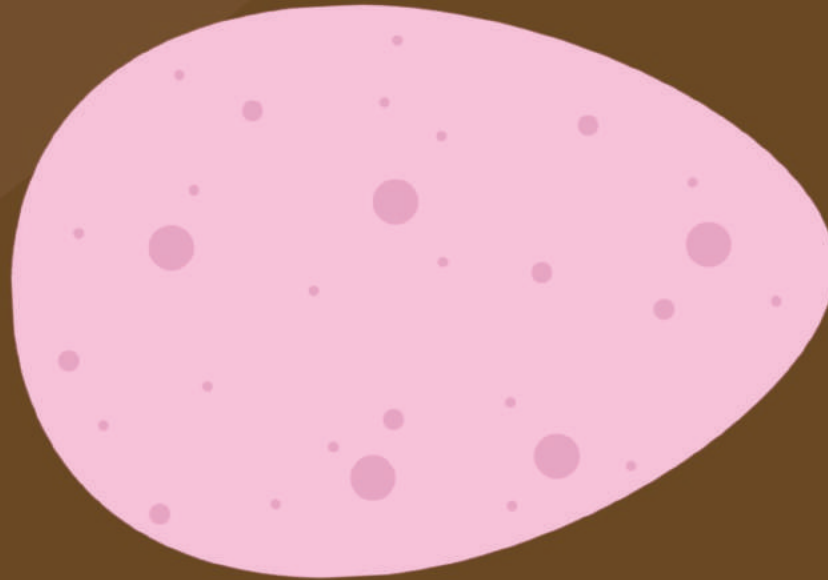
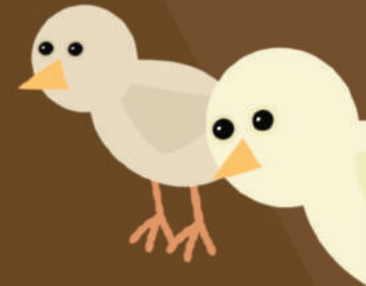
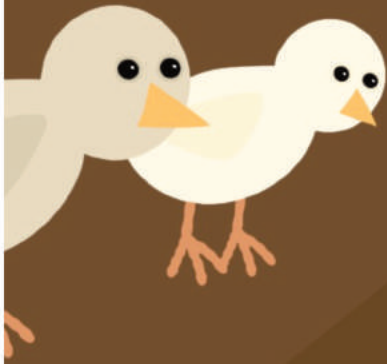


Éyaš hínyan̄ka.!

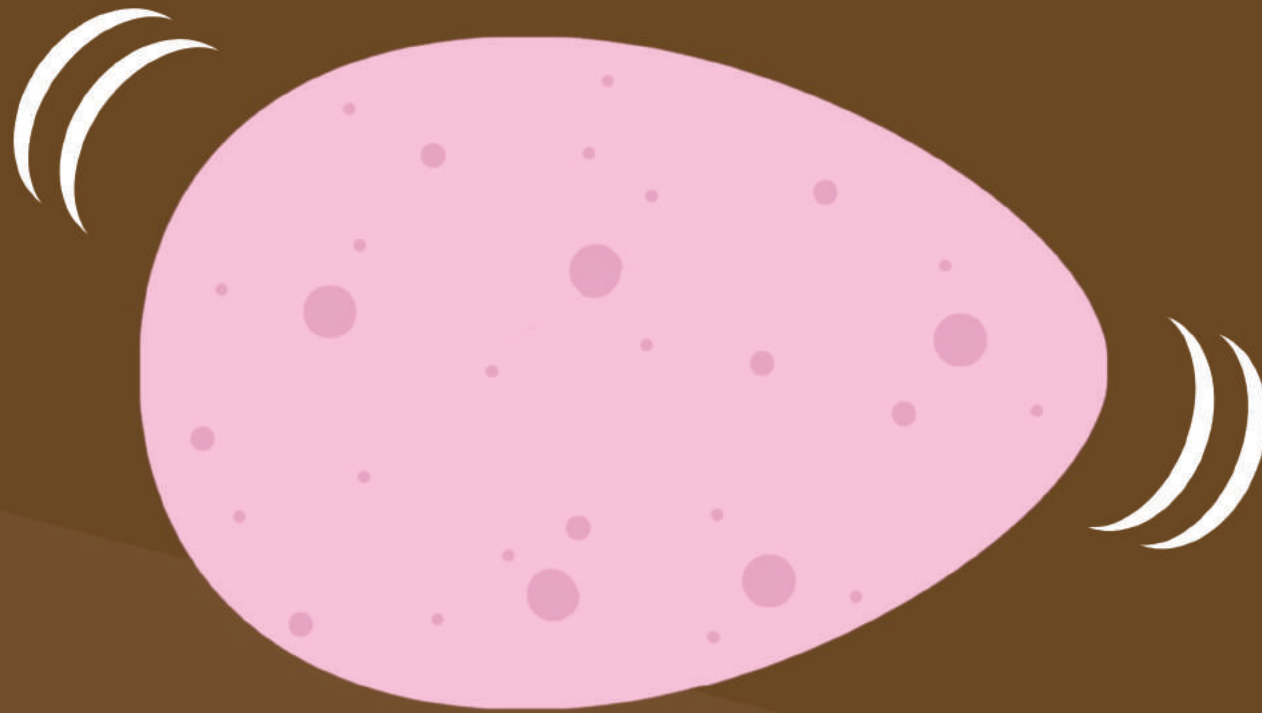


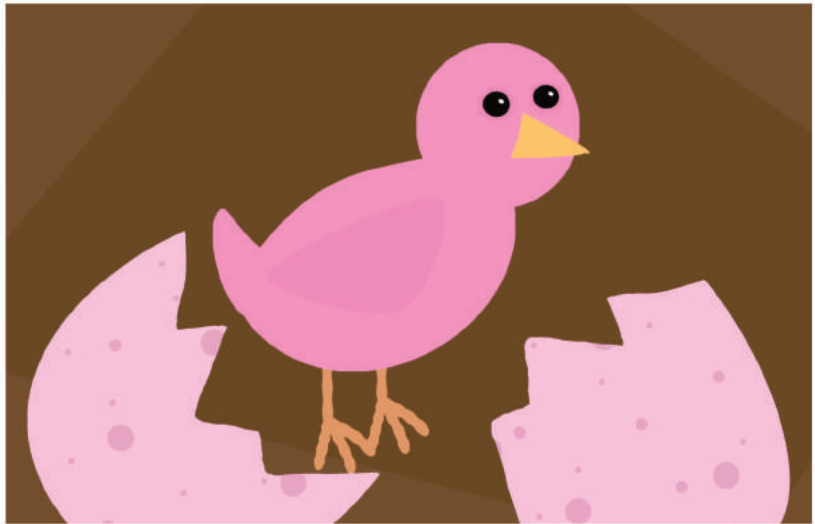
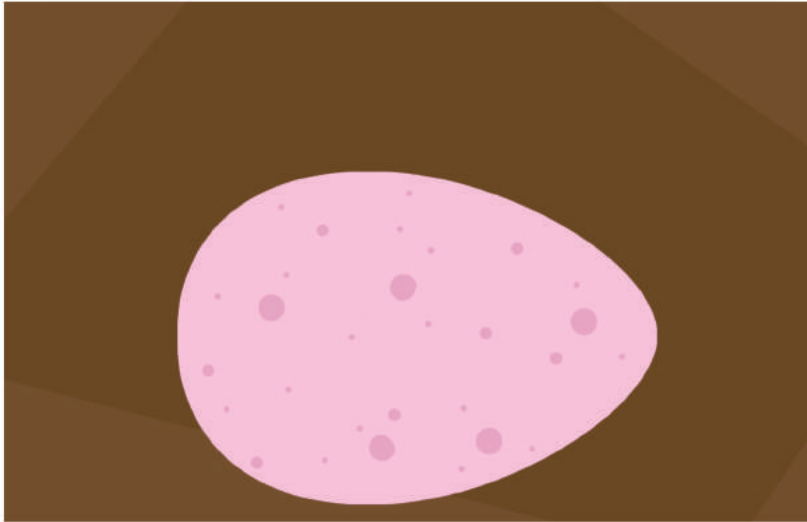


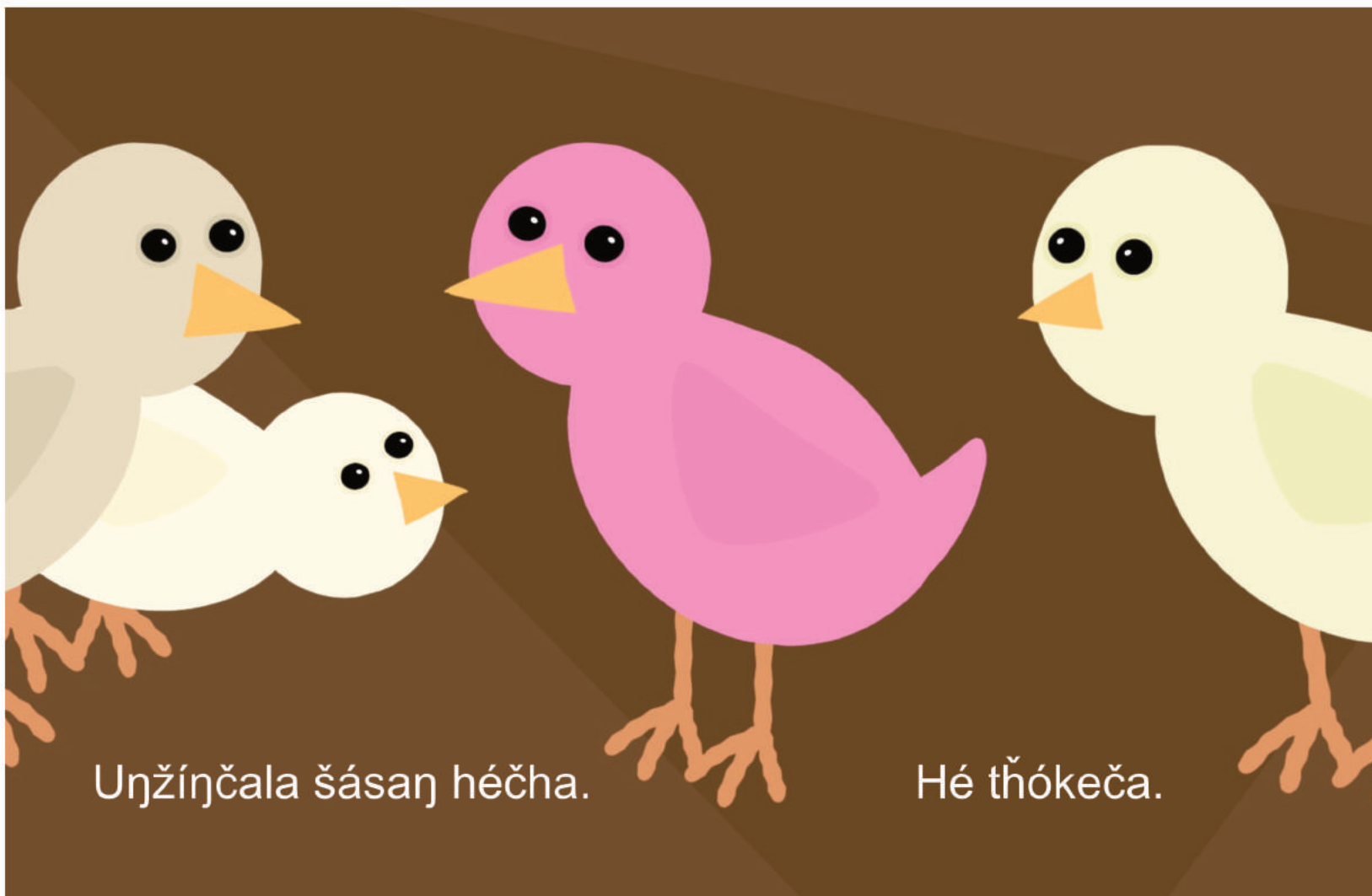
Wítka šásaŋ kiŋ hé thókča.



Šásaŋ kiŋ hé ogná táku úŋ he?







Unžínčala šásaŋ héča.

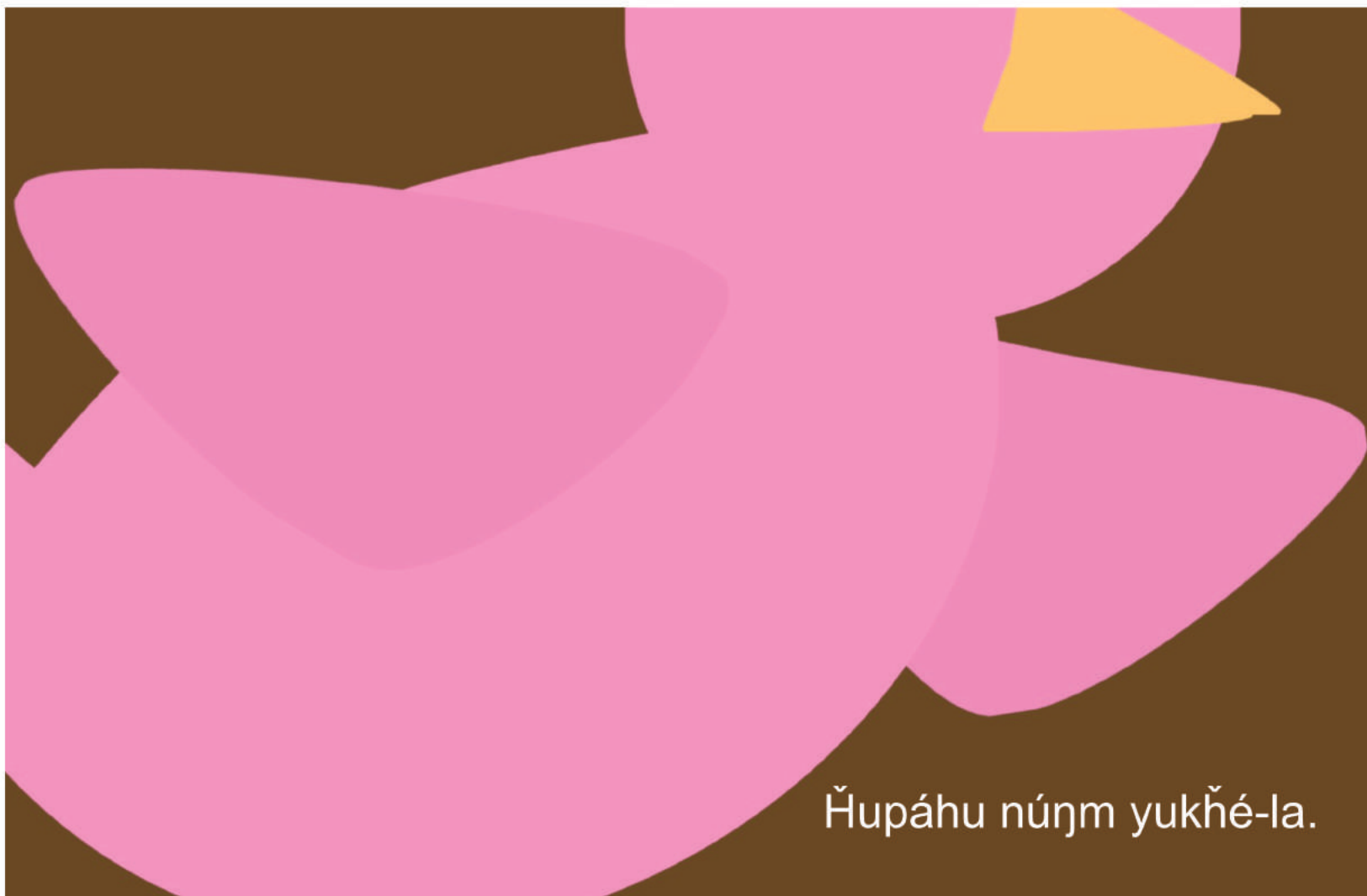
Hé thókeča.




Éyaš hé anúŋwab uŋmá  
kiŋ iyéwičhačhéča he?



Hú núŋm yukhě-la.



Ĥupáhu núŋm yukĥé-la.

An abstract graphic design featuring a dark brown background. On the left side, there are several overlapping shapes: a large pink circle, a smaller black circle, and two yellow triangles pointing towards the right. The text 'Přasú wanží yukhé-la.' is positioned on the right side of the image.

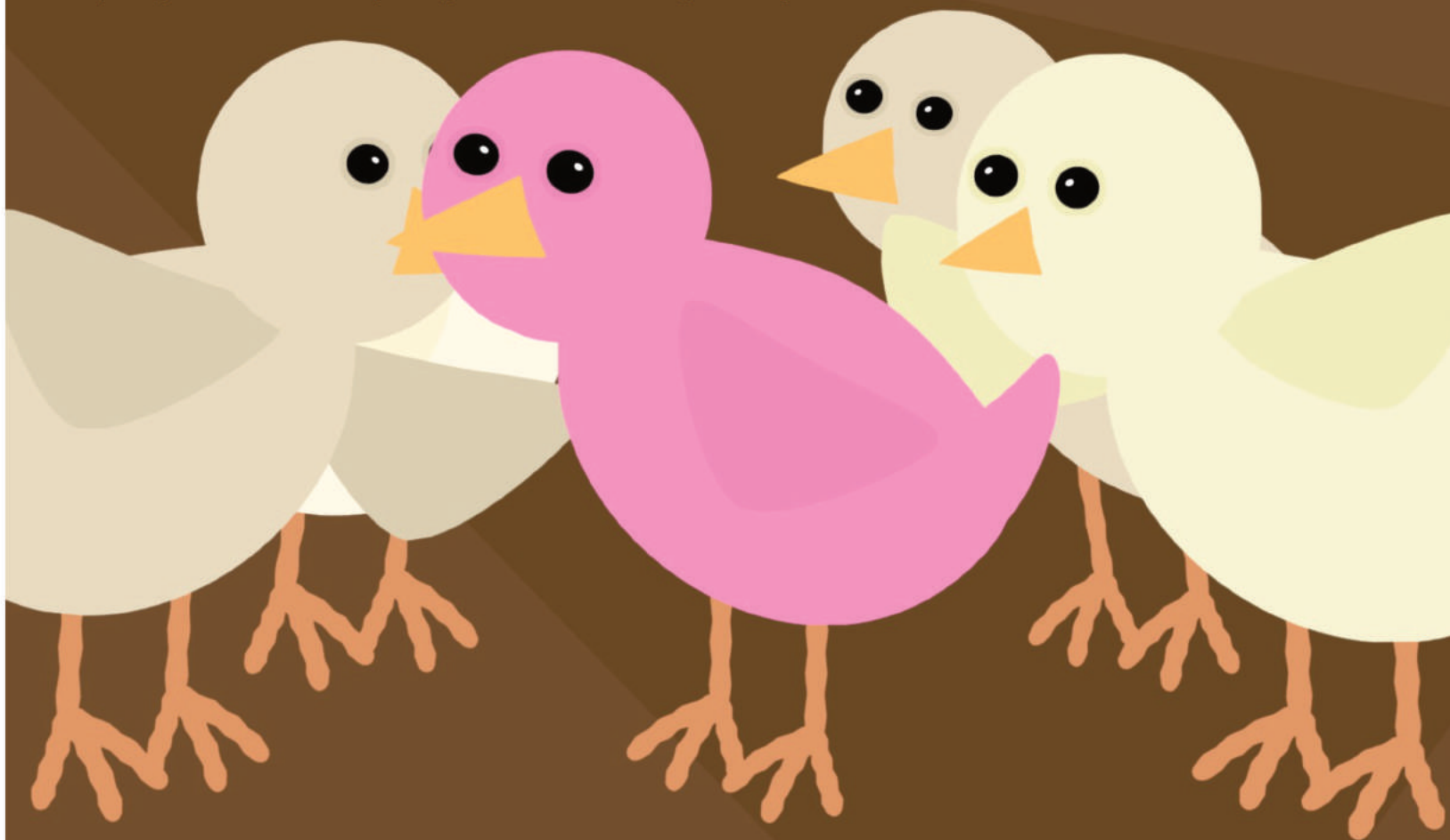
Přasú wanží yukhé-la.



Uḡmá kiḡ lílakel iyéwičhačhéča.



Užínčala šásan̄ kiŋ thiwáhe kiŋ lé ópħa.



Unžínčala thiwáhe iyókiphi héčhapi!

