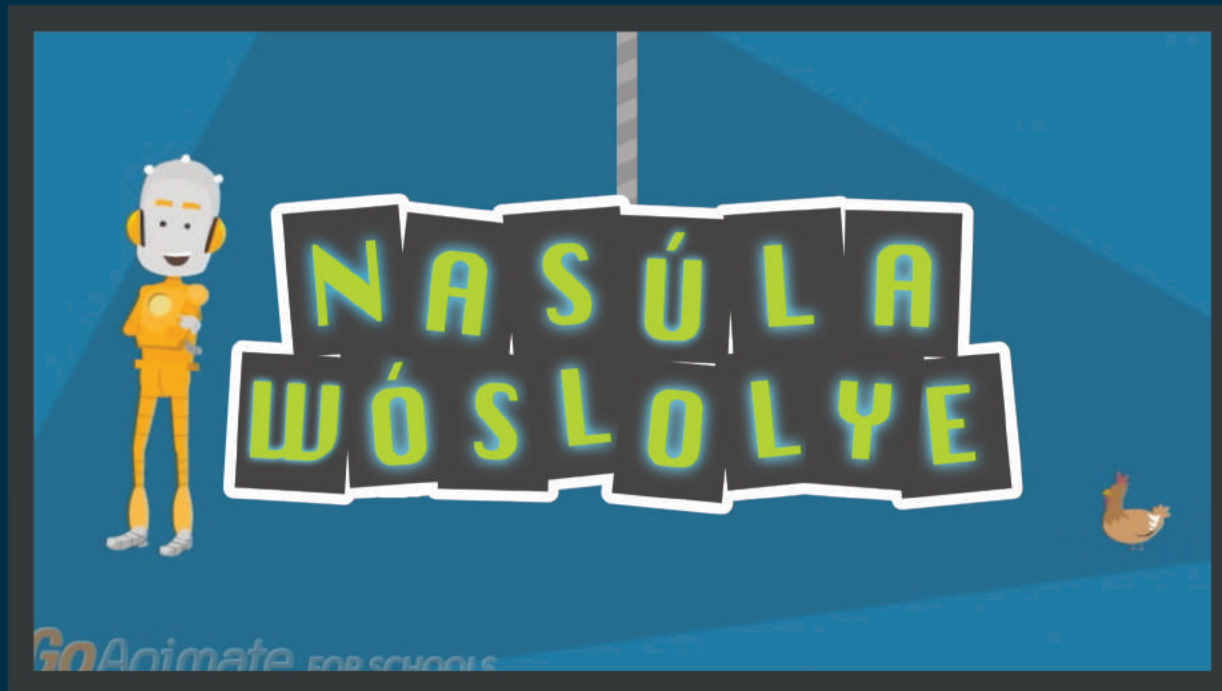


NASÚLA
WÓSLOLYE

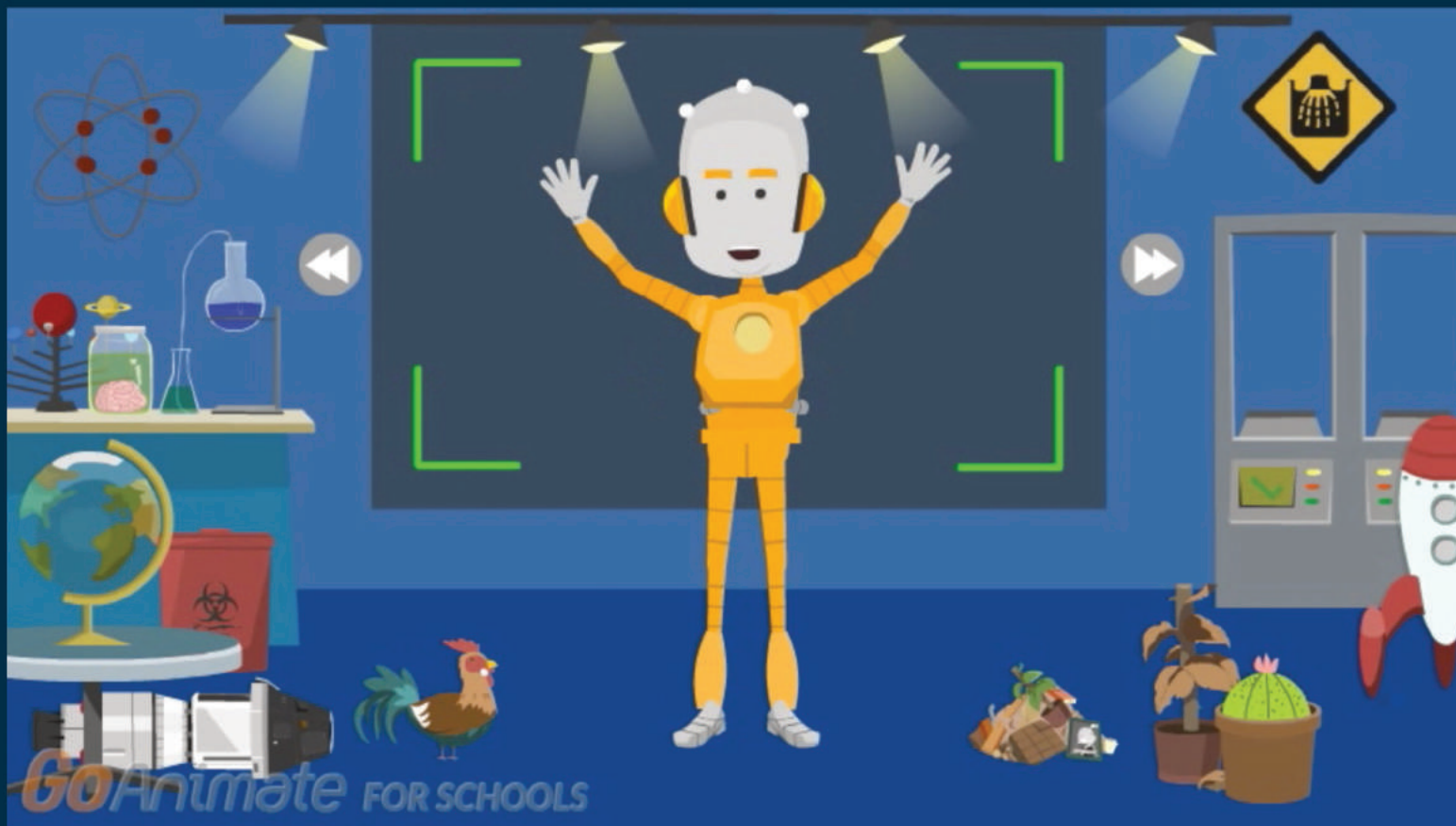


Mathó

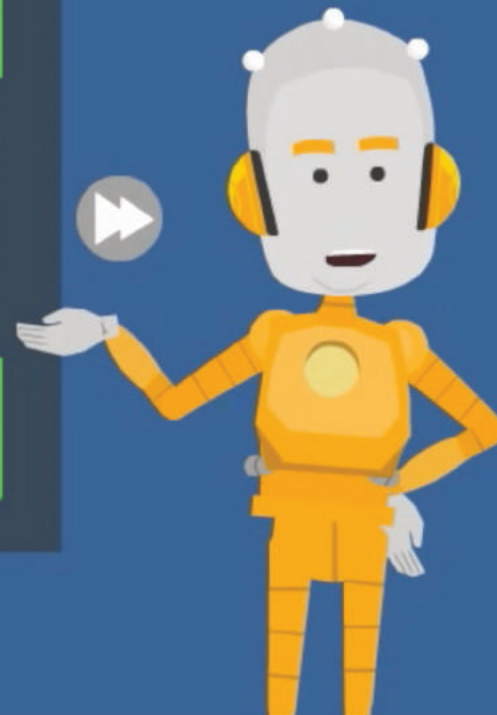
Go online for schools



Mathó



Háu! Mas'wíchaša hemácha na Nasúla emáçiyape ló.



GoAnimate FOR SCHOOLS

Na mathó ečhíyatanhan takúku očhíčiyakapi wačhín.



GoAnimate FOR SCHOOLS

Matħó kinħán makħásitomniyaŋ úŋpi.

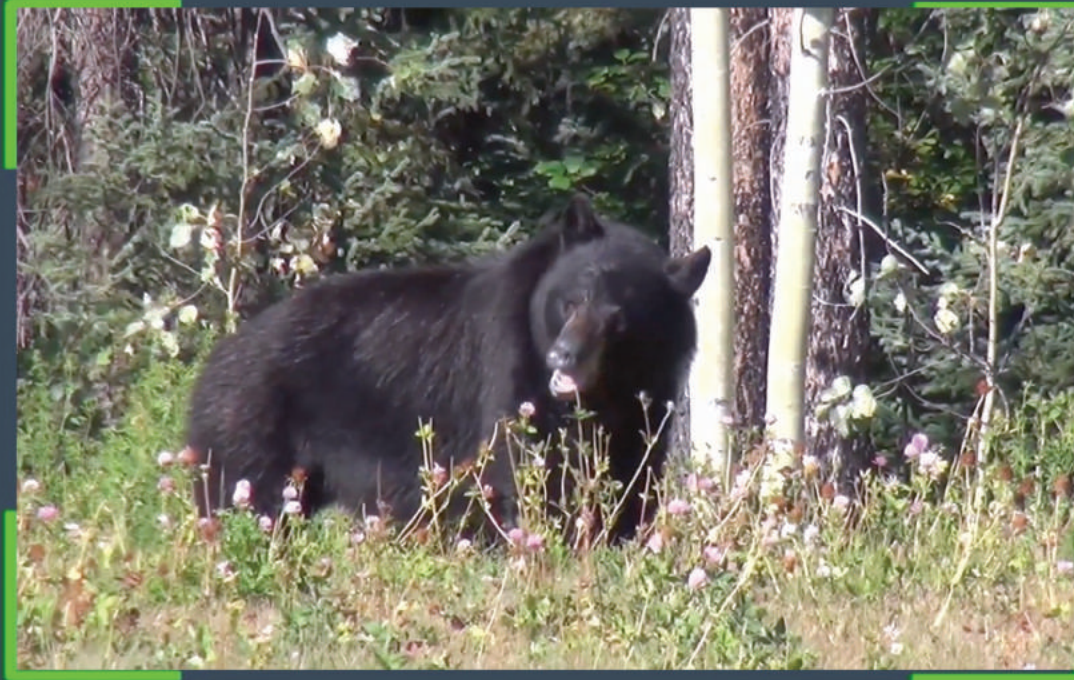


GoAnimate FOR SCHOOLS

Khéya Wíta Makhóche kiŋ lél, lenáke úŋpi:
mathósapa, mathóhota, na mathóska kiŋ hená.



*Go*Animate FOR SCHOOLS



GoAnimate FOR SCHOOLS

Mat'ho kiŋ thaló na nakúŋ wat'ótho yútapi.



GoAnimate FOR SCHOOLS

Waníyetu kiŋ óptapta mathó kiŋ iyúha waniíštijmapi
na wétu ahí šni haŋní kiktápi šni.



GoAnimate FOR SCHOOLS

Mathó kij ištáblezapi na nakúŋ yuphíya waómnapi na šna wanáh'upí.



GoAnimate FOR SCHOOLS

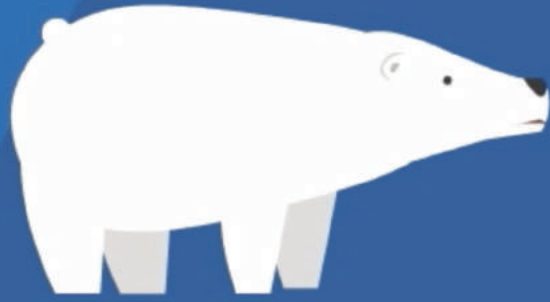
Mathó Paha é na Mathó Thípila kiη nuphín mathó íchážeyatapi.



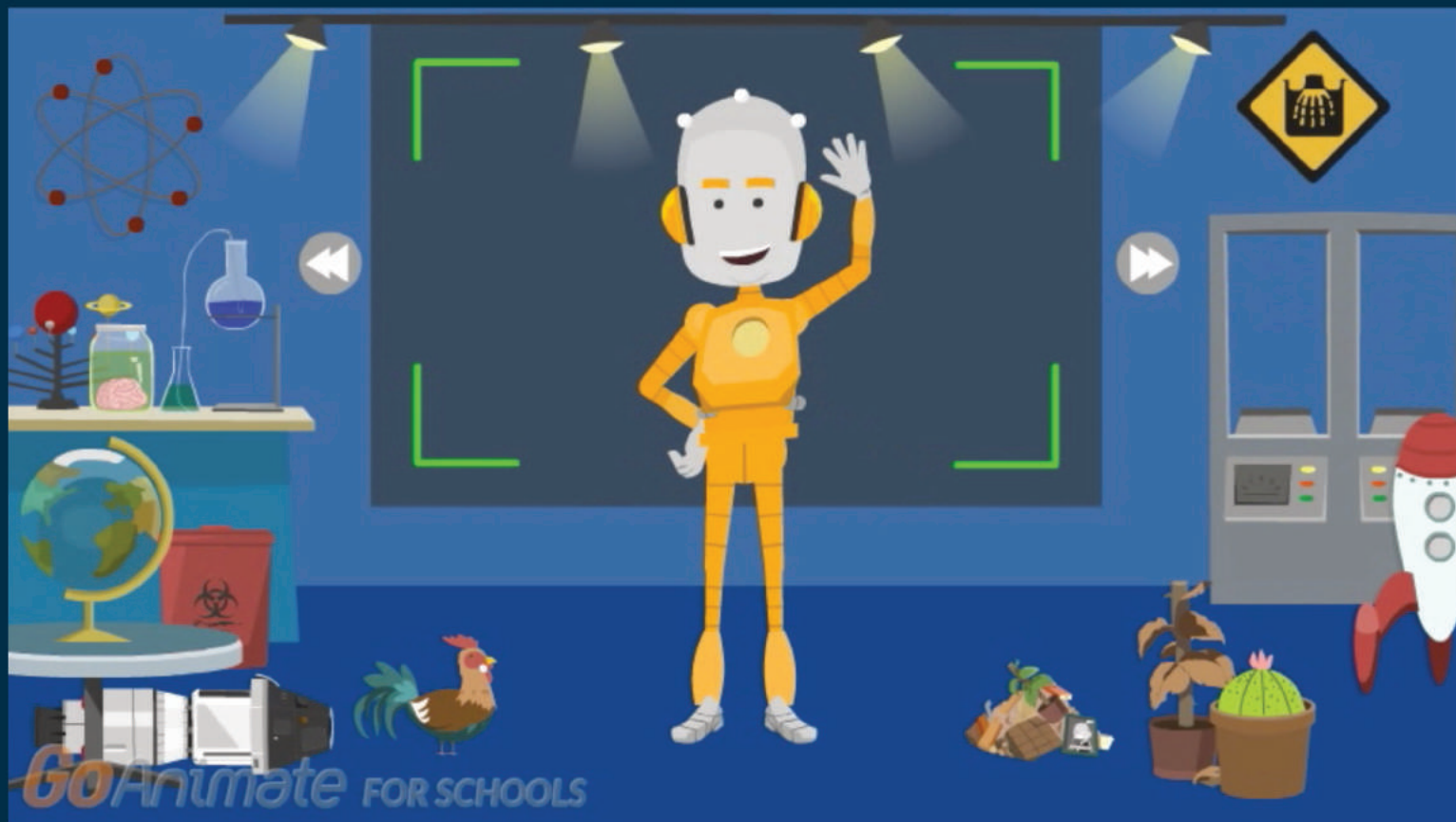
GoAnimate FOR SCHOOLS



Mat'ó wawí'chaktapi na e'cháš wi'chí'heyab e'chúŋ po!



GoAnimate FOR SCHOOLS



Éyaš miyé hemácha šni čha ečháš kúpi na akhé Nasúla Wóslolye eyápi
húňh yunáyečhičhiyapi kte ló.