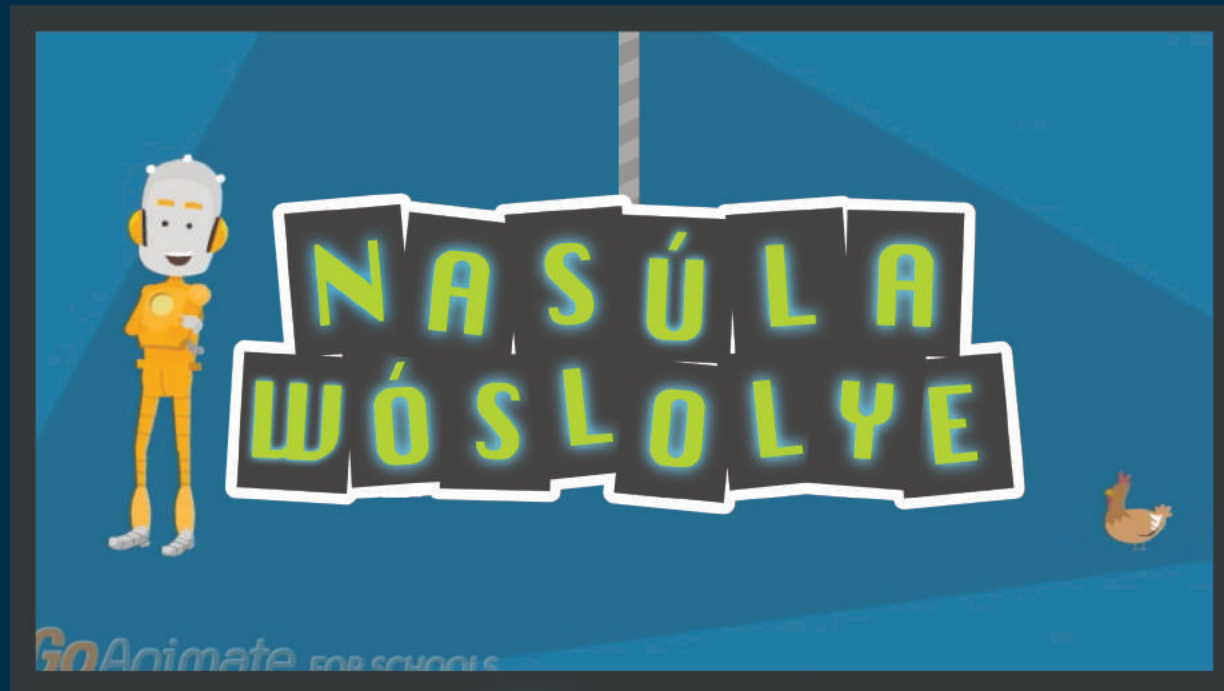


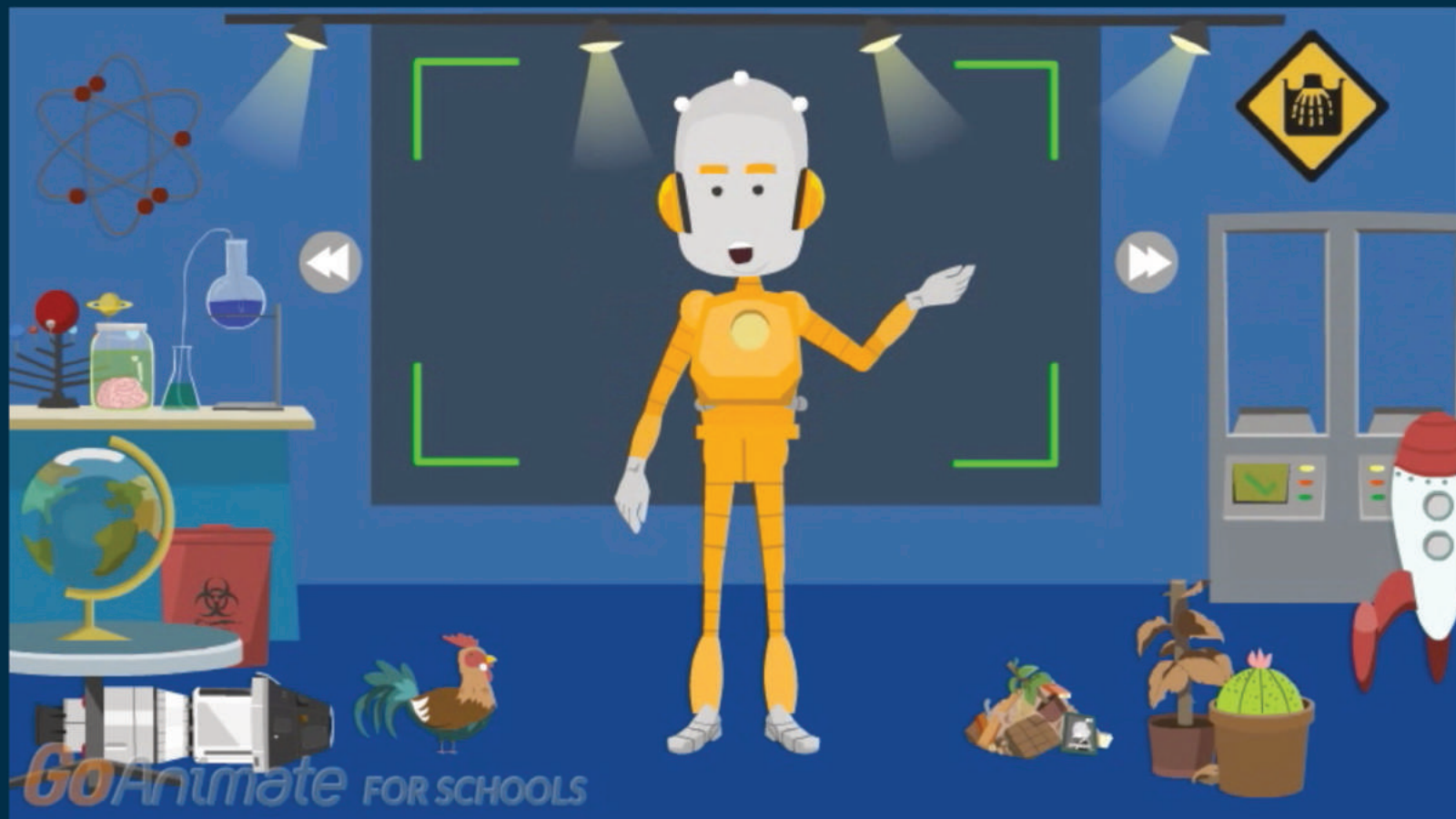
NASÚLA  
WÓSLOLYE

Pňéta

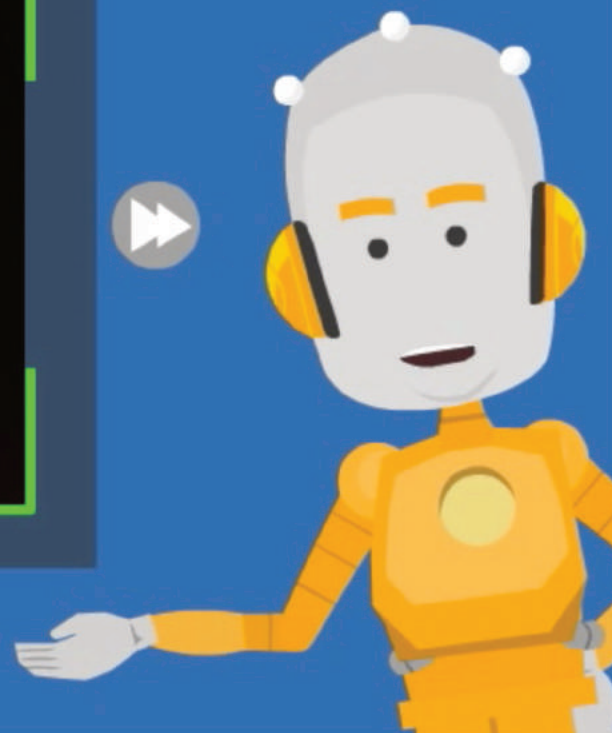




Pňéta



Háu! Mas'wíchaša hemácha na Nasúla emáçiyape ló.



*GoAnimate* FOR SCHOOLS

Na takúku pĥéta ečhíyatanĥan očhíčiyakapi wačhín yeló.



*GoAnimate* FOR SCHOOLS

Pǎéta yukhín kte háŋtaŋš táku yámni eháŋtaŋ yukhín kta waŋ yaŋké.  
Takúŋl iléye-phičá, waniya, na wókǎate.



*GoAnimate* FOR SCHOOLS

Takúku iléye-phičá kiŋ hé, uŋnáš čhałlí naiŋš táku wígli  
naiŋš čháŋ ešáša úŋpi okíhipi.



GoAnimate FOR SCHOOLS

Pǎéta kinqhánj tókhel okíhika kǎáte!



GoAnimate FOR SCHOOLS

Մը lol'ւնկի՛ղ'աղի na šna wašlóւղյաղի.





Pñeta kiḡhán wókħokpñeke. Eháš khiyéla iyáhuḡnipi háḡtaḡš, ḡuníyaḡpi kte.



*GoAnimate* FOR SCHOOLS

P'héta wanží wanlákapi hántaᅇš, t'háᅇkaka wanží onáᅇ'unya po!



Hunhunhé!  
Hé slolyé-phičá yeló!



Čha hé kiksúya po. Na ečháš kúpi nahán akhé Nasúla Wóslolye  
eyápi waŋží yunáyečhičhiyapi kte! Nasúla miyé yeló.