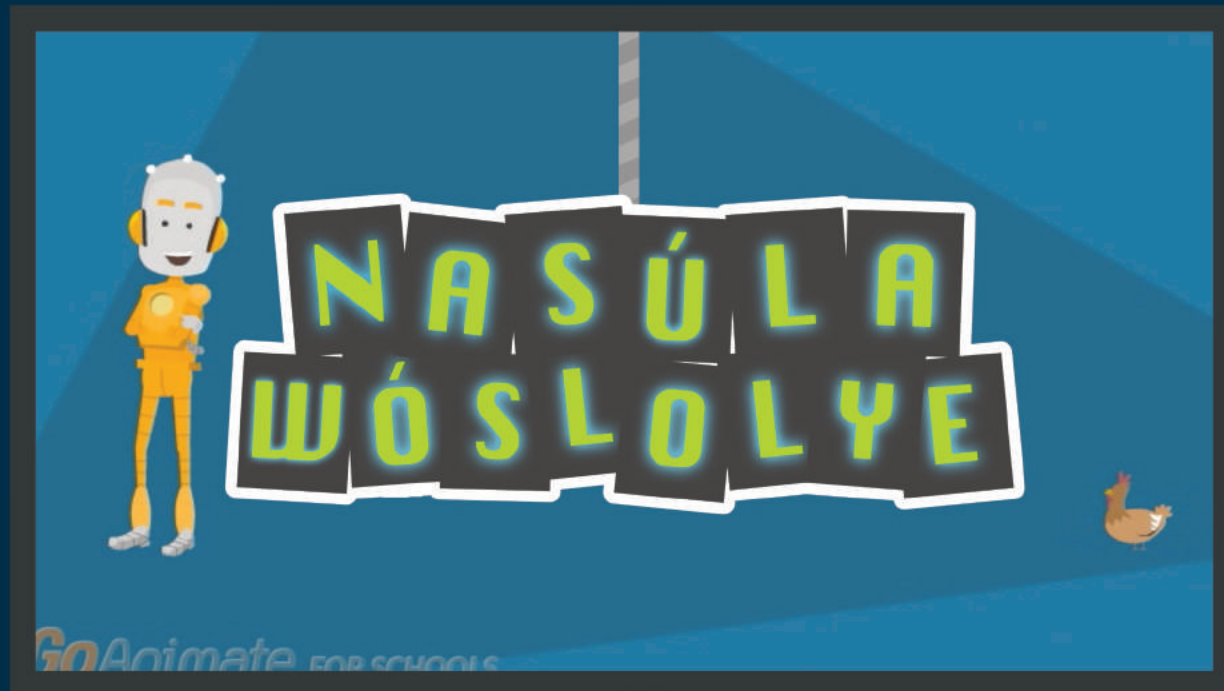


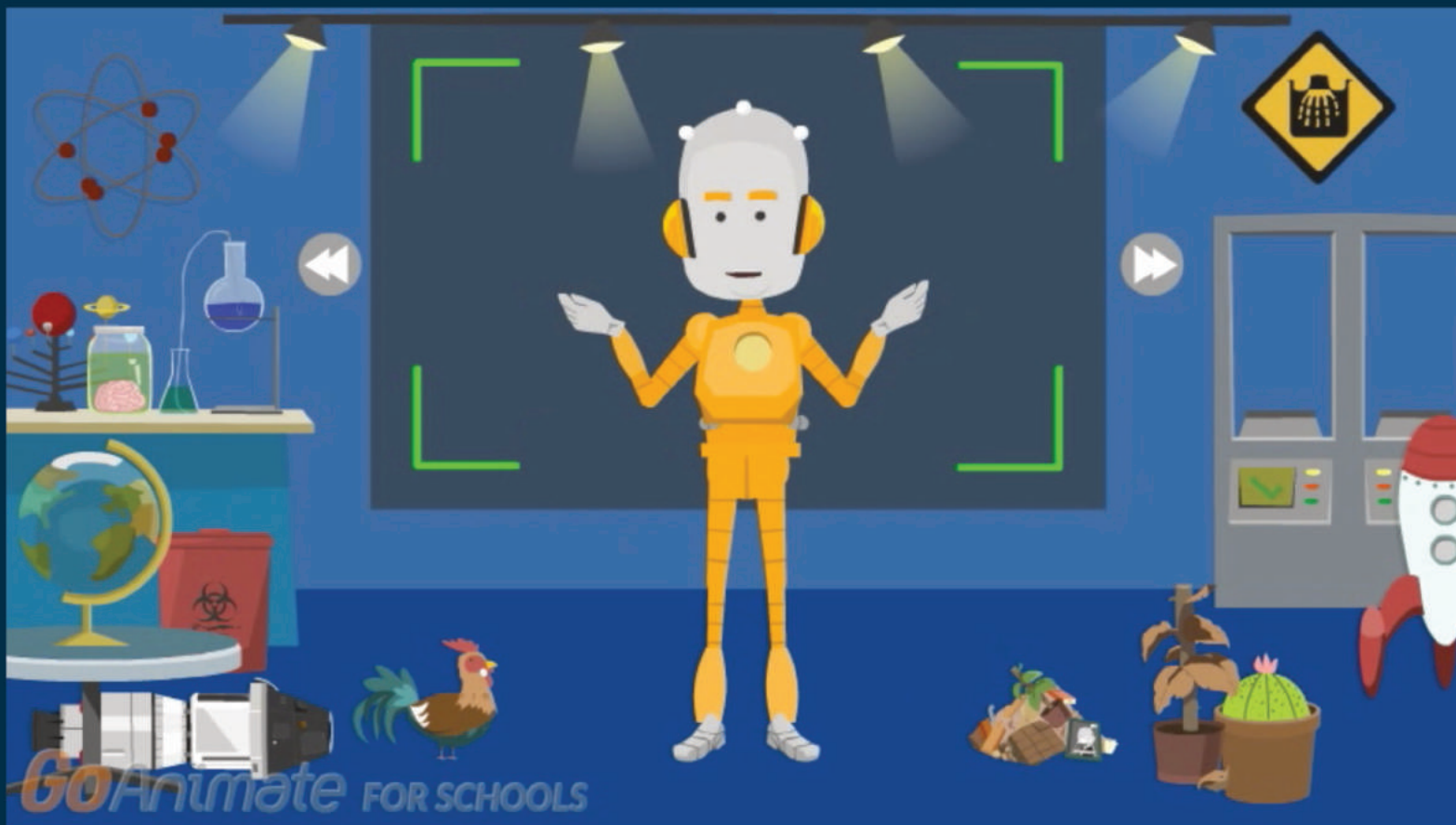
NASÚLA  
WOSLOLYE

Unkčéla

GO... SCHOOLS



Unkčéla



Háu! Mas'wíchaša hemácha na Nasúla emáçiyape ló.



*GoAnimate* FOR SCHOOLS

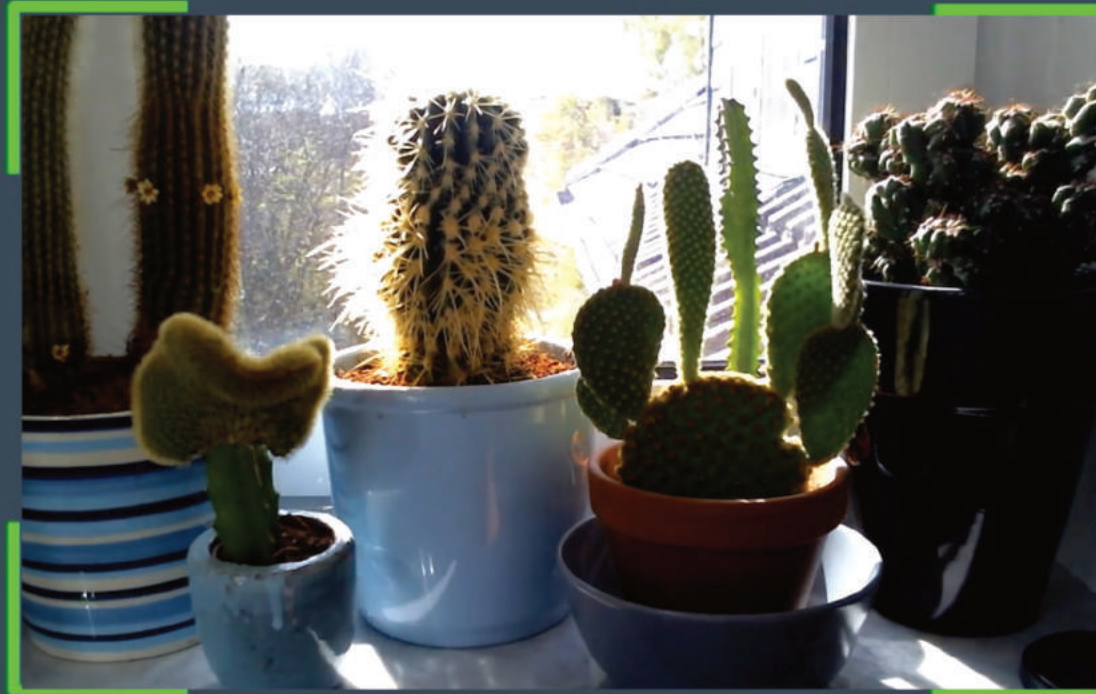
Na takú unċċéla eċĥiyatanġhaŋ oċĥiċiyakapi waċĥiŋ.



*GoAnimate* FOR SCHOOLS

Uňkčéla kinháň makhóče pušpúza él šna icháđe,  
iyótaňš čhasmú makhóče ektá.





GoAnimate FOR SCHOOLS

Ótakiya owányan̄ke, na líla íchith̄okeča.



*GoAnimate* FOR SCHOOLS

Ушкѣла кинһань макһатаһань мнӗ юскѣпинь на озӗиӗ'ийинь на ху ӗл айлуһа.



GoAnimate FOR SCHOOLS

Na óta ěča pĥepĥé, héchel naíč'ižin,  
iĥínŋ wamákháškanŋ óta oyúl waštélakapi naínš mní él úŋ kin iyútanpi.





*GoAnimate* FOR SCHOOLS

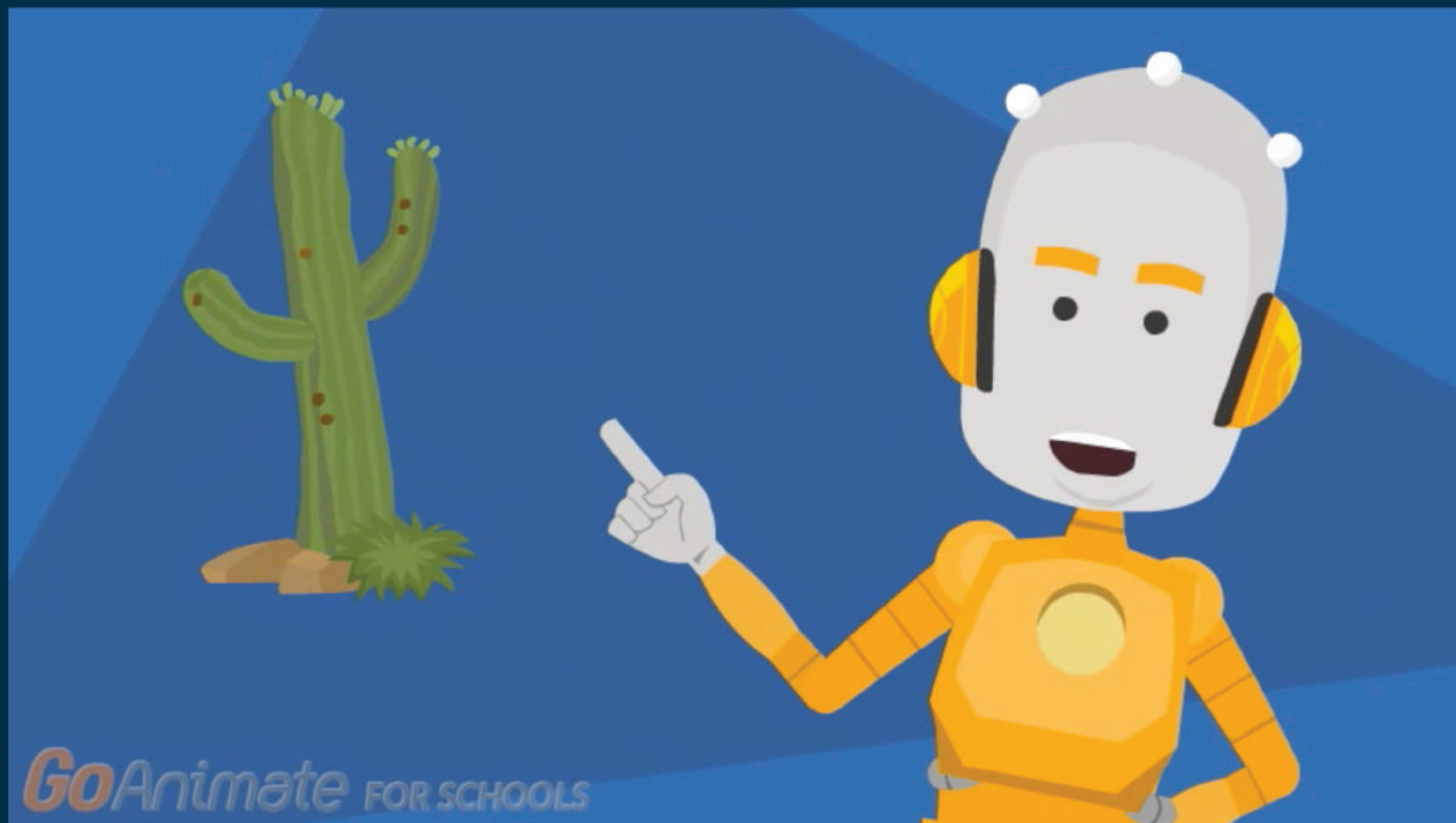


GoAnimate FOR SCHOOLS

Uḡkčéla wanžígži wanáhča na waskúyeča aíchaḡe.



*GoAnimate* FOR SCHOOLS



Hé khilí, inchéye!  
Yathípi kin ikhíyela unkcéla etán icháğa he?





Ečháš kúpi nahán akhé Nasúla Wóslolye eyápi wanží yunáyečhičhíyapi kte!  
Nasúla miyé yeló.