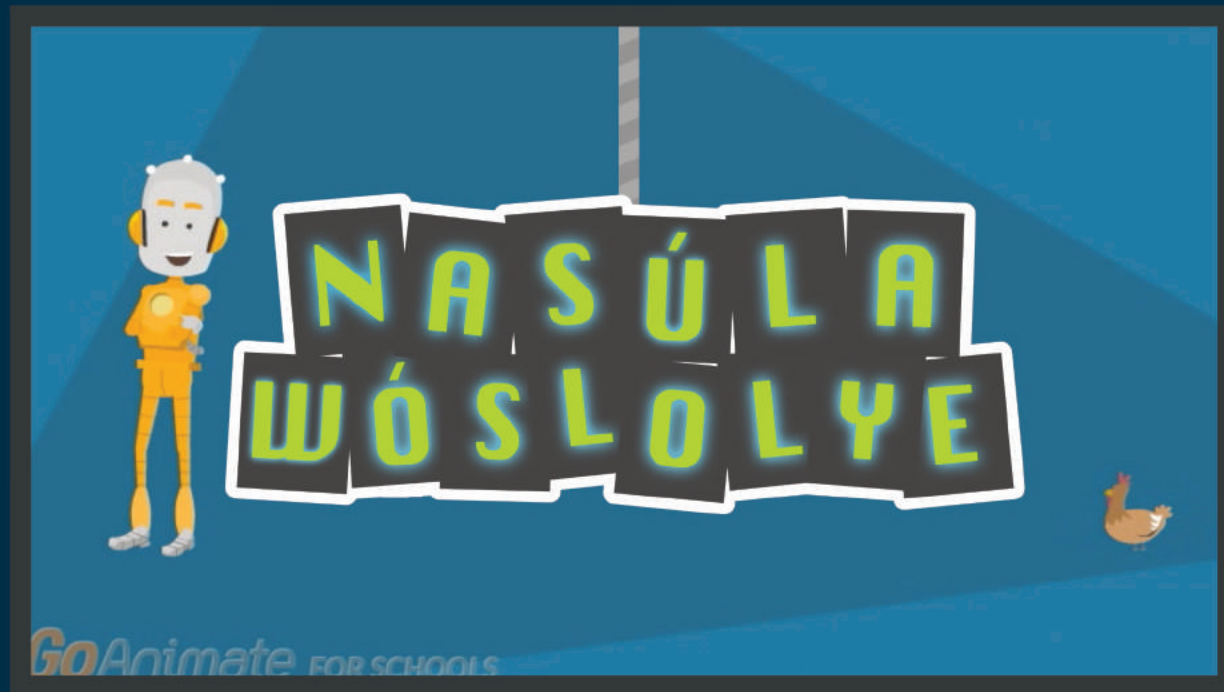


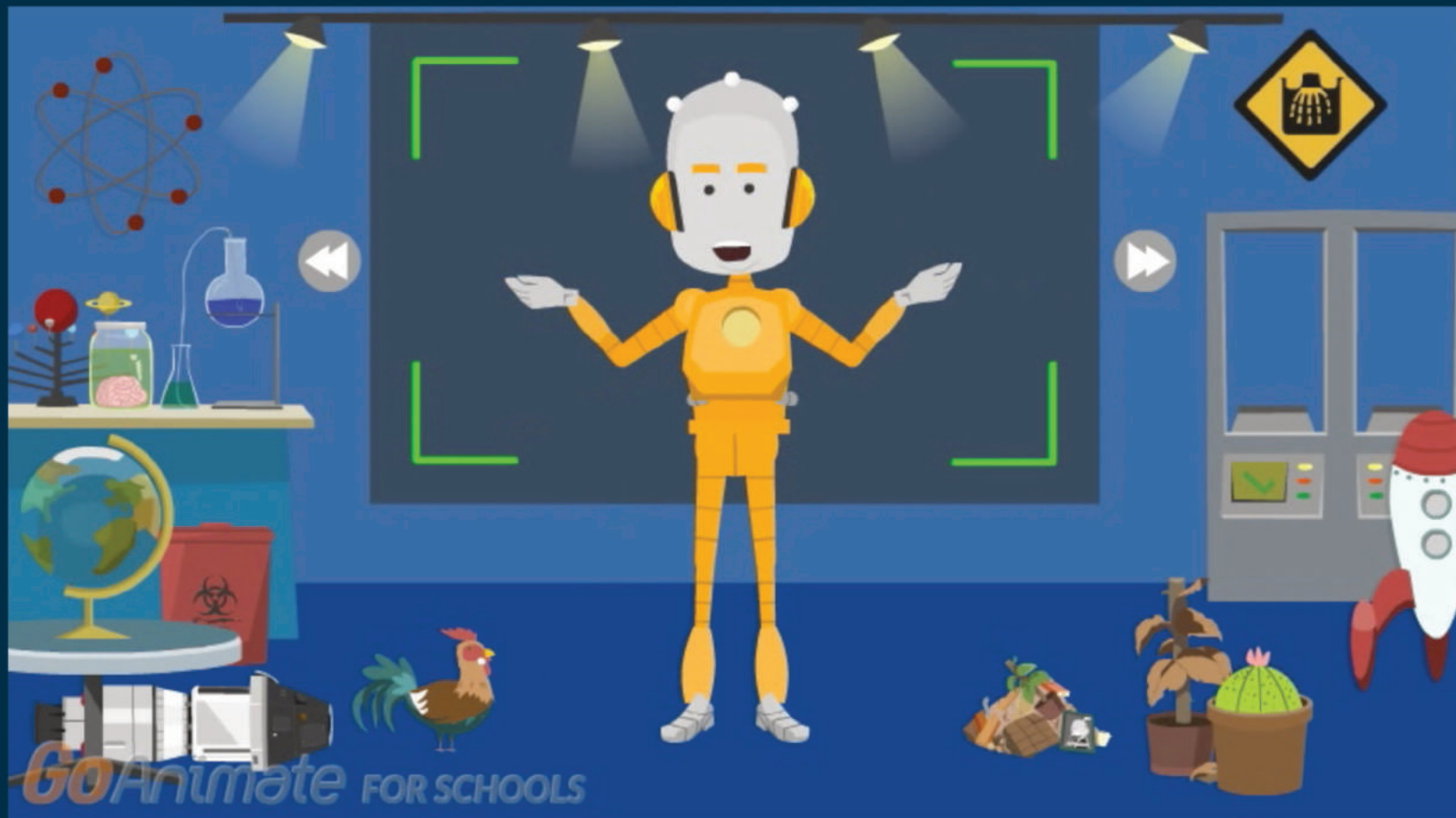
**NASÚLA
WÓSLOLYE**

Wamákħa Optáye

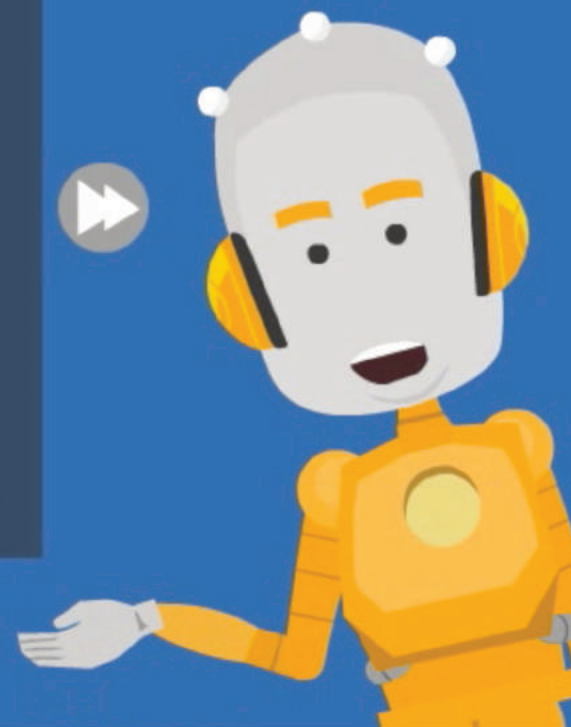




Wamákħa Optáye

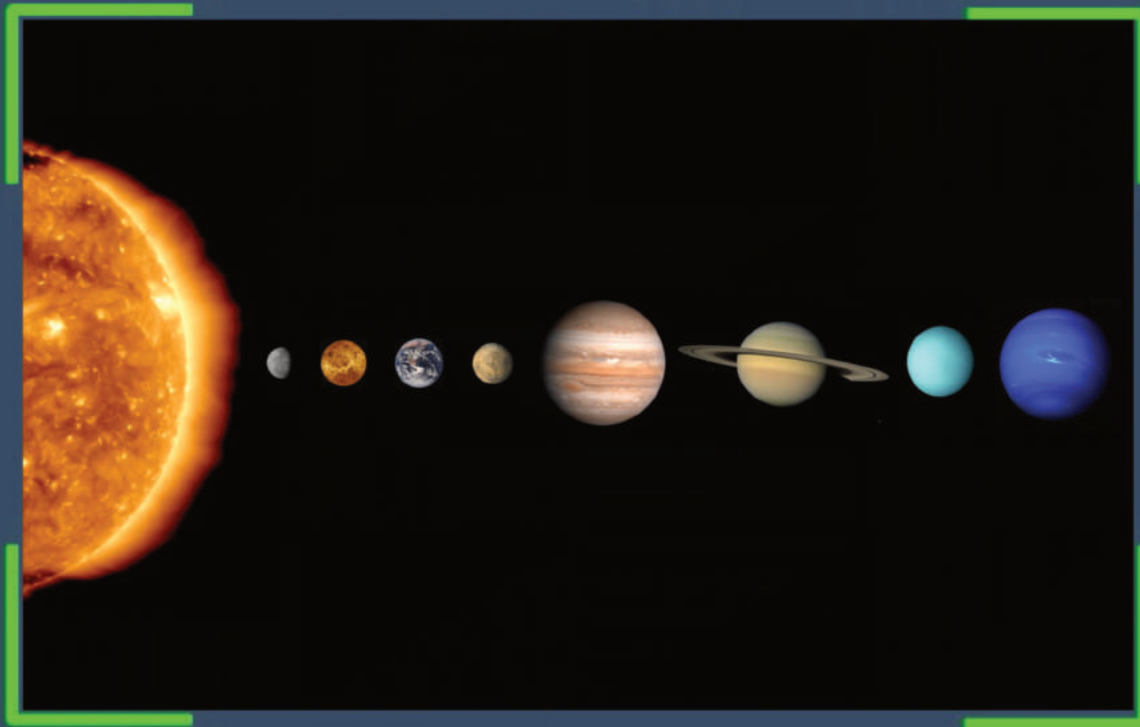


Háu! Mas'wíchaša hemácha na Nasúla emáçiyape ló.
Na takúku Wamákhã Optáye kiŋ eçhíyatanhan oçhíçiyakapi waçhíŋ.



GoAnimate FOR SCHOOLS

Wamáħa Optáye uħkýapi kiġ lé Wí kiġ é na
wamáħa eyá aóhomni áye kiġ iyúpħaħ uħķápi.



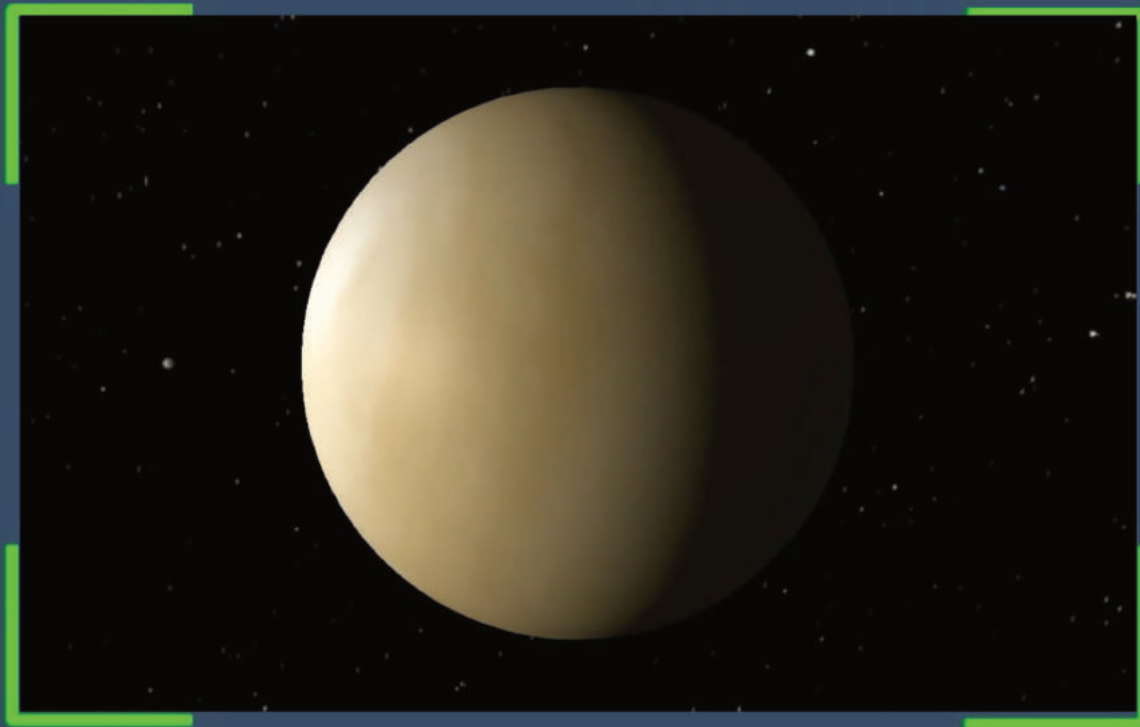
GoAnimate FOR SCHOOLS

Wamákħa šaglǫǫaŋ yukhín na lená é:



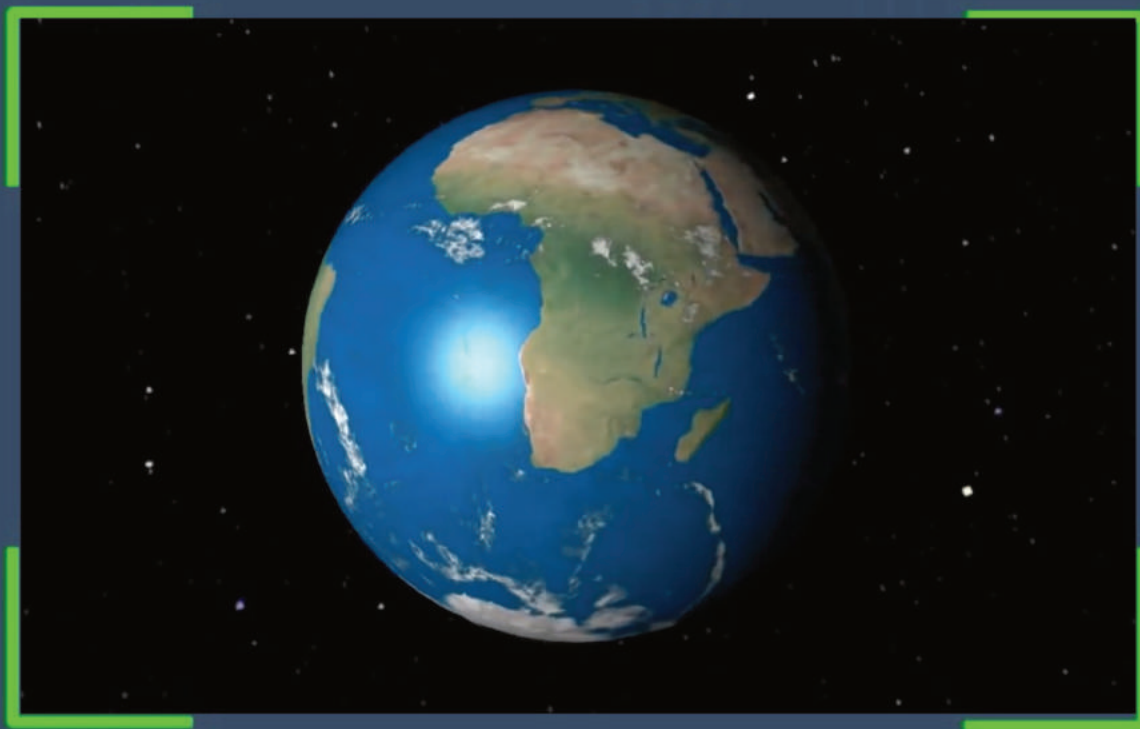
GoAnimate FOR SCHOOLS

“Mercury” eyápi kiη hé



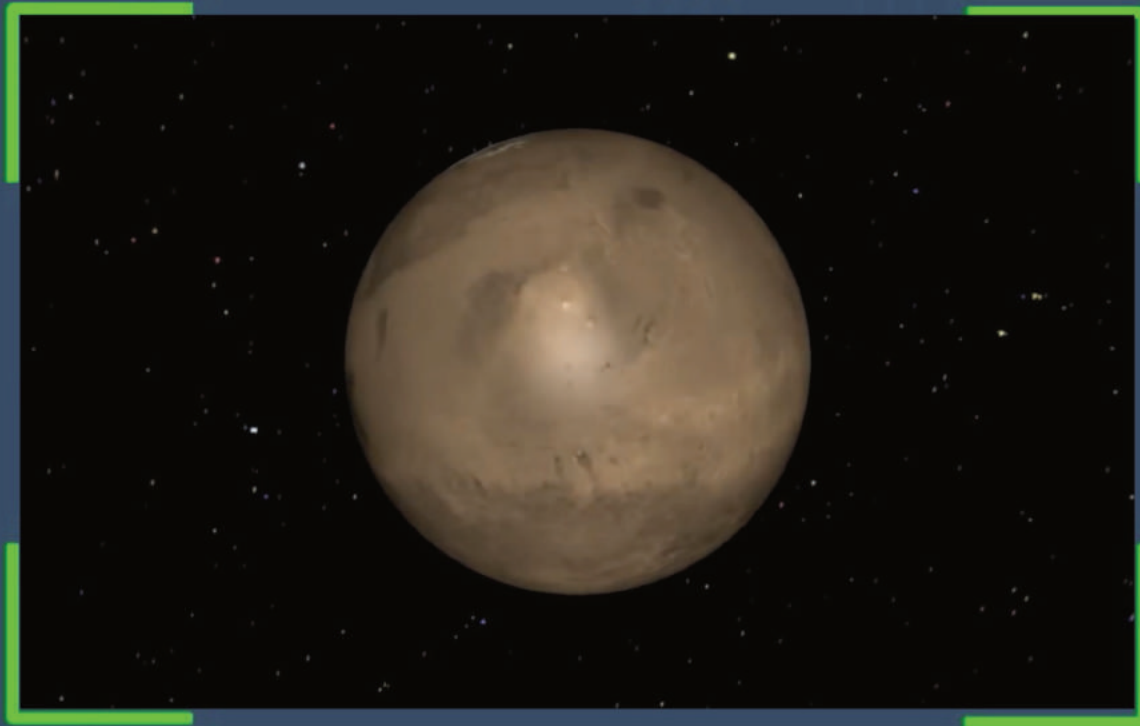
GoAnimate FOR SCHOOLS

“Venus” eyápi kiŋ hé



GoAnimate FOR SCHOOLS

Makhá wan̄ éi un̄k'ún̄pi kin̄ lé



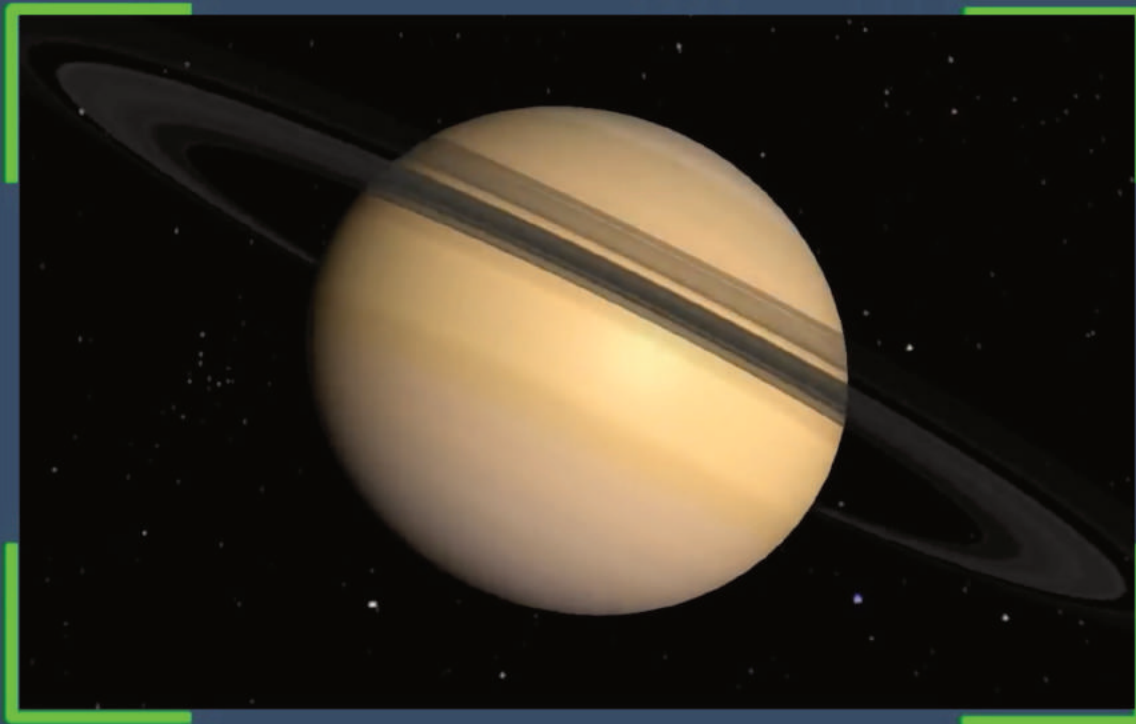
GoAnimate FOR SCHOOLS

“Mars” eyápi kiη hé



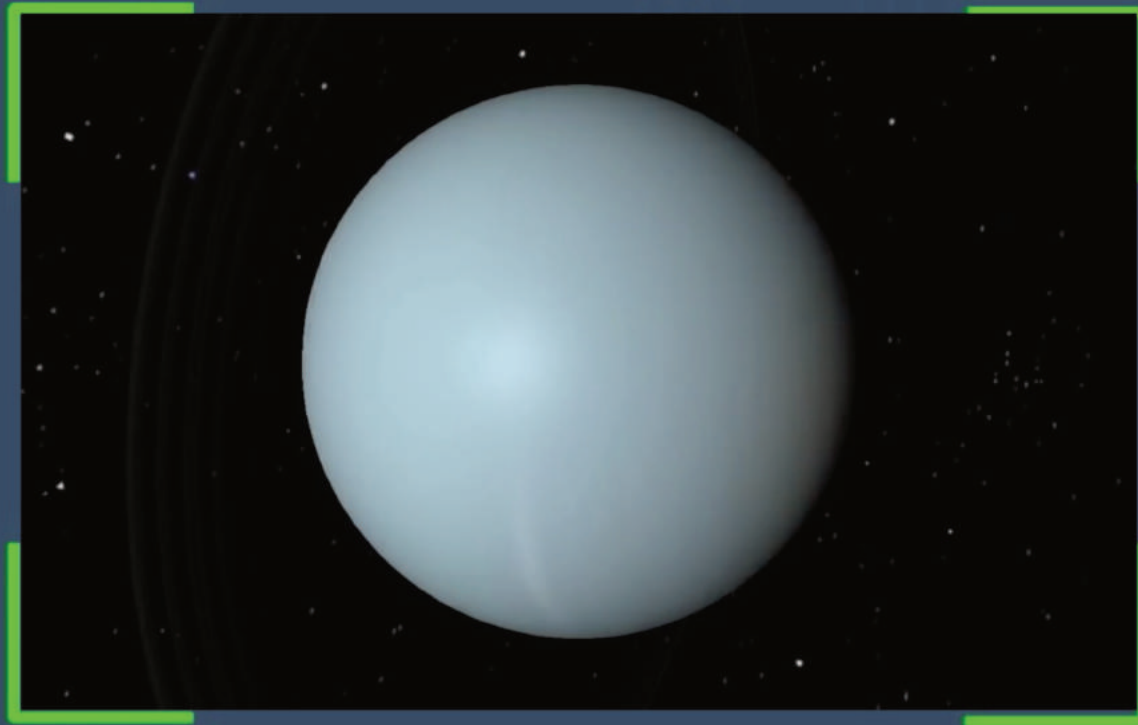
GoAnimate FOR SCHOOLS

“Jupiter” eyápi kiŋ hé



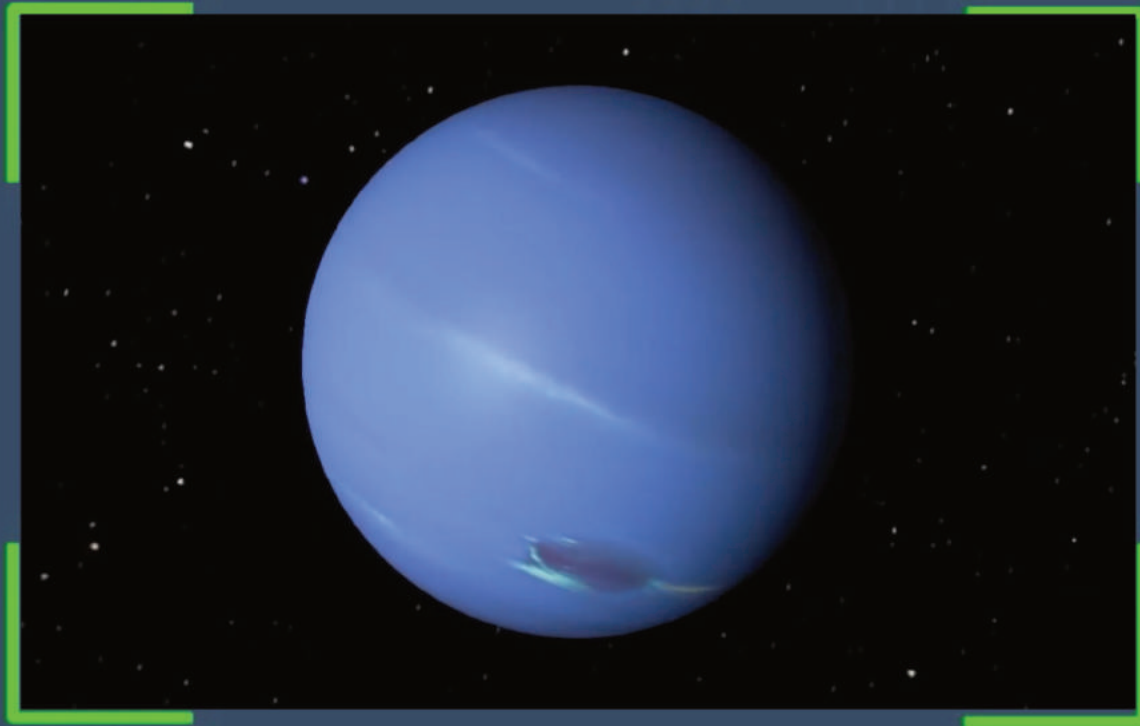
GoAnimate FOR SCHOOLS

“Saturn” eyápi kiṅ hé



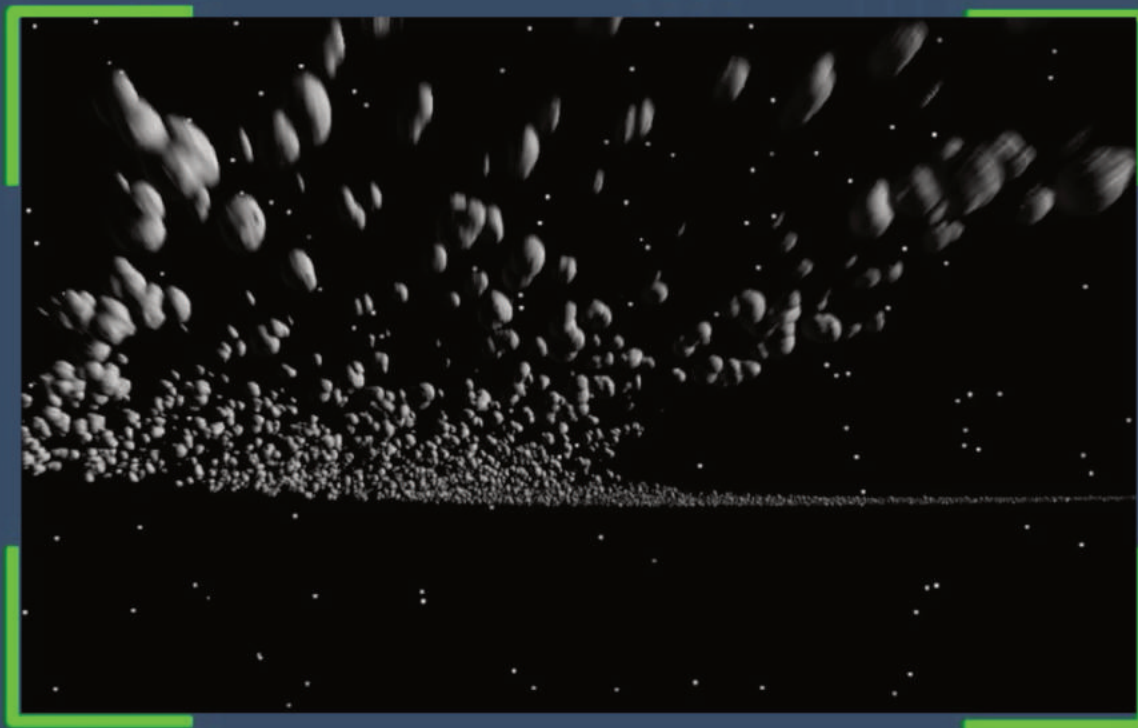
GoAnimate FOR SCHOOLS

“Uranus” eyápi kiŋ hé



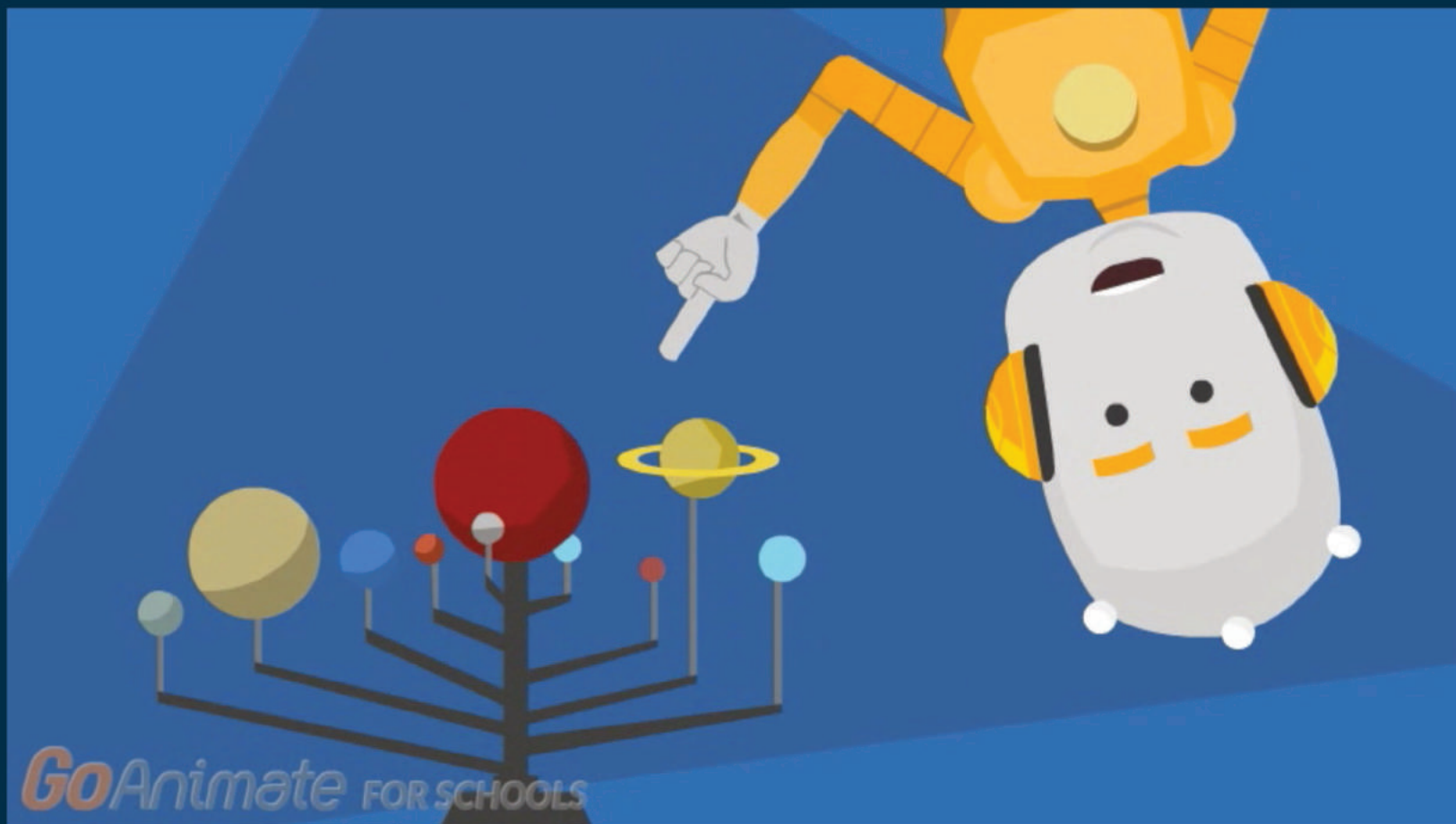
GoAnimate FOR SCHOOLS

“Neptune” eyápi kiŋ hé



*Go*Animate FOR SCHOOLS

Na ošpáye henáujs iyókogna, ínjan oštéštaka líla óta hiyéye.



Áta khilí yeló! Wamákħa Optáye unkítħawapi kiŋ áta pánġeċe ló.



Hó čha waŋkátakiya étuŋwaŋpi na ečháš akhé kúpi naháŋ akhé
Nasúla Wóslolye eyápi waŋží yunáyečhičhíyapi kte! Nasúla miyé yeló.