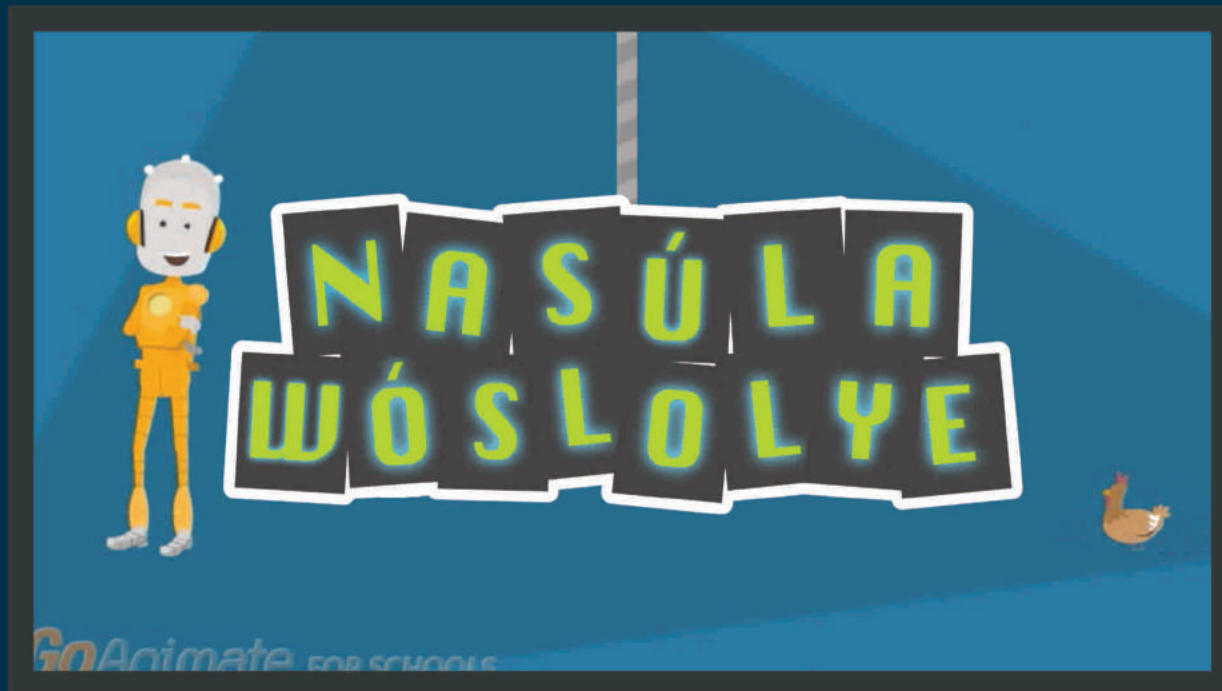


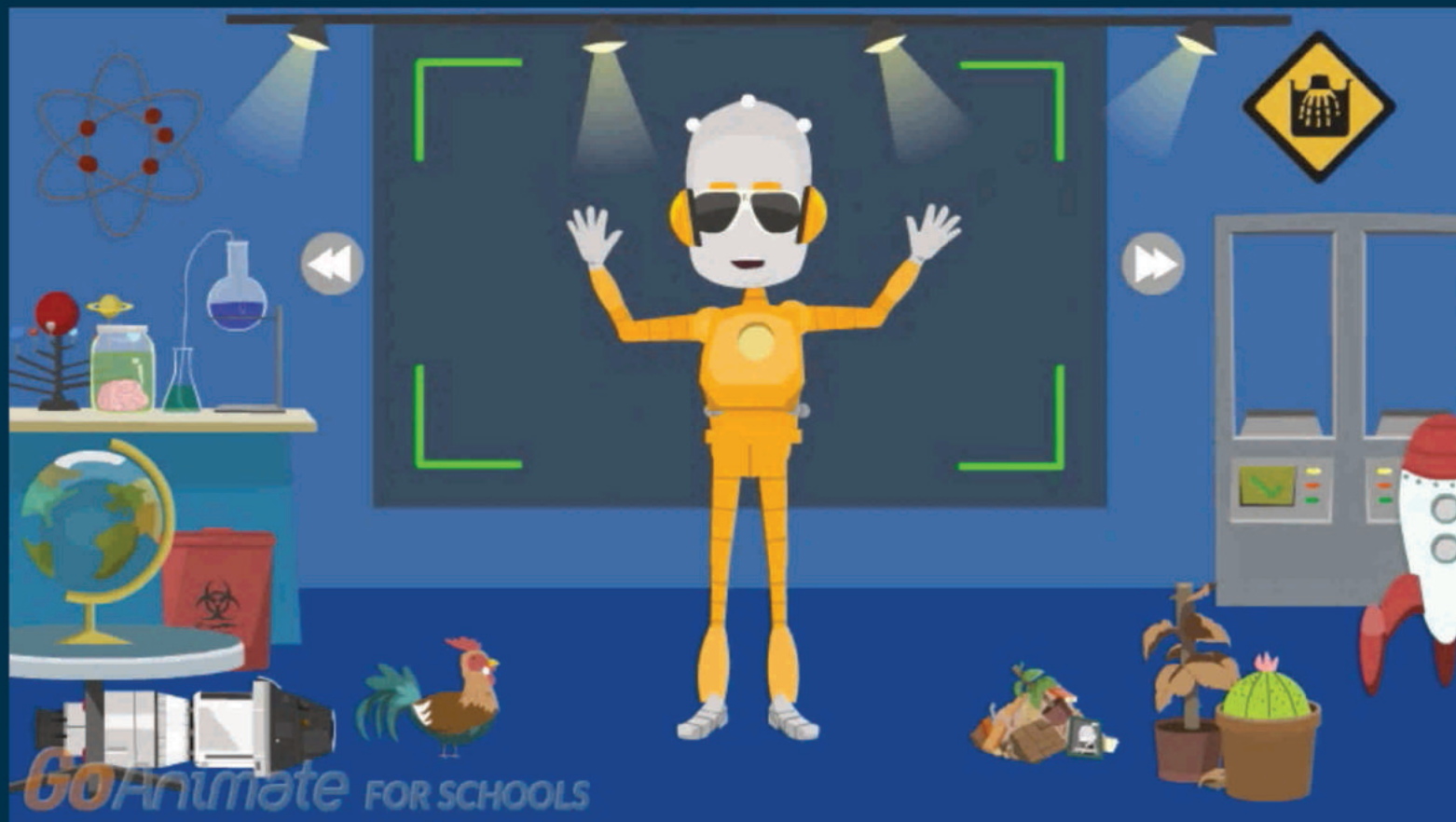
**NASÚLA  
WÓSLOLYE**

**WÍ KINHÁN**

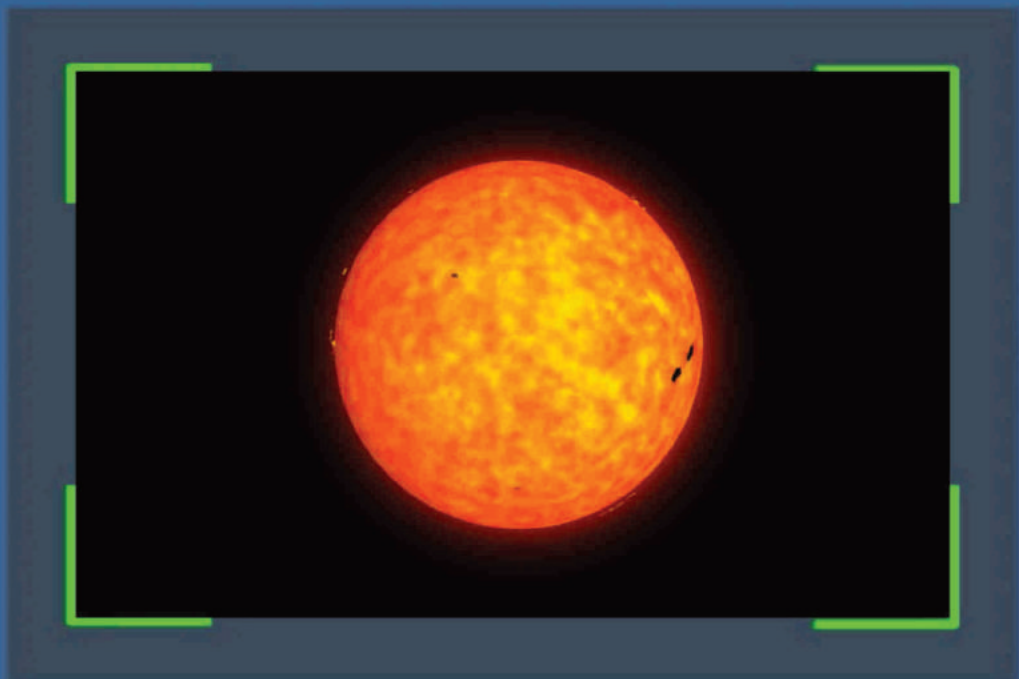
GoAnimate



Wí Kĩnhán

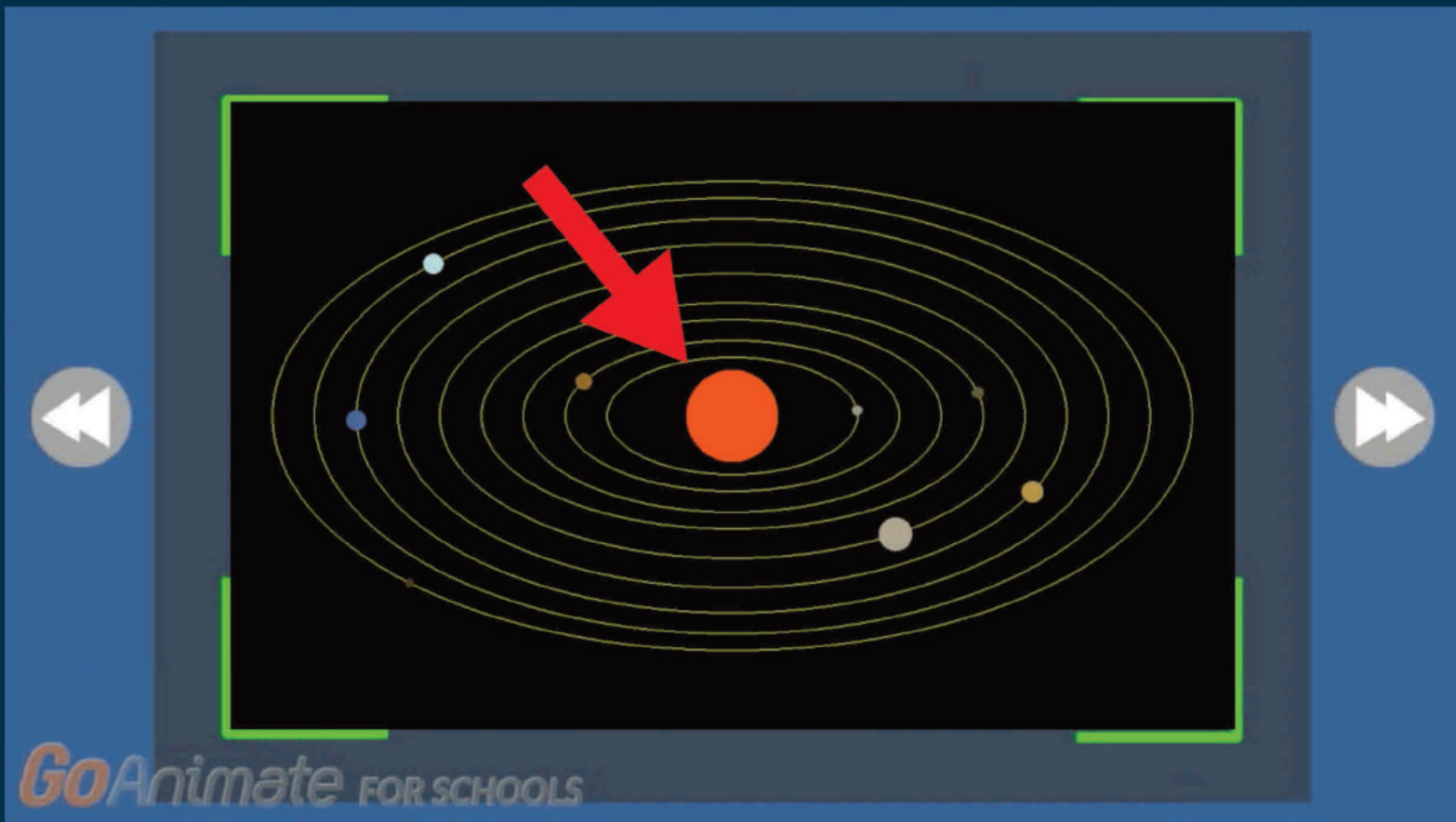


Háu! Mas'wíchaša hemácha na Nasúla emáçiyape ló.



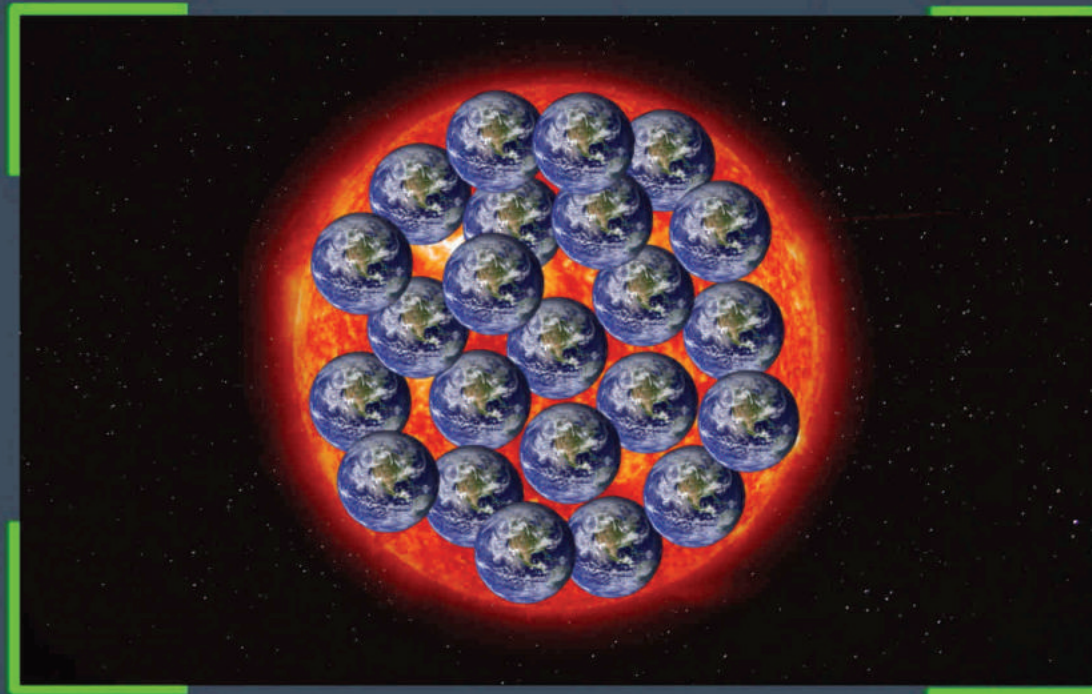
*GoAnimate* FOR SCHOOLS

Na Wí kiŋ ečhíyatanhaŋ takúku očhíčiyakapi wačhíŋ.



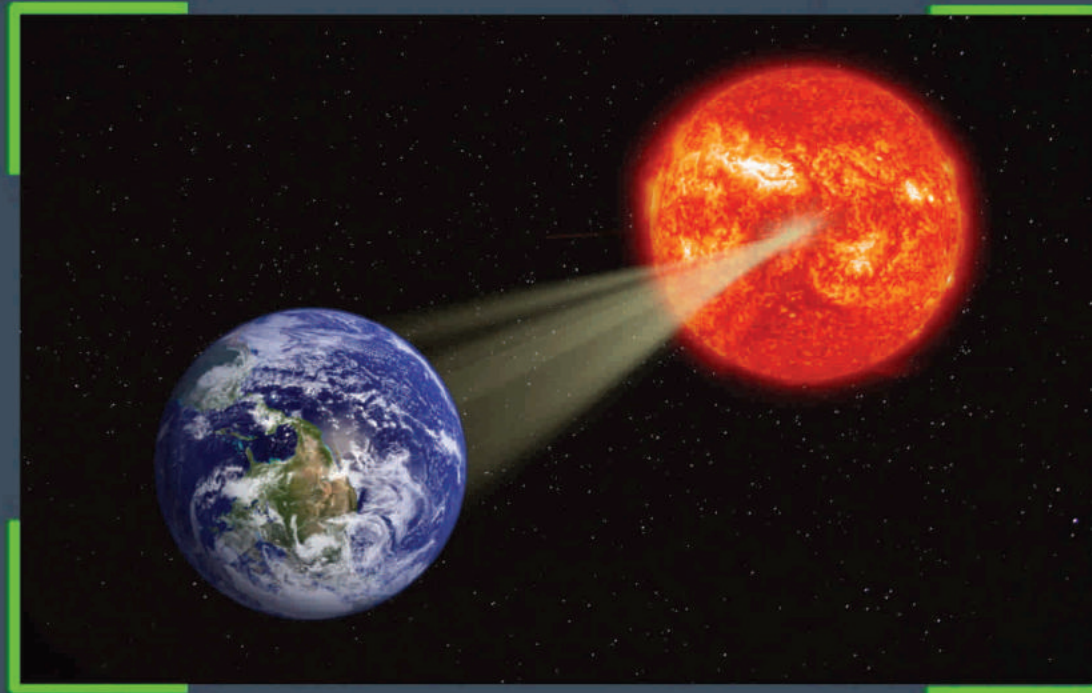
Wamáħa Optáye waŋ éł uŋkóthipi kiŋ léł Wí kiŋ čhokáta láħčij hé.





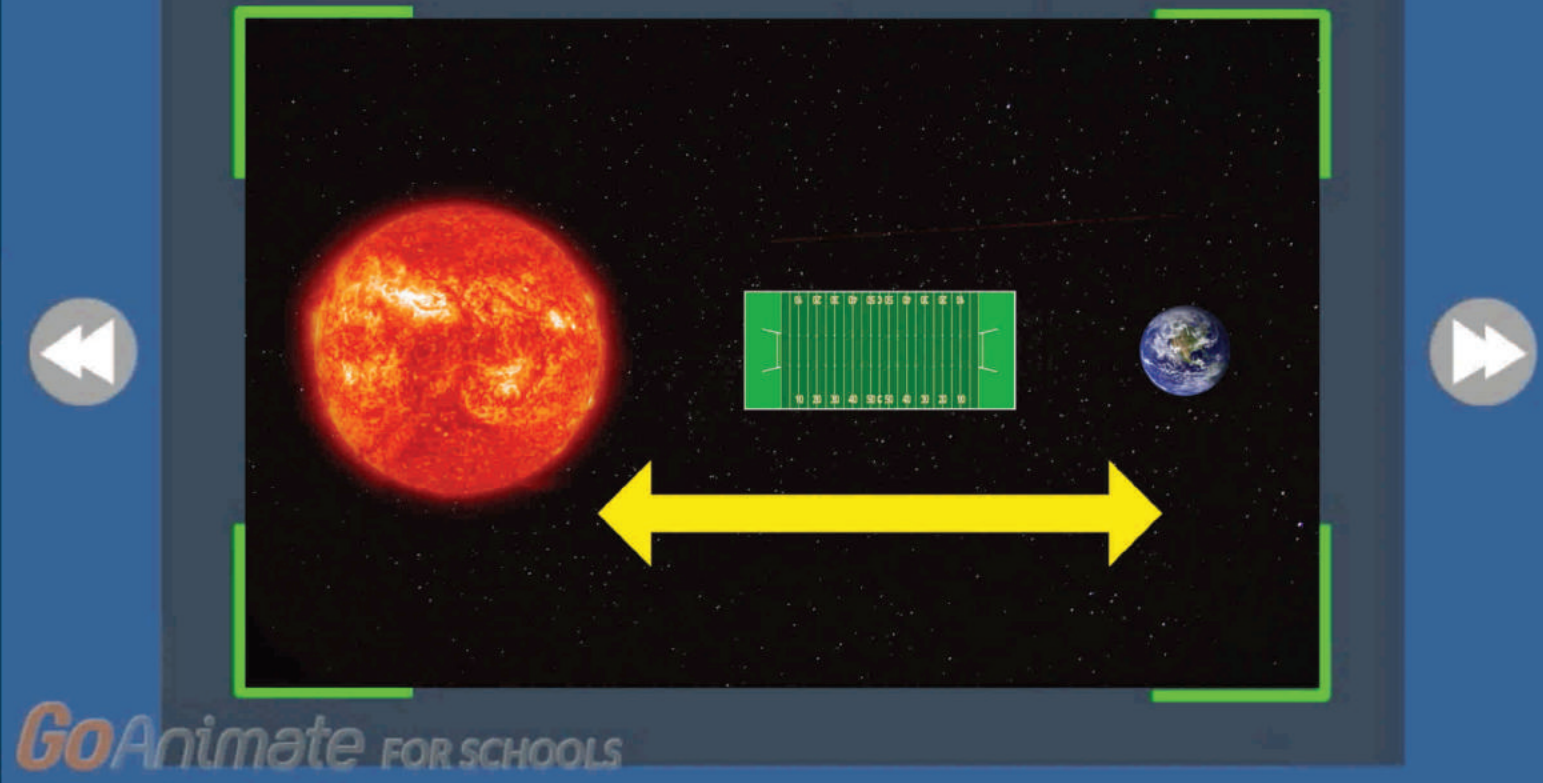
GoAnimate FOR SCHOOLS

Imáhel Makhá kħoktášiča sánm iyáya ognág-phičá yeló.



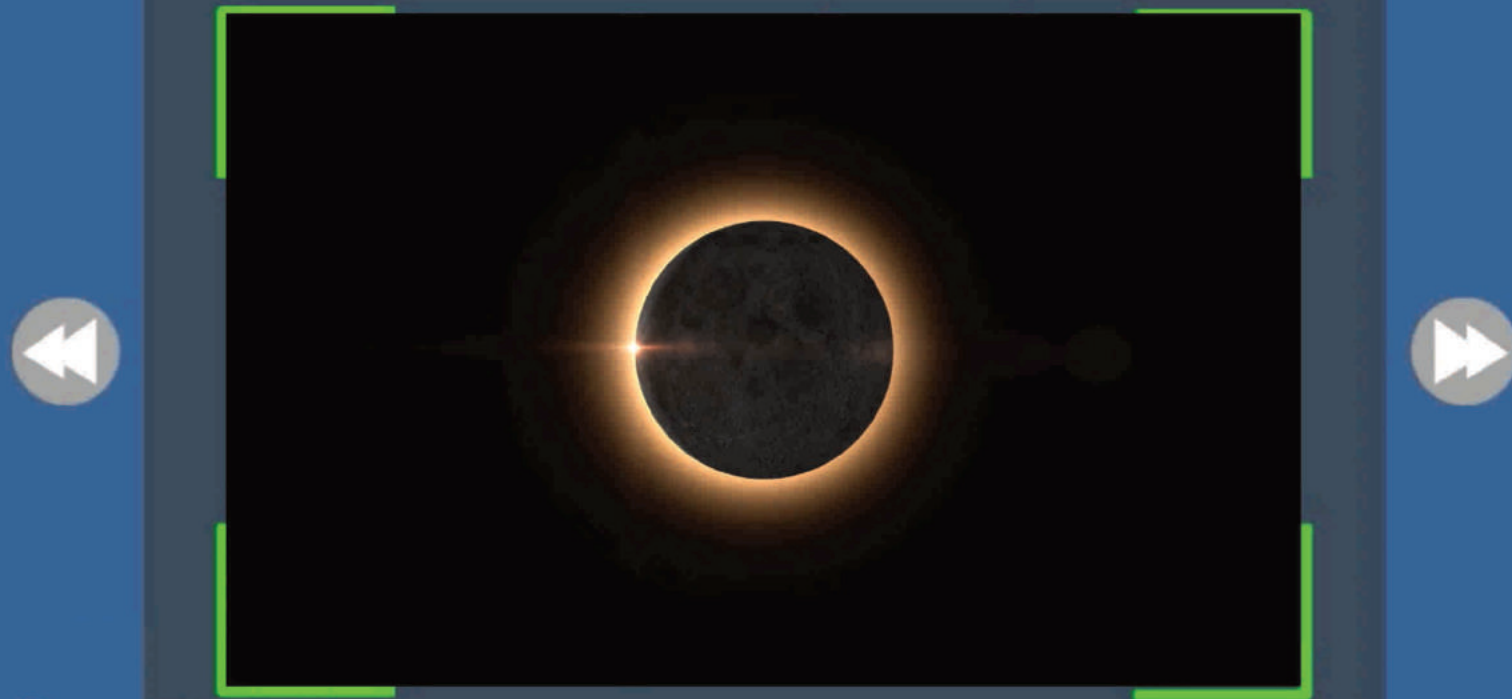
GoAnimate FOR SCHOOLS

Wí kiŋ hetáŋhaŋ ožáŋžaŋ kiŋháŋ oápĥe čík'ala  
šaglóğaŋ wahéhaŋyaŋ ú na heháŋl hihúŋni.



Wí na Makhá kiŋ iyókogna, síŋhapa oškáte oyánke khotáŋiŋa  
sánm iyáya ipáhlal égle phičá.





GoAnimate FOR SCHOOLS

“Wí ináħma” eyápi čháŋna, Haŋhépi Wí kiŋ itħókab khušéya hiyáye.



Hé slolyé phičá yeló.



Éyaš Wí kiŋ uŋ uŋnípi čha líla phiúŋkilapi.



Čha haŋmánípi šni yo! Na ečháš kúpi na akhé Nasúla Wóslolye eyápi húnĥ  
yunáyečhičiyapi kte ló.