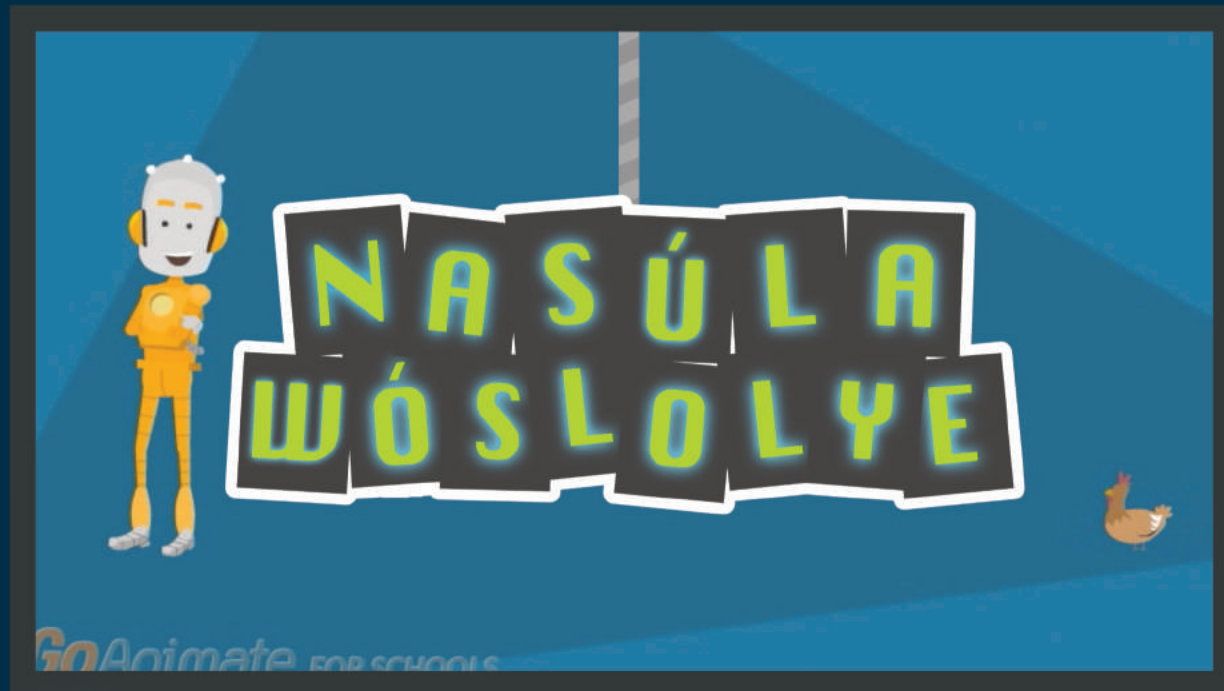


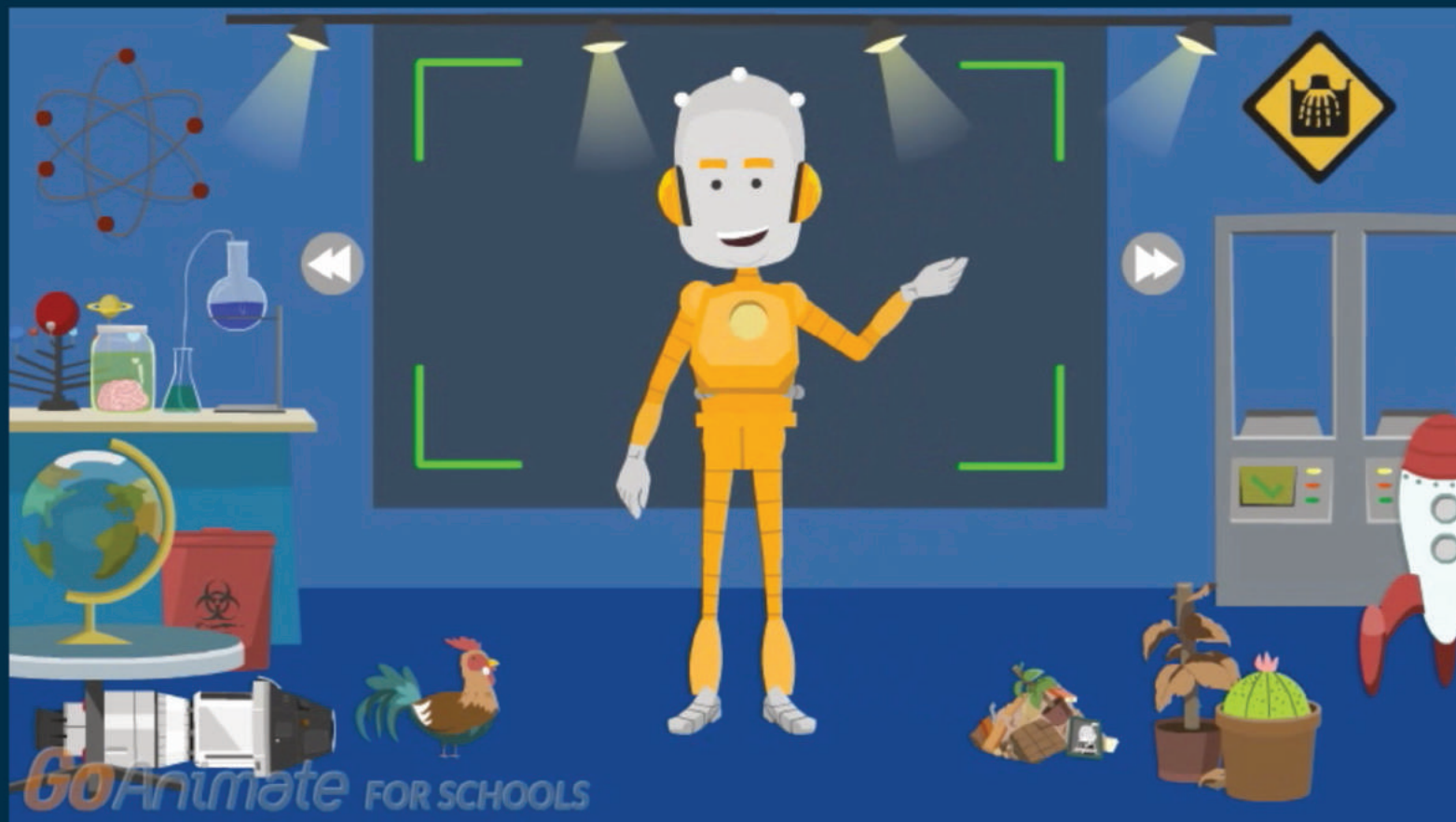
**NASÚLA  
WÓSLOLYE**

**Čhanťé Kĩnhán**

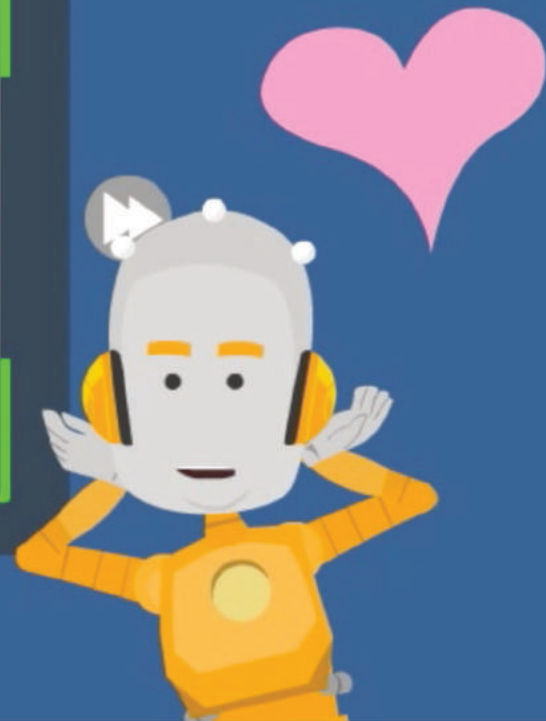
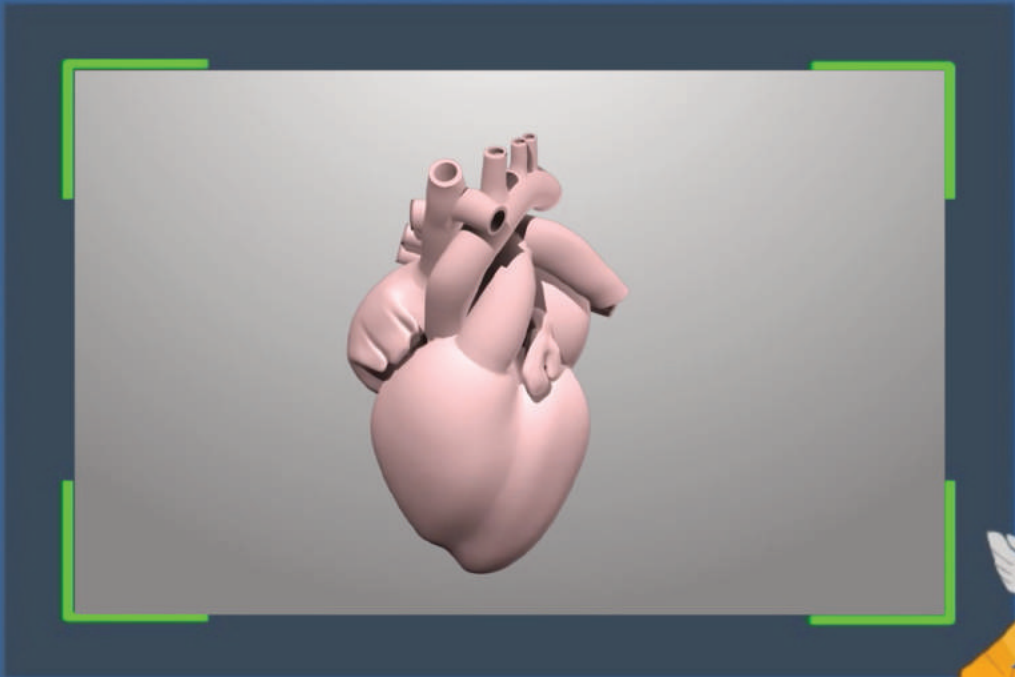




Čhanťé Kīnhán

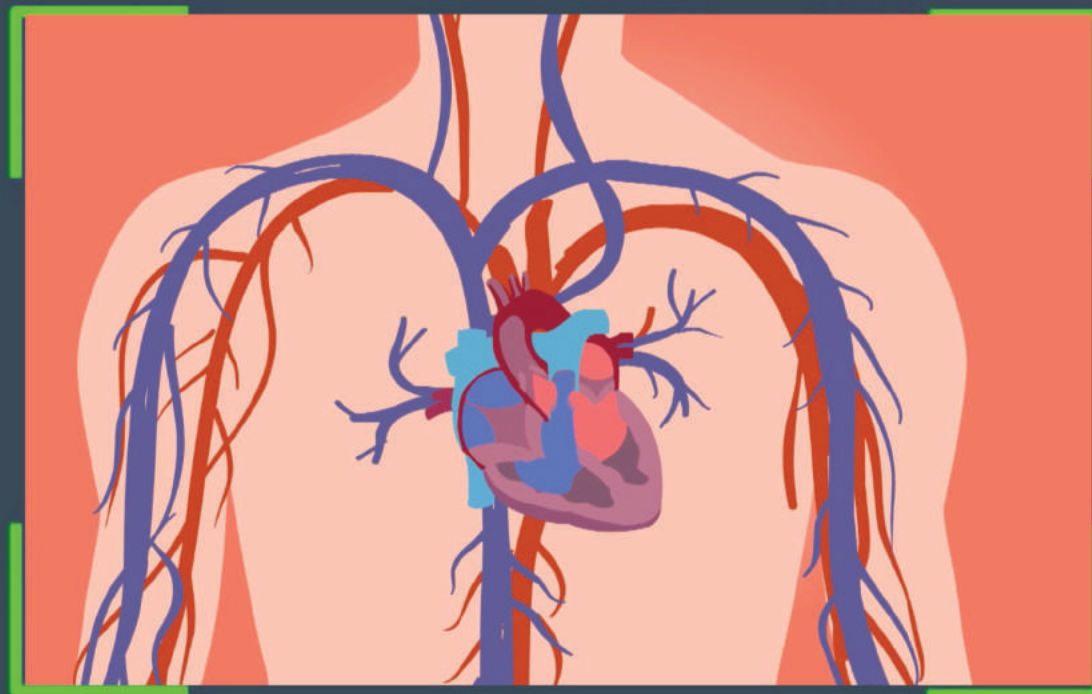


Háu! Mas'wíchaša hemácha na Nasúla emáçiyape ló.



*GoAnimate* FOR SCHOOLS

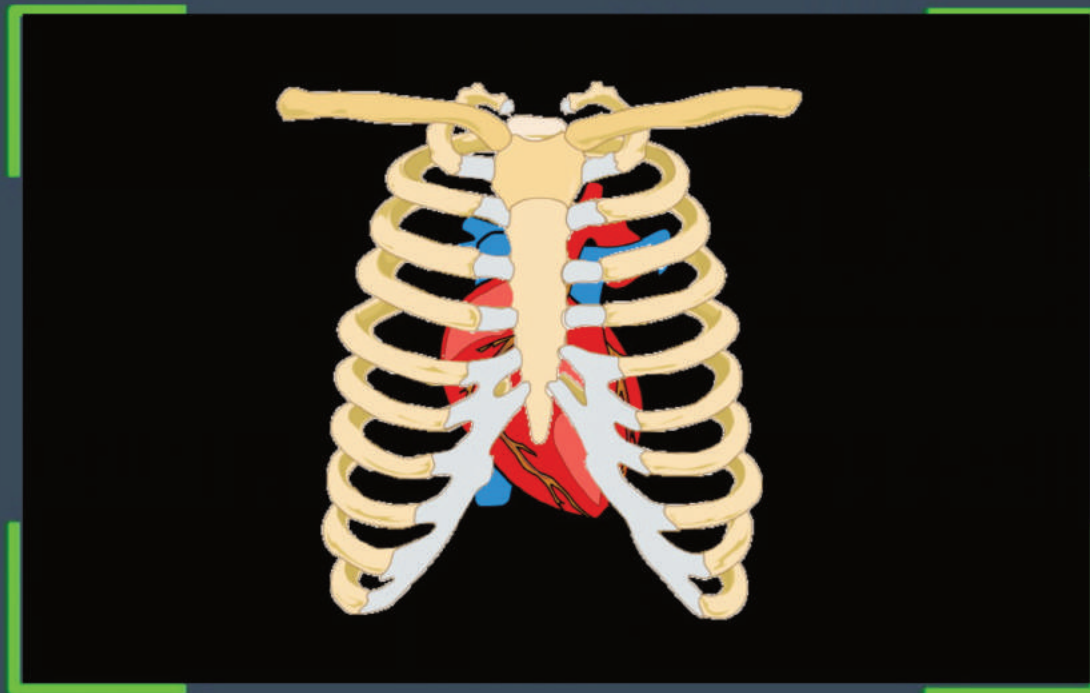
Na čhaŋté kiŋ ečhíyatanhan takúku očíčiyakapi wačhín.



GoAnimate FOR SCHOOLS

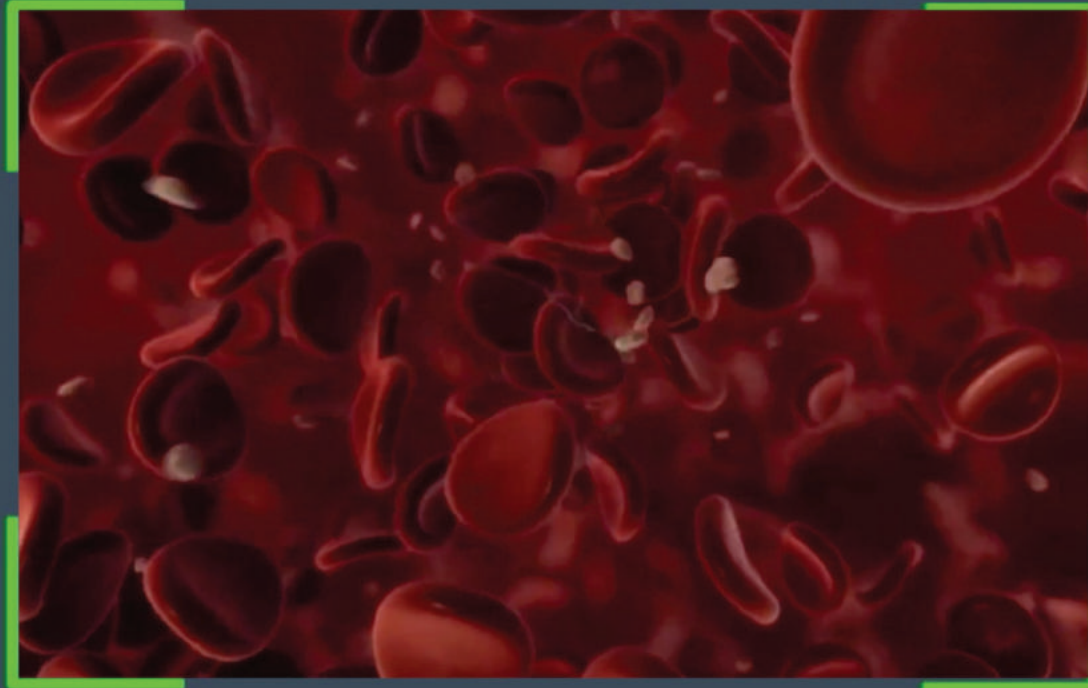
Ункiтħаŋĉħаŋпи ёл, ĉħаŋтё киŋ iyóтаŋ waĉhíŋuŋkiyapi.





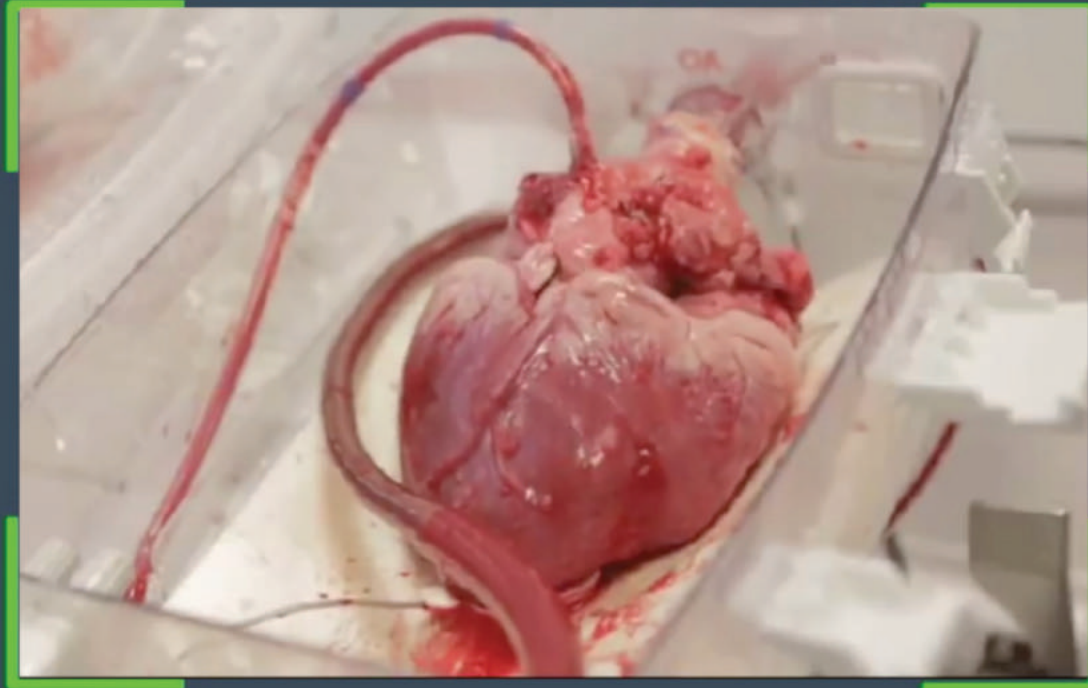
GoAnimate FOR SCHOOLS

Čhaŋté kiŋhán makhú mahél unglúhapi nahán  
thučúhu kiŋ okáške s'e khušéya hé.



GoAnimate FOR SCHOOLS

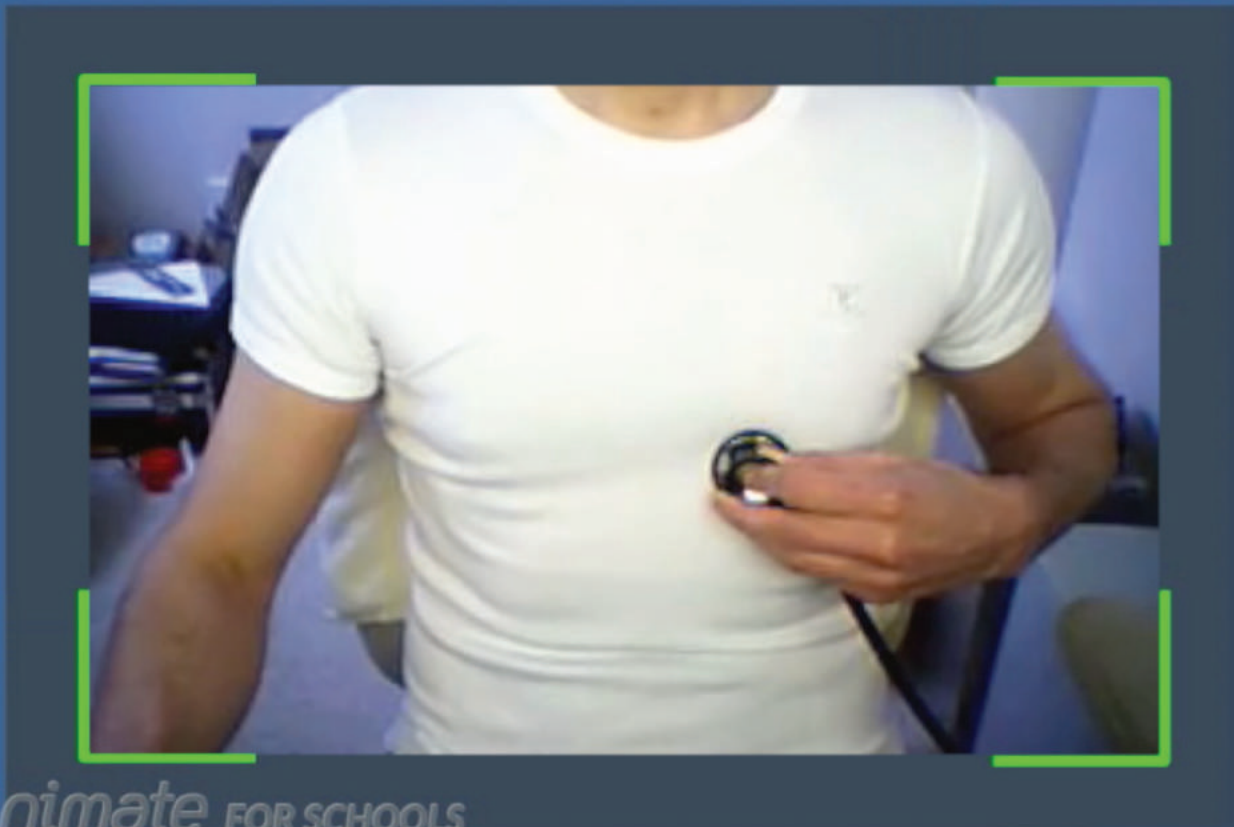
Čhaŋté kiŋ wé kiŋ uŋkítħaŋčhaŋpi éI patháš kalúsye.



GoAnimate FOR SCHOOLS

Héčhuŋ čháŋna nayéħ'uŋ oyákihi. Lé “čhaŋtíyapħapi” eyápe ló.





GoAnimate FOR SCHOOLS

Waákisniya kiŋ táku waŋ “čhaŋté ináħ’uŋ” eyápi čha yuhápi, na uŋ šna čhaŋté kiŋ anániġoptaŋpi okíhipi. Buyéla šna čhaŋtíyanipħa.



*GoAnimate* FOR SCHOOLS

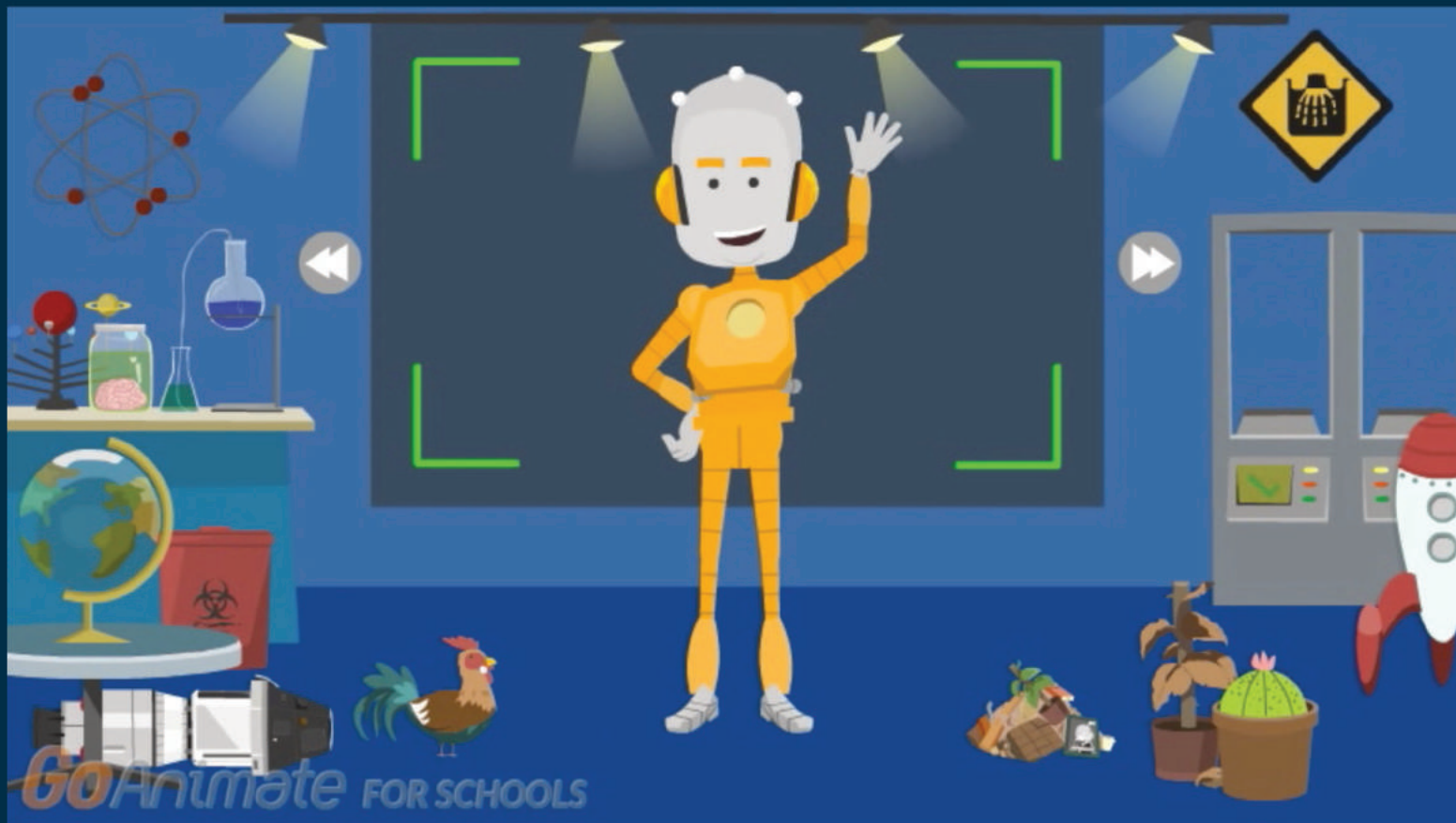


*GoAnimate* FOR SCHOOLS

Ní waúŋ s'elécheča!



Niyěš, čhaŋtíyaphapi ayákiblezapi he?



Iyúthapi na hehánl kúpi na akhé Nasúla Wóslolye  
eyápi húnh yunáyečhičhiyapi kte ló.