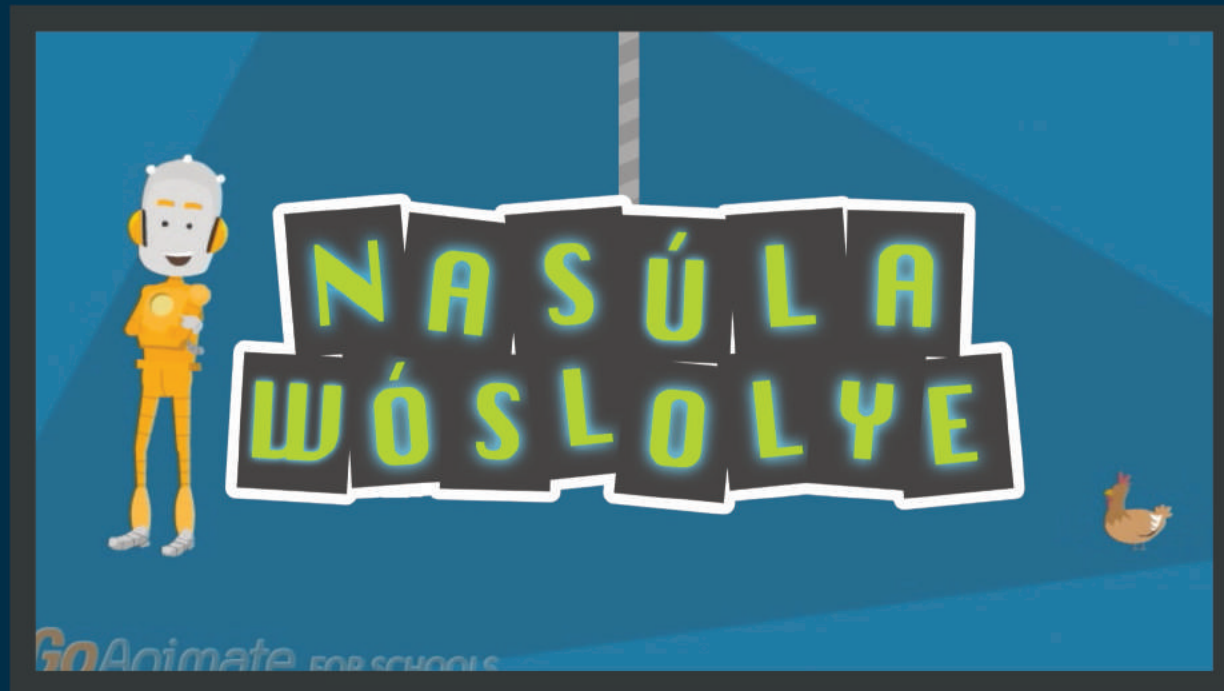


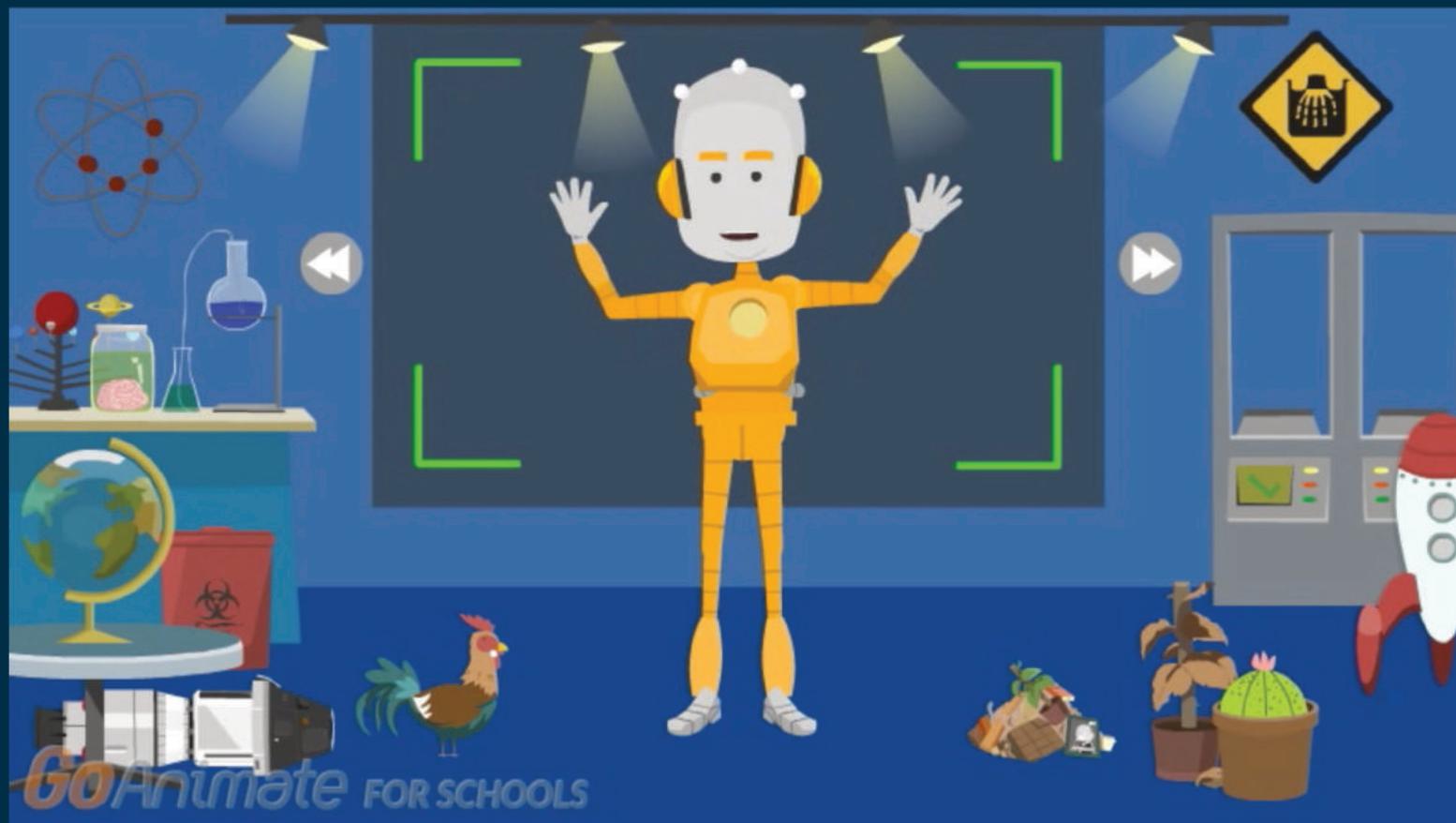
**NASÚLA
WÓSLOLYE**

Wagmíza

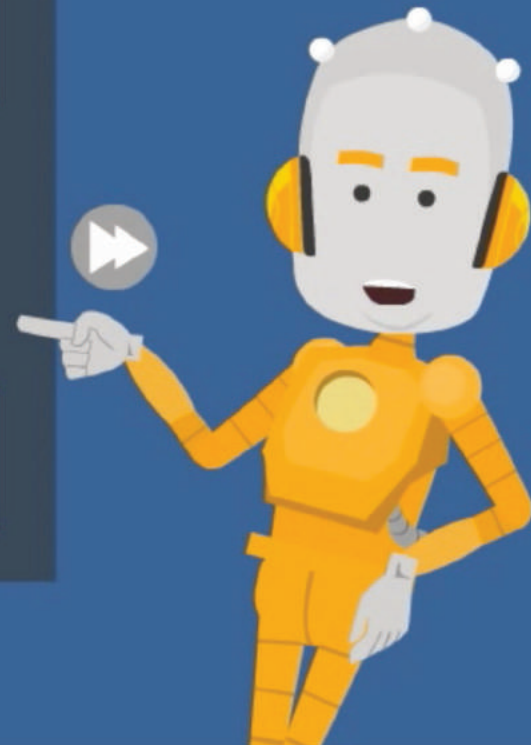
GoAnim... school



Wagmíza



Háu! Mas'wíchaša hemácha na Nasúla emáçiyape ló.



GoAnimate FOR SCHOOLS

Na waggmíza ečhíyatanhan takúku očhíčiyakapi wačhín.



GoAnimate FOR SCHOOLS

Wagmíza hučhán kiŋ él wahúwapa hená aíchaḡe,
na áwičakḡeya wanáhča héčha.



GoAnimate FOR SCHOOLS

Na čó hená áwičakħeya sú héča.



GoAnimate FOR SCHOOLS

Wahúwapa wanží éł eyášna čhó opáwiŋge šaglógan aíkhowake,
óhiye akéšakpe éł.



GoAnimate FOR SCHOOLS

Wagmíza kiňhán lila ótakiya ilágye phičá.

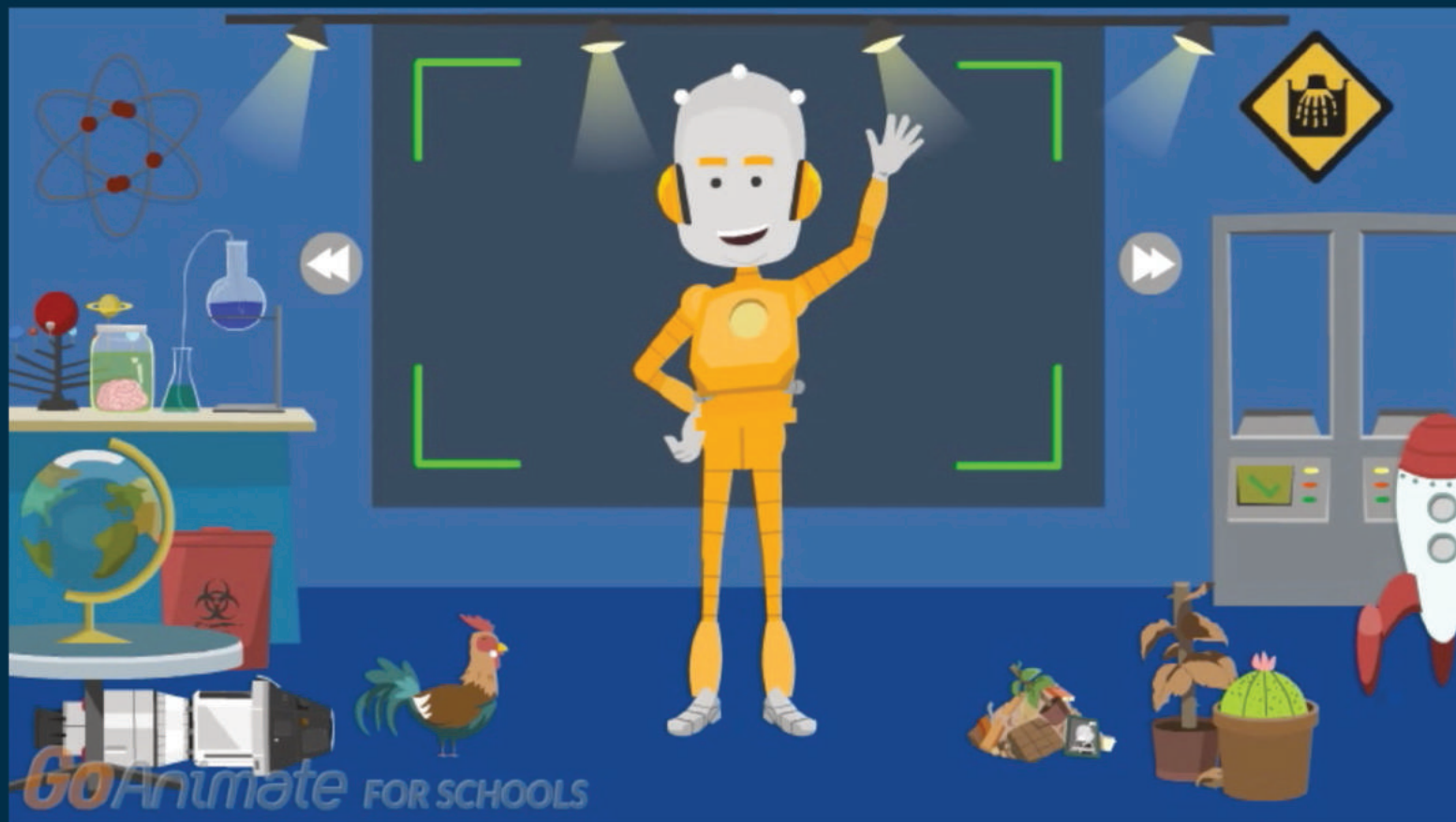


GoAnimate FOR SCHOOLS

Na oówa tǰogtǰogye ičháǰye phičá: sápa, šá, ská, naháǰ zí.



Čha hená iyúkčan po/pe!
Wagmíza yul-áwašt eyelaka he?



Akhé wagníza yátapi kíj, táku kíj hená kiksúyapi, na echáś kúpi na akhé Nasúla Wóslolye eyápi húñh yunáyečhičhiyapi kte ló.