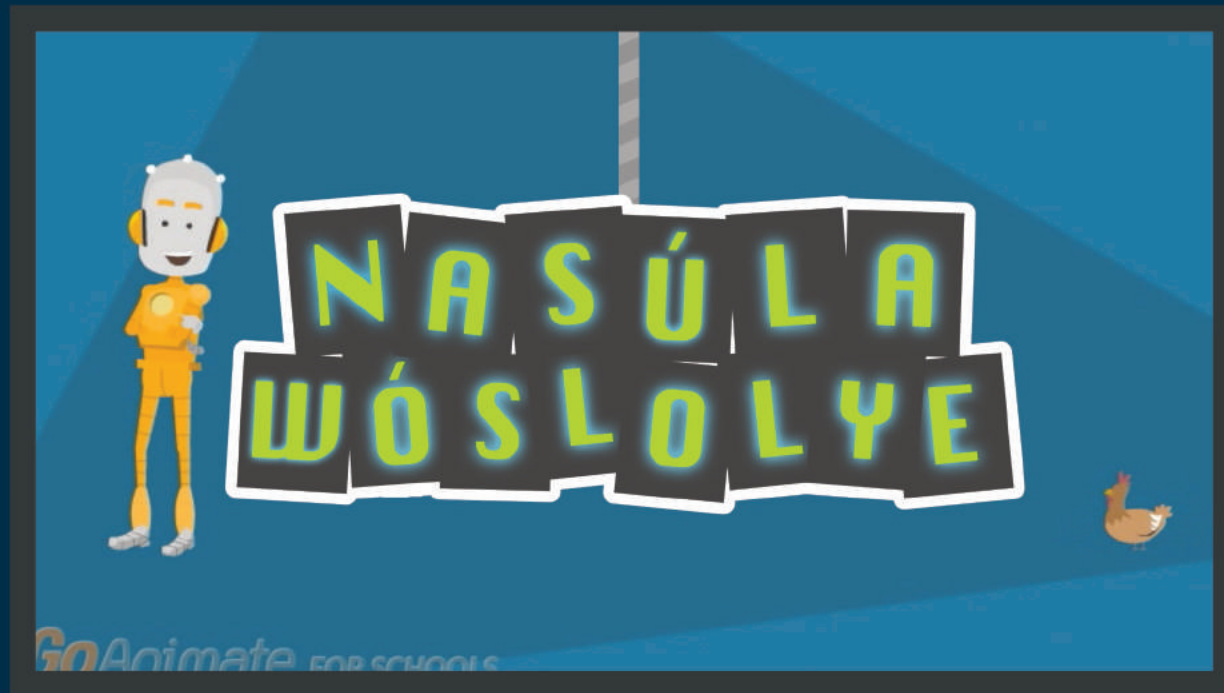


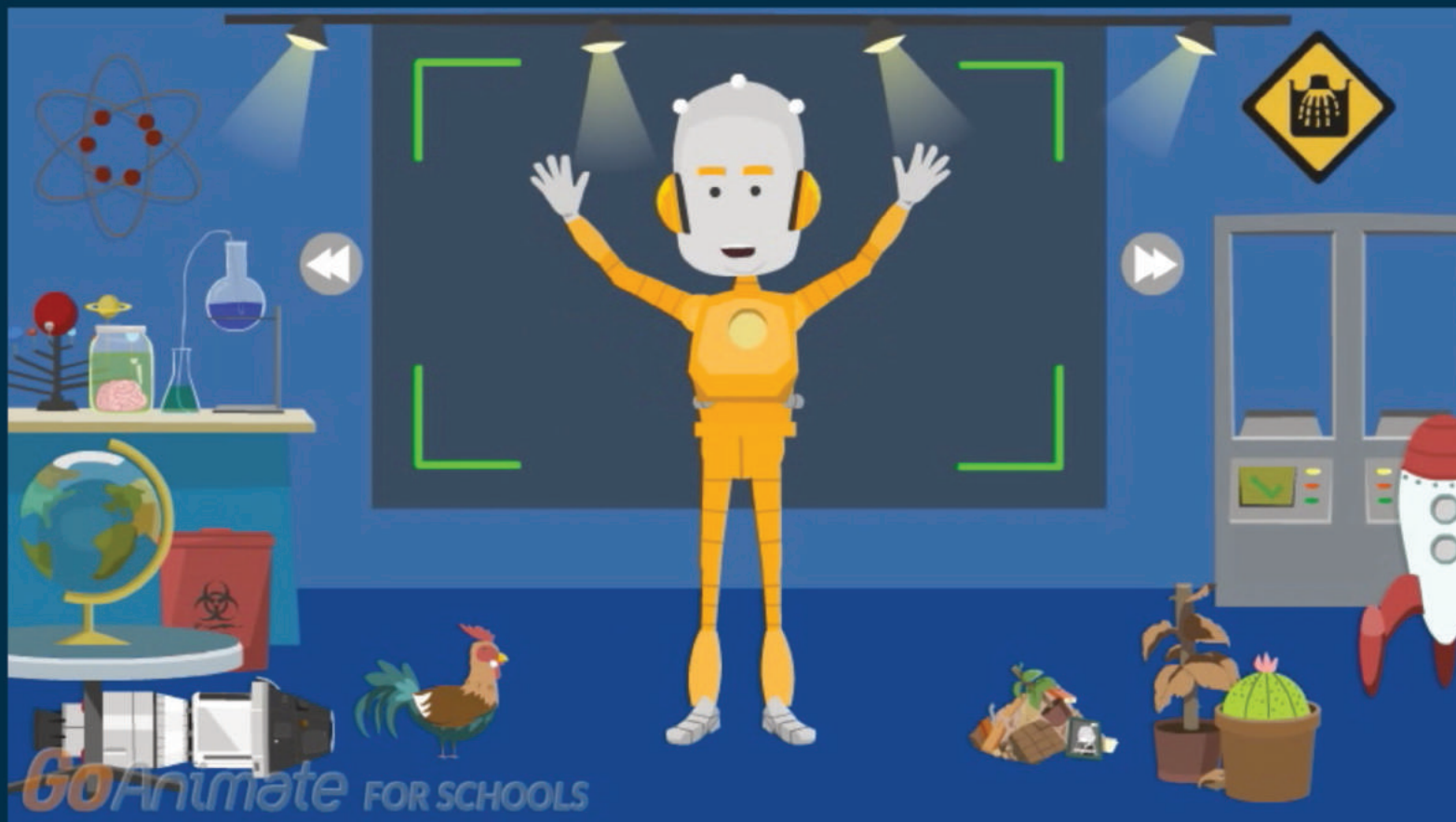
**NASÚLA  
WÓSLOLYE**

**Takú un Waáunblezapi kin**

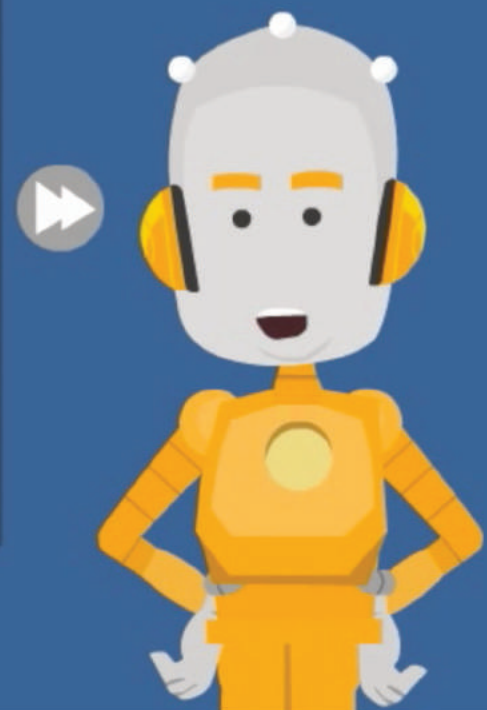
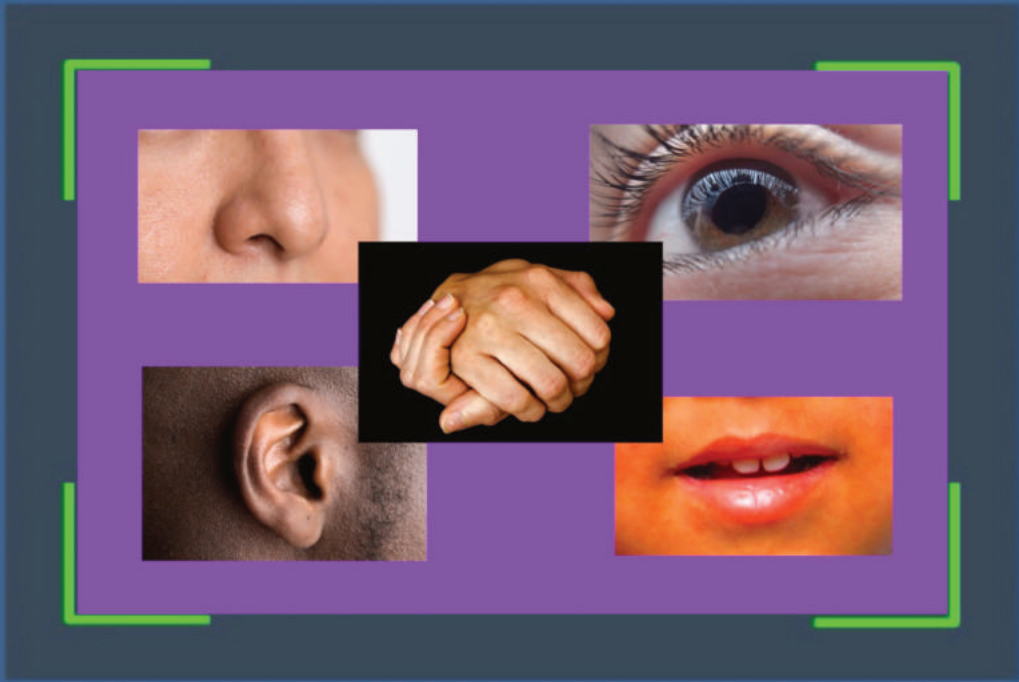
GoAnimate FOR SCHOOLS



Takú un̄ Waáun̄blezapī kin̄

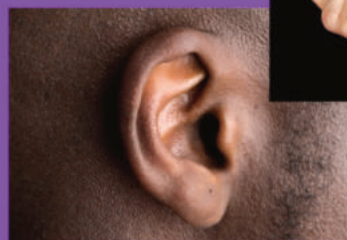
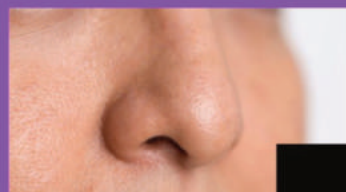


Háu! Mas'wíchaša hemácha na Nasúla emáçiyape ló.



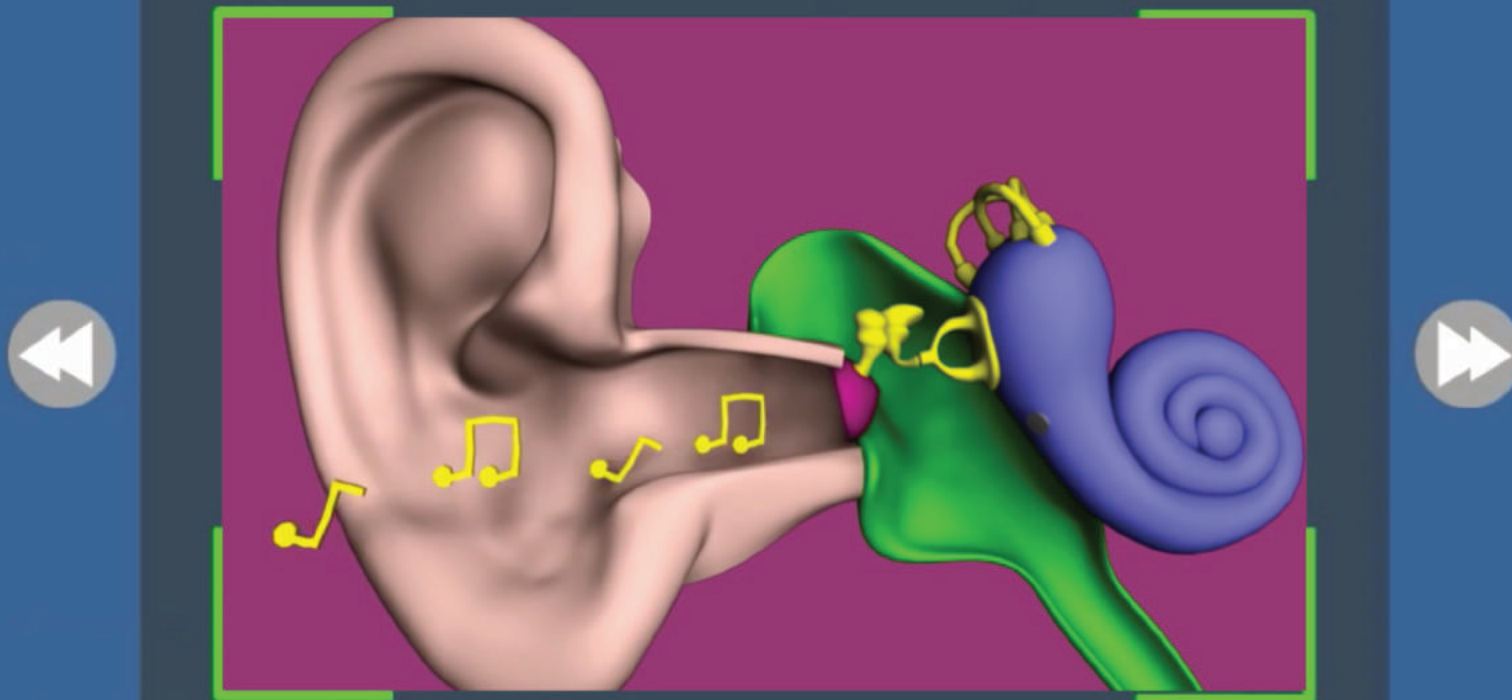
GoAnimate FOR SCHOOLS

Na takúku unkítšančanpi kin ečhíyatanhan očhíčiyakapi wačhín.



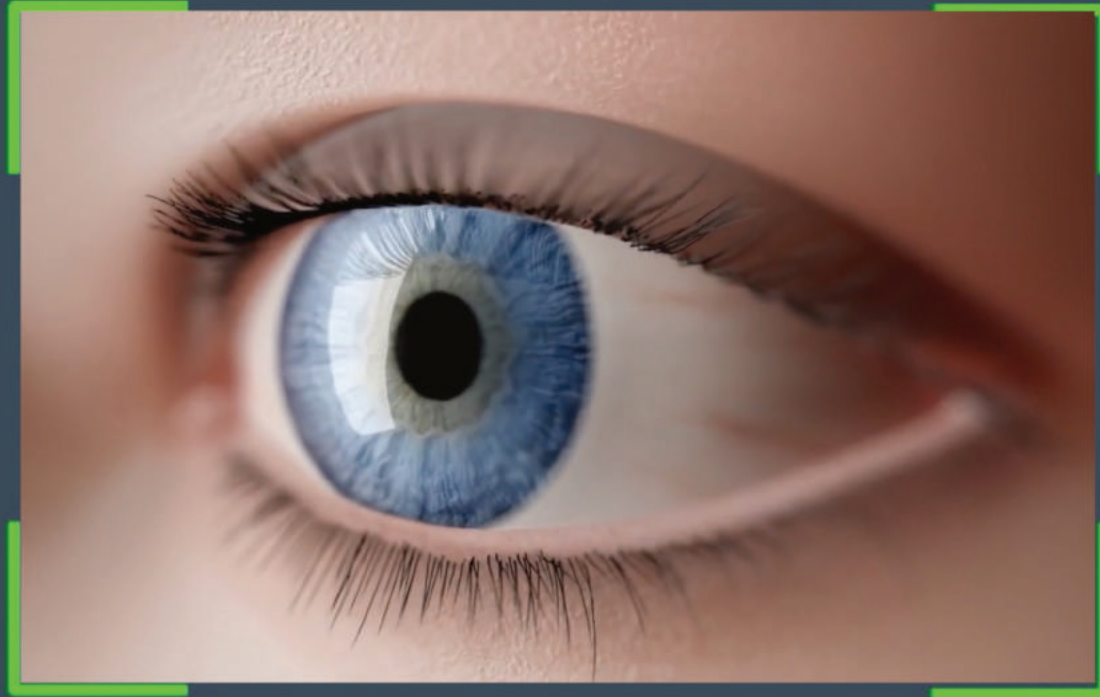
GoAnimate FOR SCHOOLS

Tuwé kiŋ iyúha kiníl táku záptaŋ uŋ waábležapi.



GoAnimate FOR SCHOOLS

Nún̄ḡe un̄ šna wanáun̄h̄'un̄pi.



*GoAnimate* FOR SCHOOLS

Ištá uŋ šna wawáŋuŋyaŋkapi.



Πῆσú ηη ḡna waóuηmnapi.





GoAnimate FOR SCHOOLS

Napé un šna waéunpathanpi.



Na í na čheží uŋ šna wol-uŋkiyuth̄api.



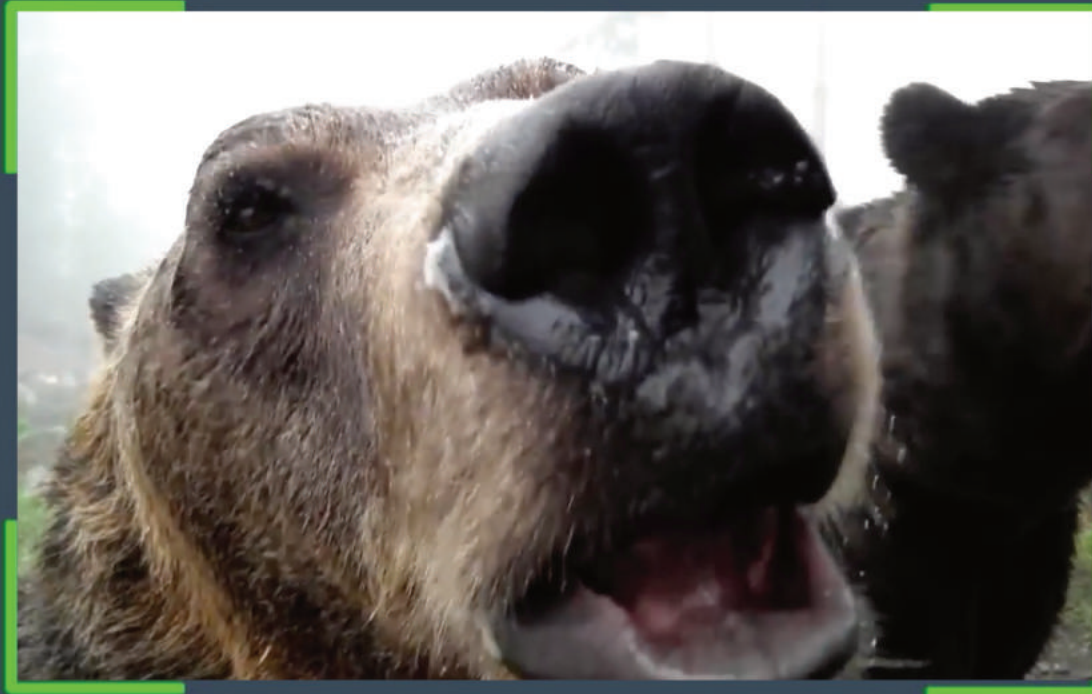
*GoAnimate* FOR SCHOOLS

Lená uŋ uŋkínasulapi kiŋ waáuŋkičiblézapi.



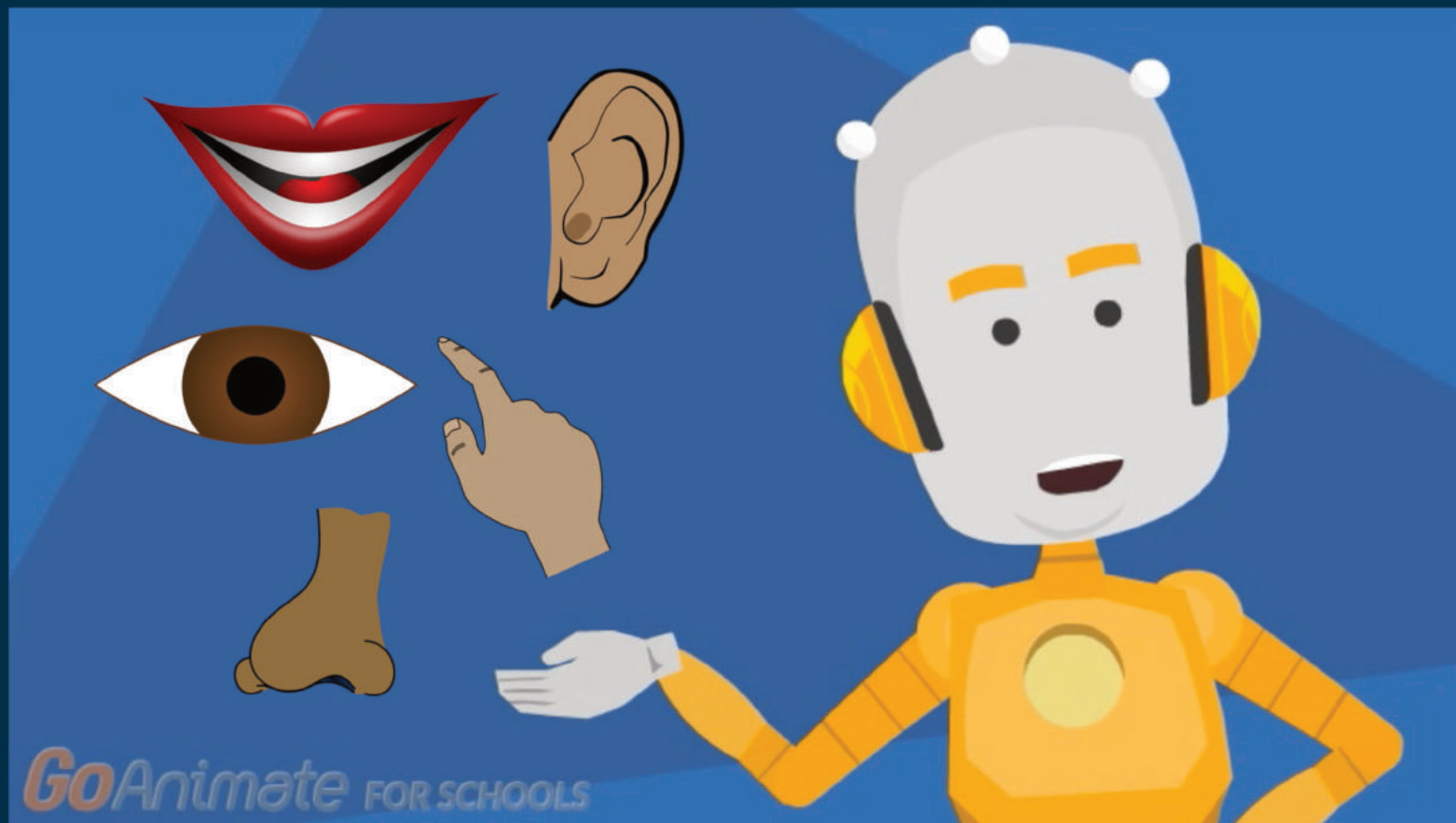
GoAnimate FOR SCHOOLS

Wamákħaşkanj kinj íŋš-eyá héčha yukħáŋpi,  
na watóhanjI šna unkítħawapi kinj sánm waš'ákapi naíŋš húŋħ sánm húŋkapišni.

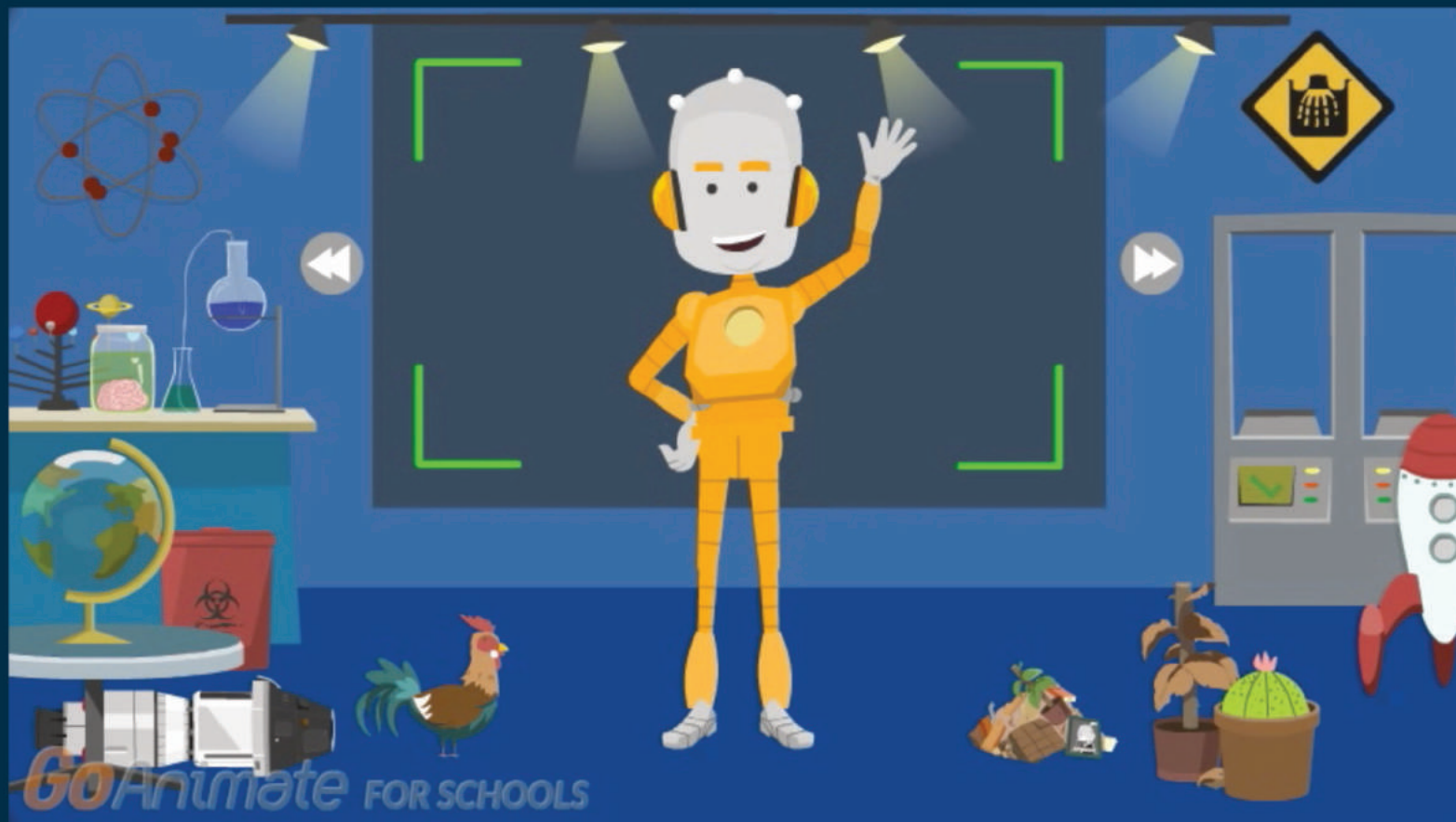


*GoAnimate* FOR SCHOOLS

Wóiwanyan̄ke wan̄ží kin̄ hé, wamákħaškaŋ óta ĥčiq un̄kisaŋm waómnap̄i okíhipi.



Áta khilí!  
Čha waná tóškhe takú niňáŋokšaŋ hiyéye kiŋ ayáblezapi he?



Hé iglúkčanpi na hehánl kúpi nahán akhé Nasúla Wóslolye  
eyápi wanží yunáyečhičhíyapi kte! Nasúla miyé yeló.