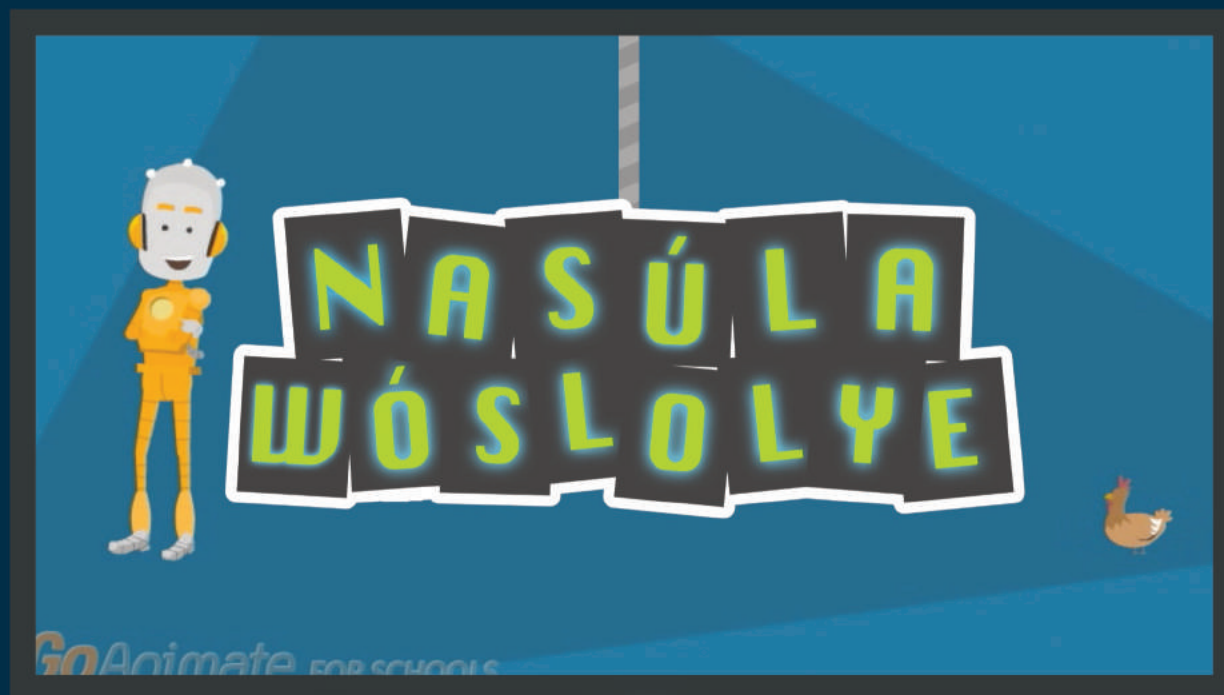


**NASÚLA  
WÓSLOLYE**

**Wičháňpi Kiŋ**

GoAnima



Wičháňpi Kiŋ

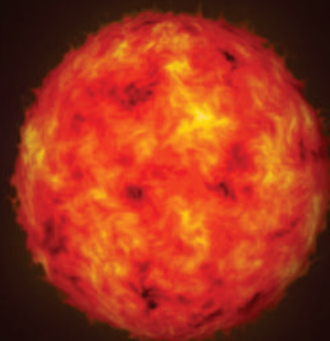


Háu! Mas'wíchaša hemácha na Nasúla emáçiyape ló.



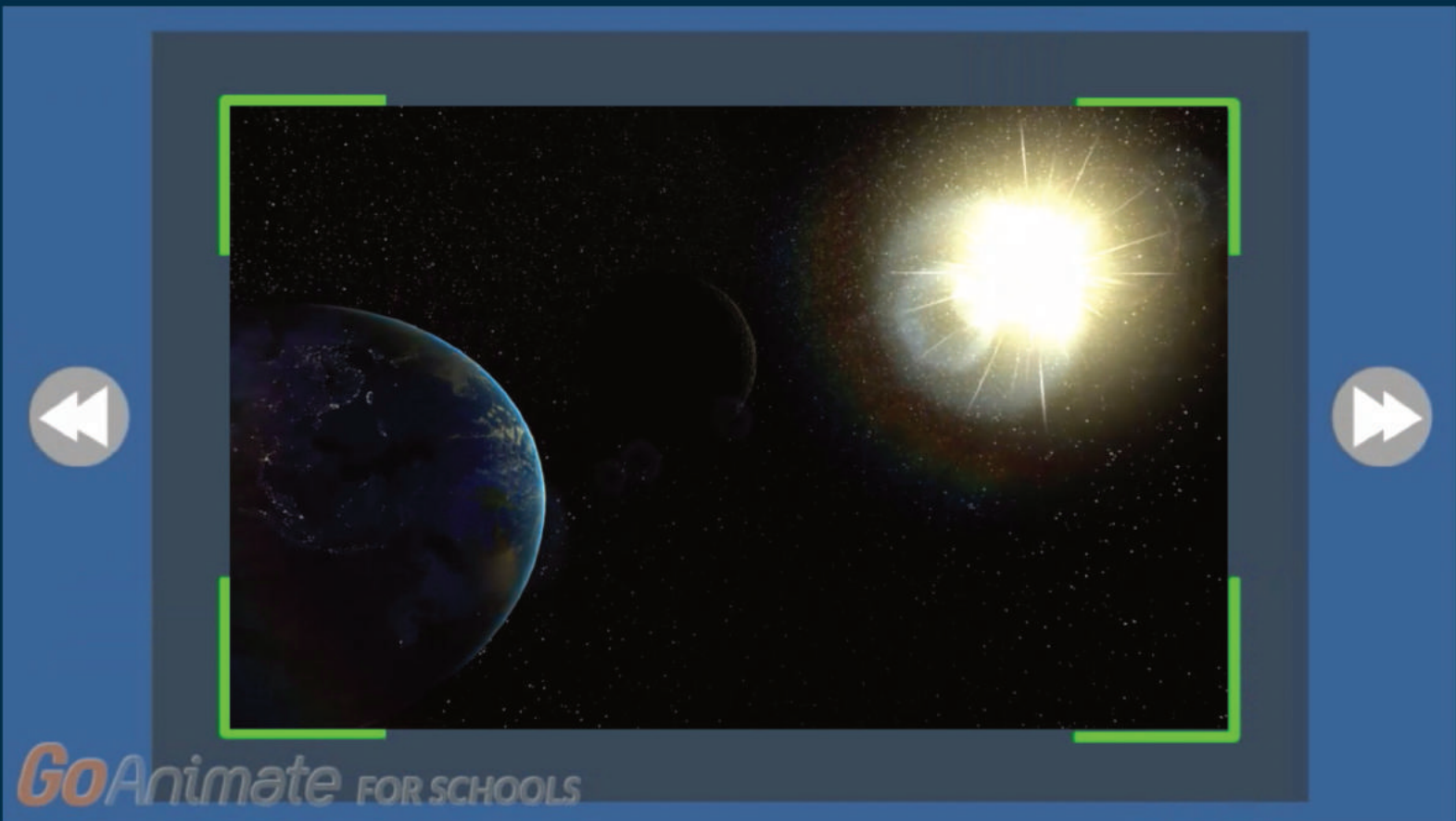
*GoAnimate* FOR SCHOOLS

Na wičháŋpi ečhíyatanŋaŋ takúku očhíčiyakapi wačhín.



*GoAnimate* FOR SCHOOLS

Wičháŋpi wanží gmigméla na tókhel okíhika thánka  
na makhá kiŋ letánhaŋ tókhel okíhika théhaŋl yaŋké.



Wičháŋpi waŋ kitánla uŋkíkhíyela yaŋké kiŋ hé Wí kiŋ é.



GoAnimate FOR SCHOOLS

Wíchaǰpi optáye thánka wan éł unǰ'únpi kiŋ  
léł wíchaǰpi khoktátheńika opáwiŋge tóna yukhé.



Wičháŋpi optáye thánka kin iyóhila él héčhuŋp-s'e wičháŋpi khóktátheŋika opáwiŋže tóna yukhé,  
na agná, wamákhognaka él wičháŋpi optáye thánka khóktátheŋika opáwiŋže tóna yukhé.



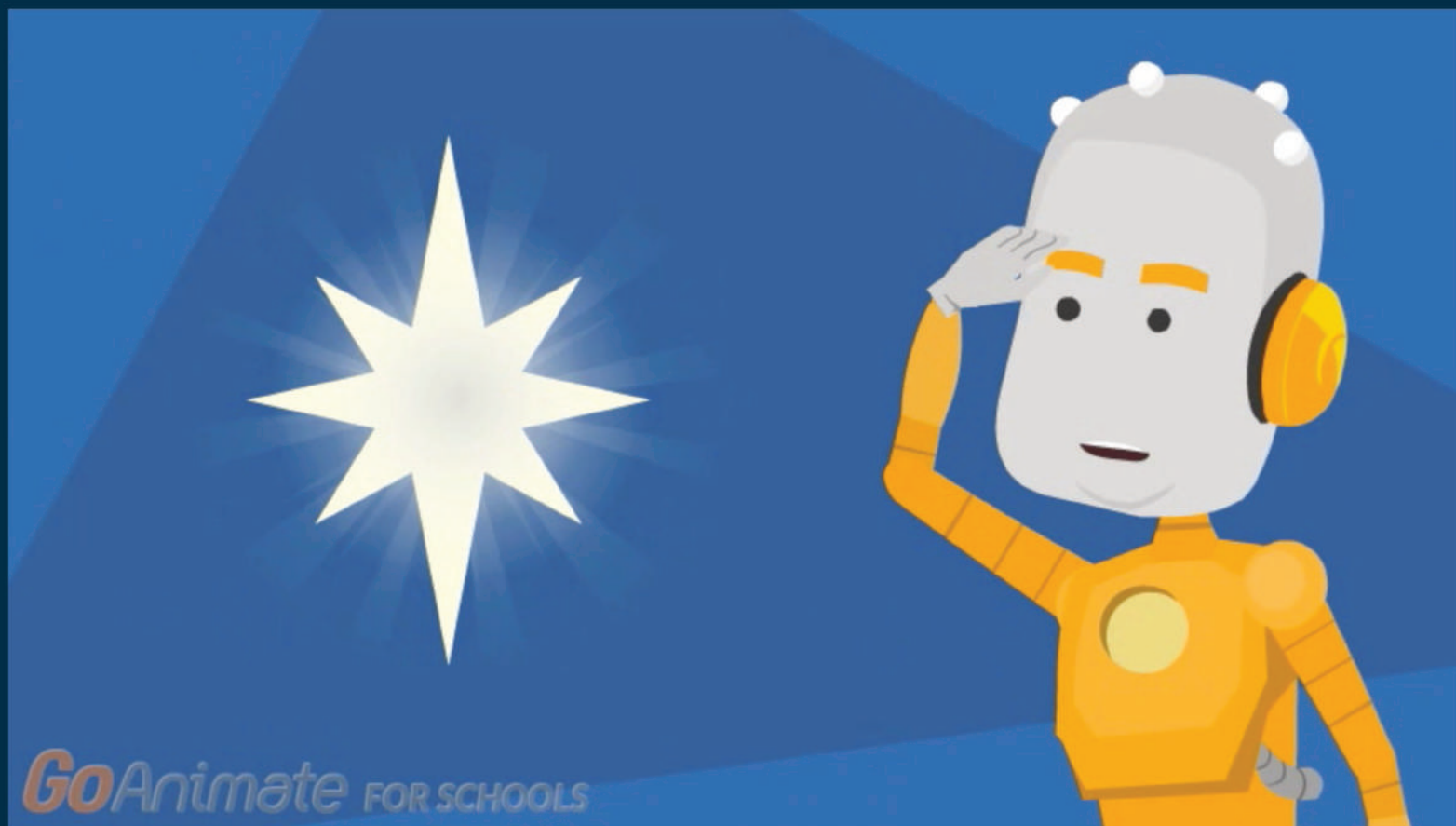


*GoAnimate* FOR SCHOOLS

Wičháŋpi kiŋhán eyášna ómakŋa kŋoktátheŋika waŋží hetáŋhaŋ,  
kŋoktátheŋika wikčémna heháŋyaŋ ilé.



Čha ečháš wičháňpi ečétkiya wanýáŋ nážij po!



Wičhápiň'a čháŋna áta khilí!



Hañhépi kin mañpíya waníče háñtañ iyúthapi na hehánl kúpi na akhé Nasúla Wóslolye eyápi húñh yunáyečhičiyapi kte ló.