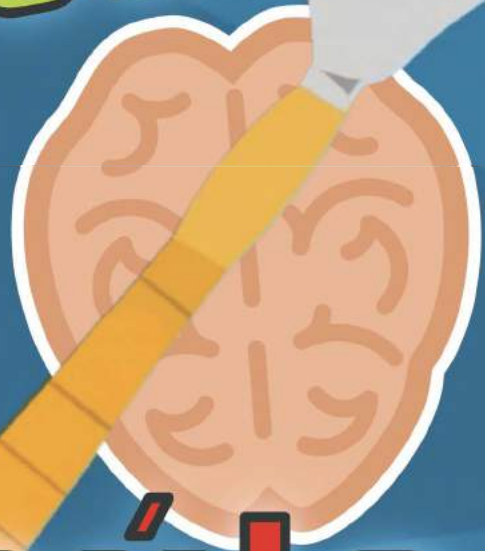


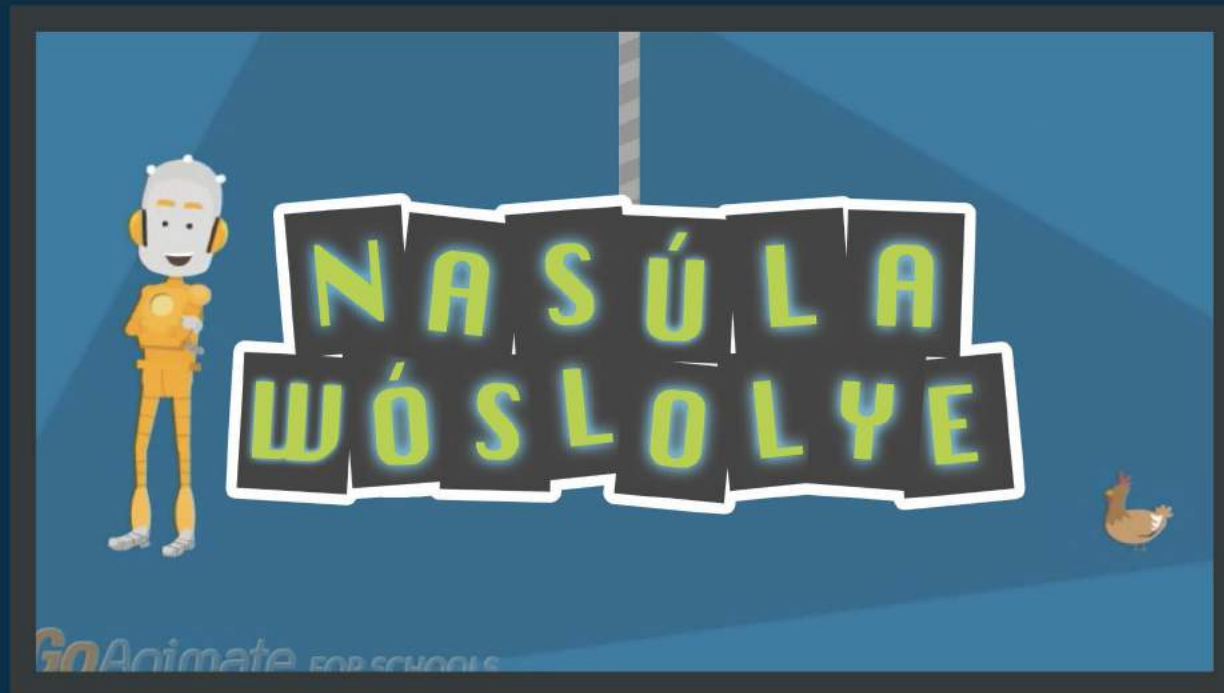
**NASÚLA  
WÓSLOLYE**



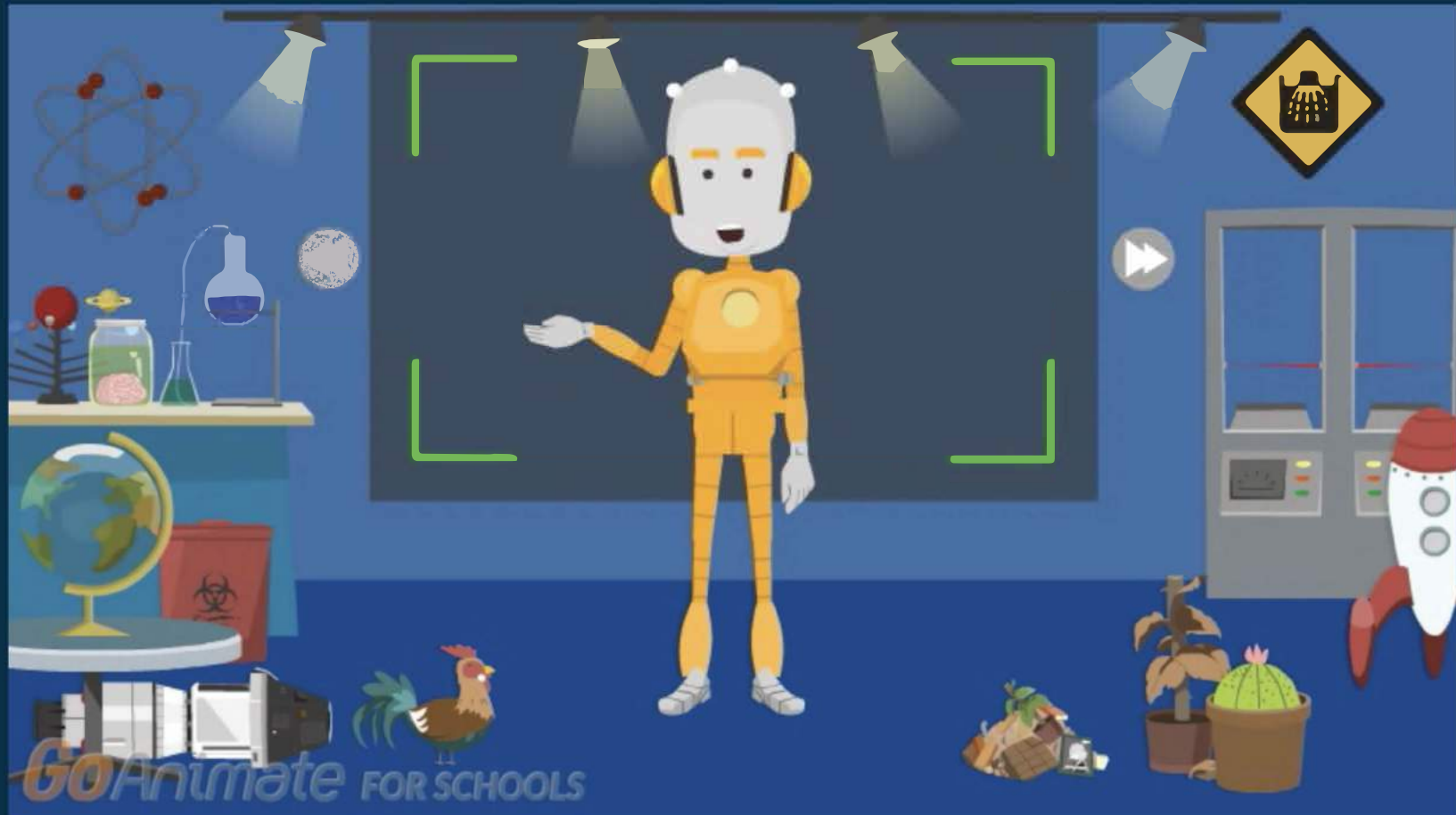
**Nasúla**

Go

FOR SCHOOLS



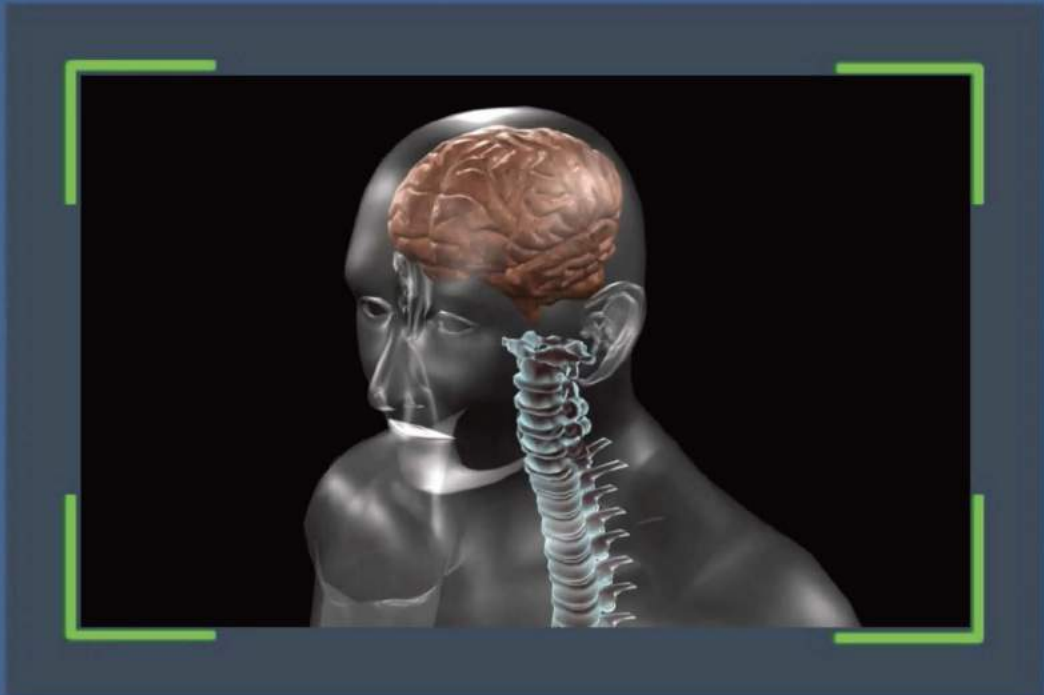
Nasúla



Háu! Mas'wíchaša hemácha na Nasúla emáçiyape ló.  
Na takúku nasúla kiŋ eçhíyatanhaŋ oçhíçiyakapi waçhíŋ yeló.

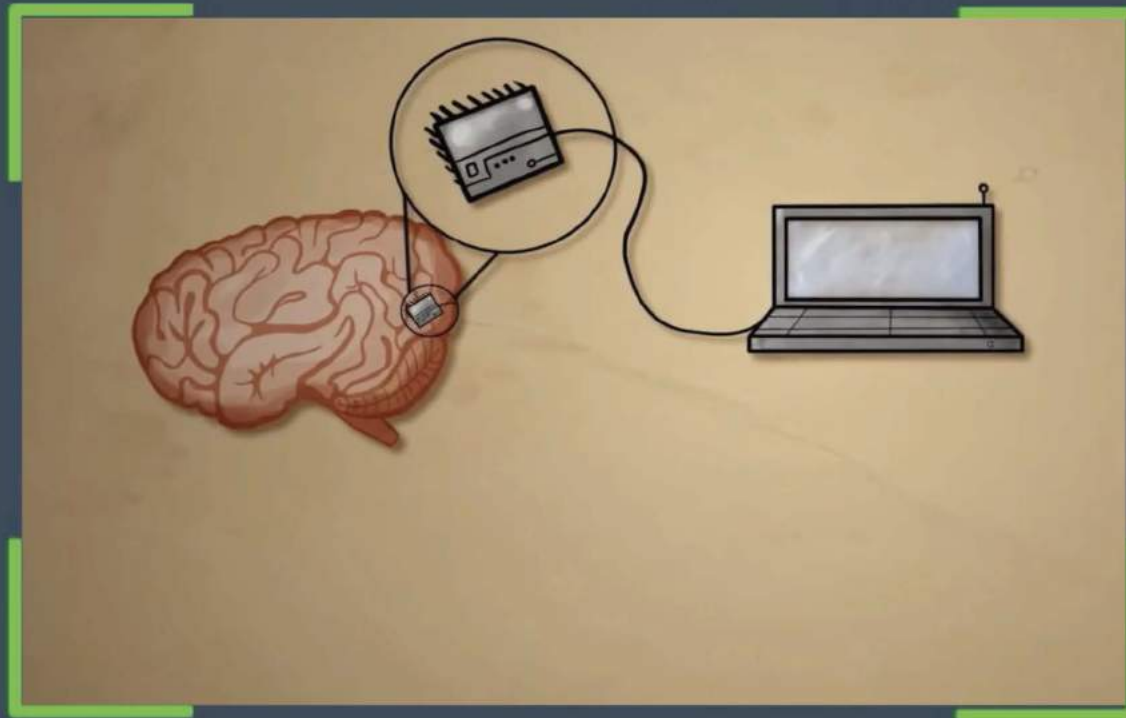


Hóh, miyé mič'íche šni!



*GoAnimate* FOR SCHOOLS

Wičhánasula kiŋ hé!



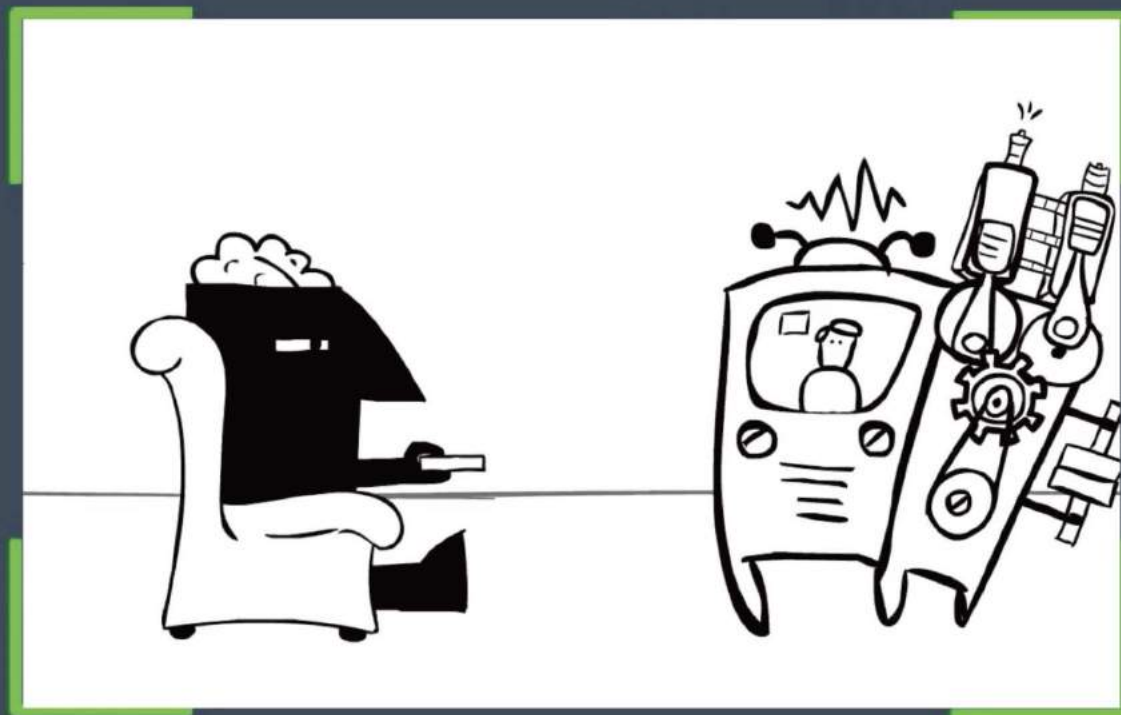
GoAnimate FOR SCHOOLS

Wičhánasula kinhán wóuŋspe omnáye waš'áka iyéčheča.



*GoAnimate* FOR SCHOOLS

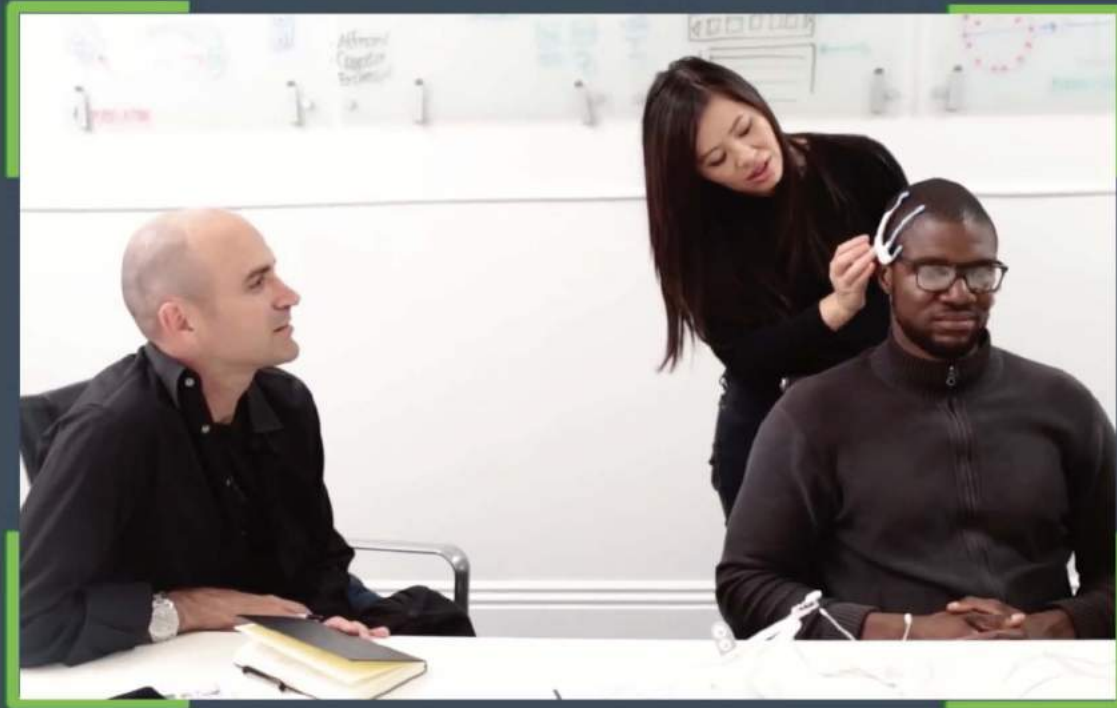
Uḡ waáunḡblezapi na šna unškánškanḡpi.



GoAnimate FOR SCHOOLS

Na uŋ wíunyuččaŋpi naíŋš waáwaunčhiŋpi naíŋš waúŋgluštaŋpi.





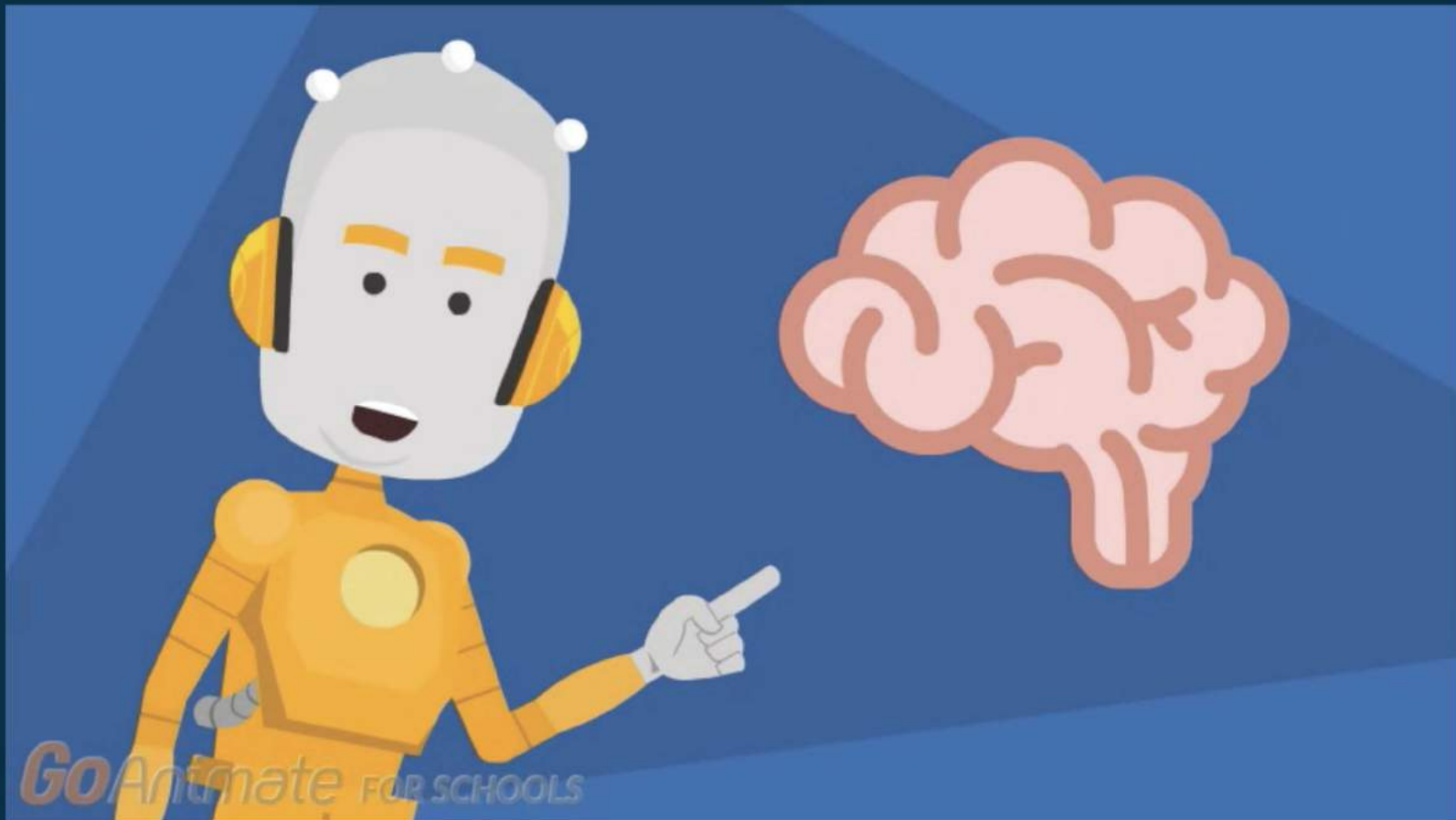
*Go*Animate FOR SCHOOLS

Na nakúη uη waúηkiksuyapi.



GoAnimate FOR SCHOOLS

Nakúṅ líla oókañniḥ šíče, čha wapásike kiṅ épi kayéš ožúla okáñniḡapi šni.



Hé khilí, inchéye? Hé iyúkčanpi yethó, nasúla kič'únyan!



Na echásh kúpi nahán akhé Nasúla Wóslolye eyápi wanjí  
yunáyečhičhiyapi kte! Nasúla miyé yeló.