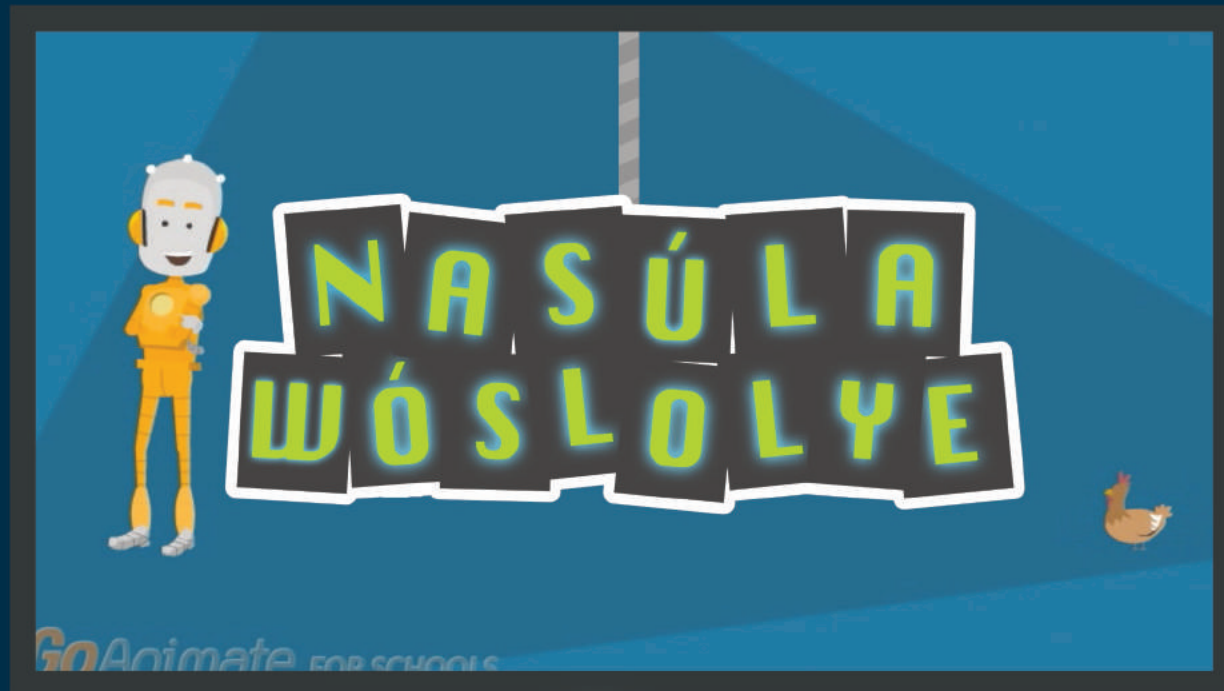


**NASÚLA  
WOSLOLYE**

**Wakhángli**

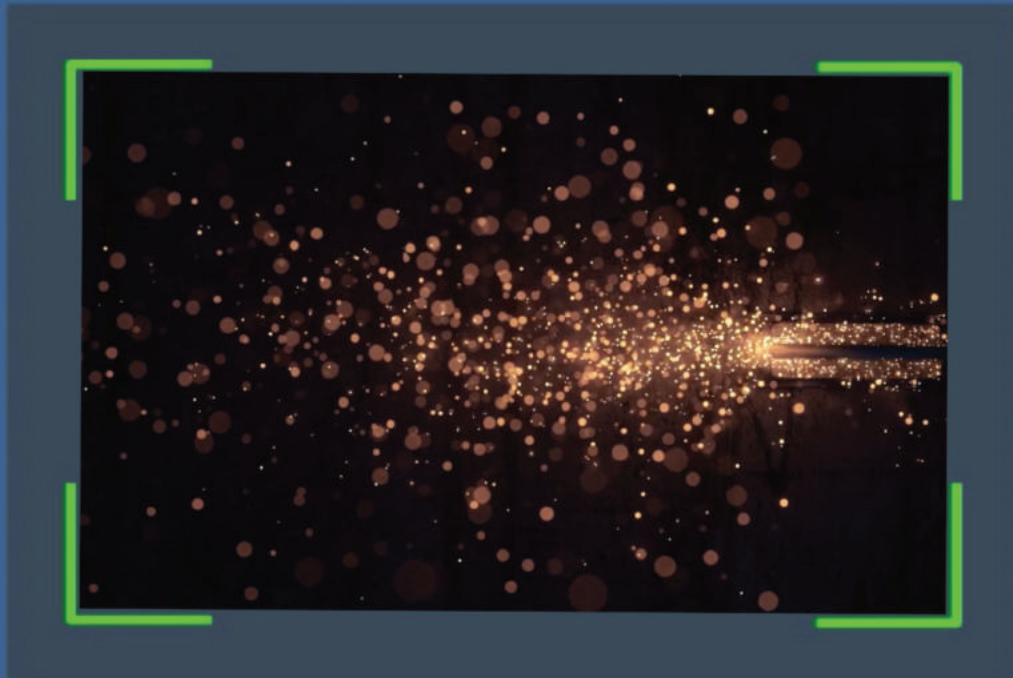




Wakǎngli

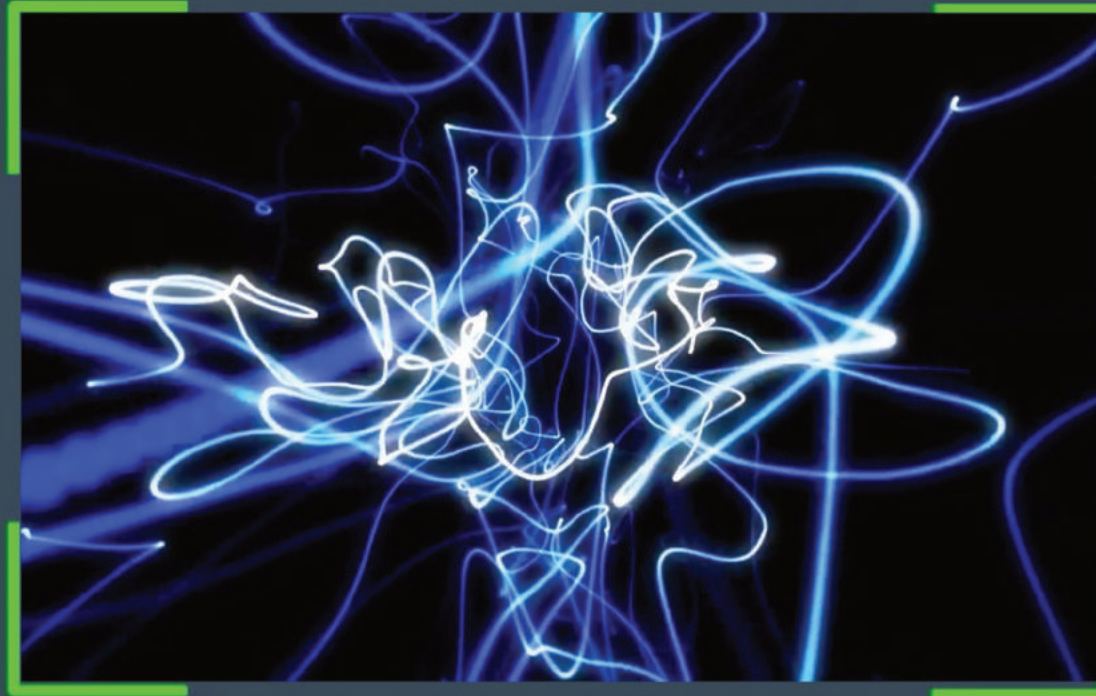


Háu! Mas'wíchaša hemácha na Nasúla emáçiyape ló.



*GoAnimate* FOR SCHOOLS

Na takúku wakhángli echiyatanhan ochičiyakapi wačhín yeló.



*GoAnimate* FOR SCHOOLS

Wakhángli kinhánj líla waš'áke.



GoAnimate FOR SCHOOLS

Lehánl ótakiya kaň-phíča.



GoAnimate FOR SCHOOLS

Wí, mní, čhańlí, tħaté kħó uŋ wakħáŋgli káġapi.



*GoAnimate* FOR SCHOOLS

Na iyótaņš wakíņyaņ tuņwáņpi kiņ hé.



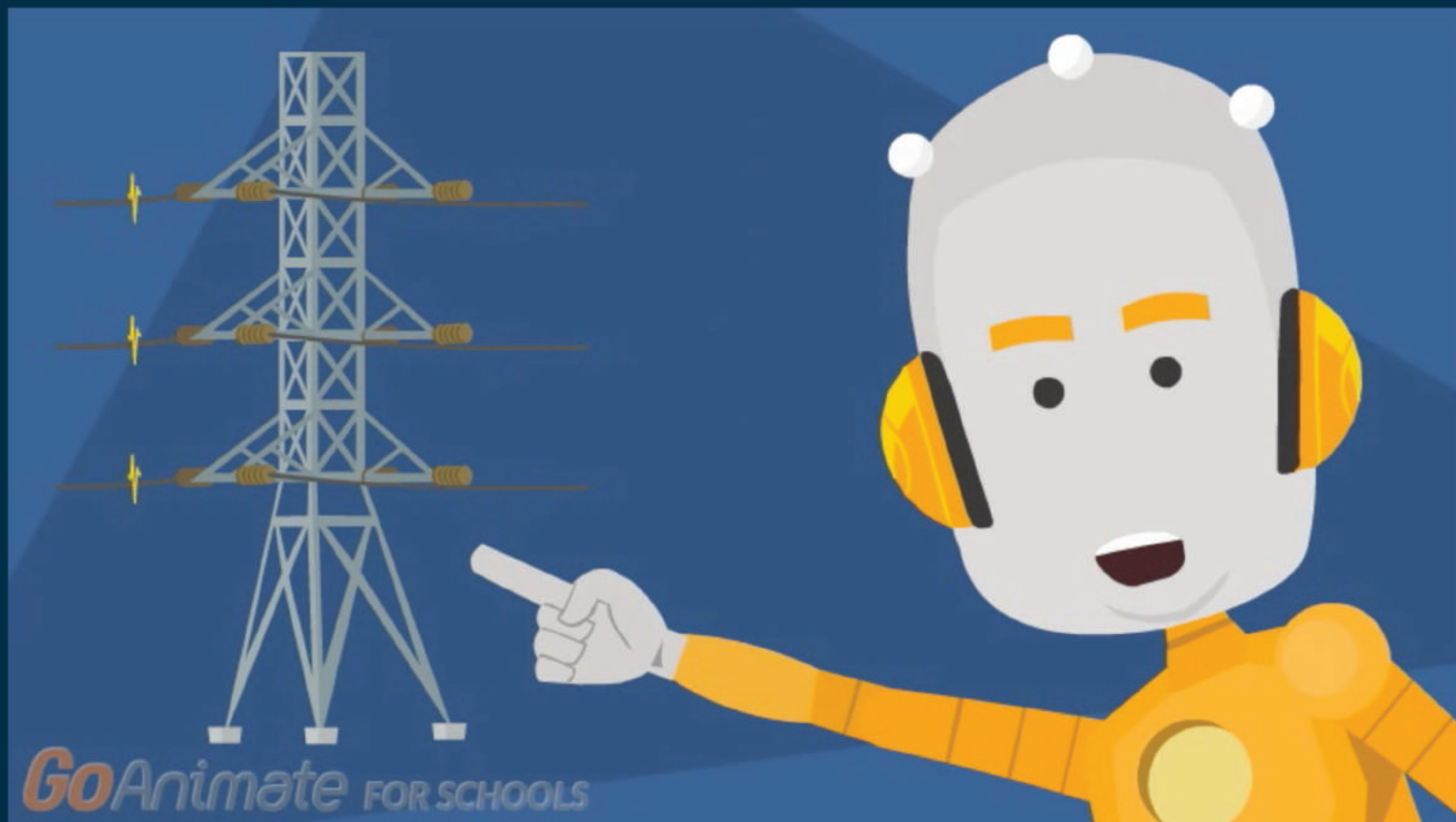


GoAnimate FOR SCHOOLS

Wakħángli uη šna wičítaškaŋškaŋ, wóuŋspe omnáye, omás'apħe,  
owášpaŋye, ožáŋžaŋ khó uηyúilepi na šna uηk'úŋpi!



*GoAnimate* FOR SCHOOLS



Áta khilí yeló!  
Níř, tóřkhe řna wakhángle núnpi he?



Hé kpasípi na hehánl kúpi nahán akhé Nasúla Wóslolye  
eyápi wanží yunáyečhičiyapi kte! Nasúla miyé yeló.